

MPN: LPP265

by Logon PATCHPANEL 1U CAT6a UNSHIELDED 24 PORTS - TOOLLESS

Model: Logon Professional LPP265

19" 24-port UTP Toolless Patch Panel, Black

Specifications

Type

Krone IDC

Electrical

Contact resistance: 20m Ohm

Insulation resistance: 500M Ohm @100 V DC

Withstand voltage: DC1000V AC 700V RMS 60Hz, IMIN

Cat6 permanent link: conform to ansi/tia/eia 568B. 2-10

Environmental

Storage: -40° / +70°

Operation: -10° / +60°

Mechanical

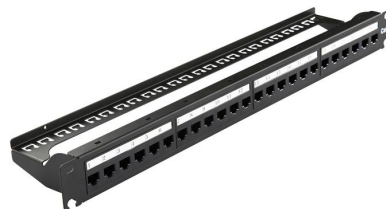
Metal material: cold rolled plate

IDC material: PC UL94V-0, accapt 22-26AWG solid wire

Terminal: phosphor bronze, tin gold 3U"

RJ45 contact life: 750 times min

IDN life: 250 times min



Specyfikacja

Package dimensions

Gross Weight (Package, kg)	0,65 kg
-----------------------------------	---------

Product dimensions

Net Weight (Product, kg)	0,65 kg
---------------------------------	---------

Vendor information

Brand Name	Lanview
-------------------	---------

Inne obrazy

