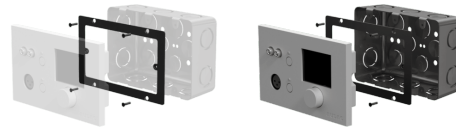
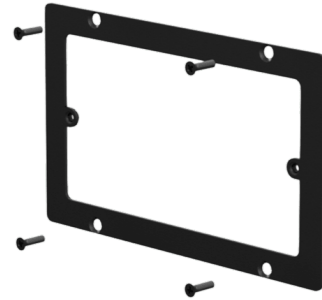


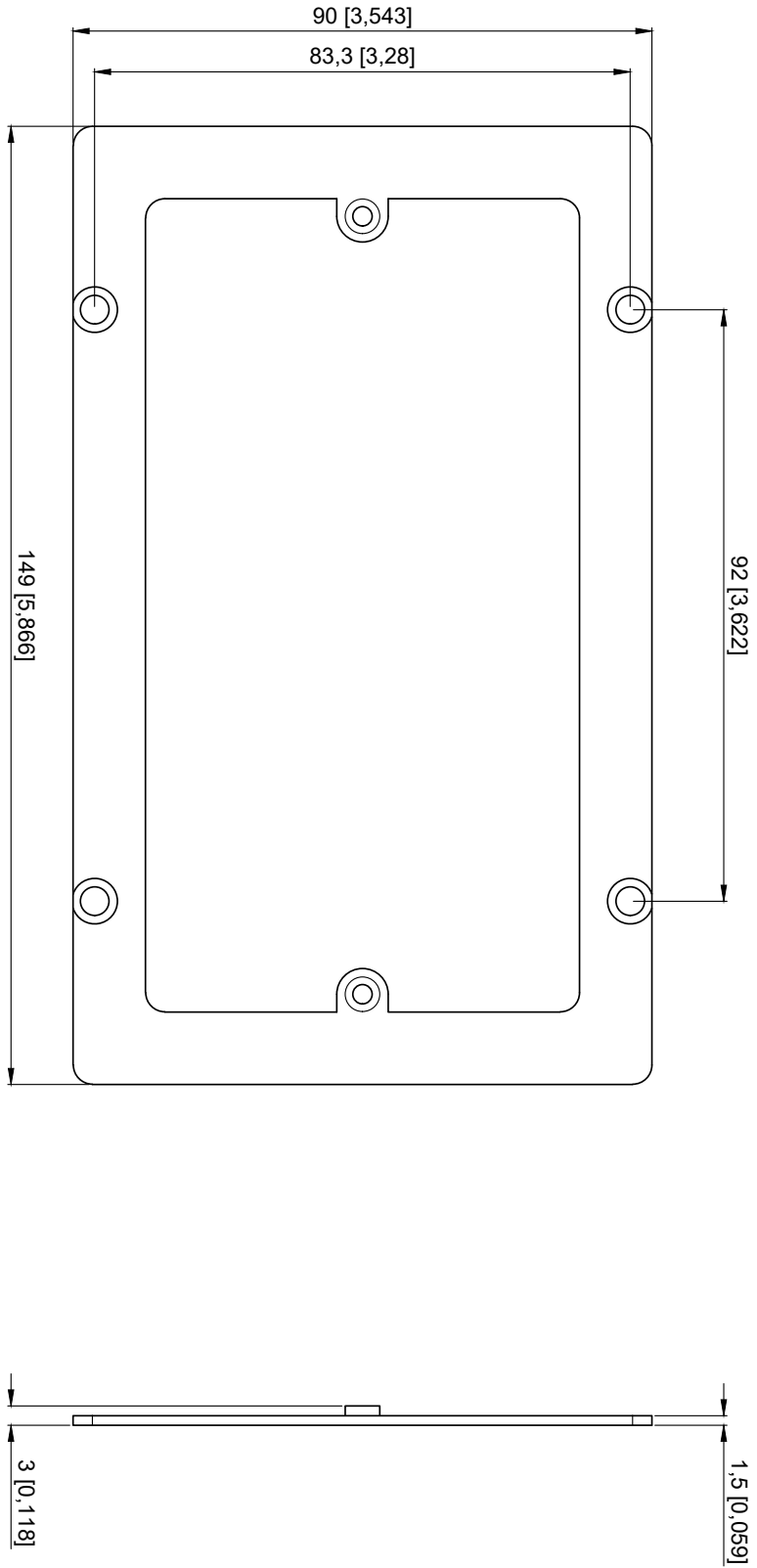
## Product information:

The WB50/AF is an optional adapter frame for installing the All-in-one wall panels (DW5066, MWX65 & WP523) in US standard 3-gang wall boxes. It is steel constructed and comes with all required installation fasteners.



## Product Features:

Dimensions		149 x 90 x 3 mm (W x H x D)
Accessories	Included	2 x M3 x 8 Pan head screw 4 x #6-32 x 1/2" Countersunk head Philips machine screw



- Included accessories:**
- 4x #6-32 x 1/2" Countersunk head Philips machine screw
  - 2x M3 x 8 Pan head screw



<b>WB50/AF</b>		<b>Product description</b>	
MM [INCH]	Weight	ADAPTER FRAME FOR WB50 PRODUCTS TO 3-GANG US STANDARD	
TBA	TBA	<b>Outer dimensions</b> (w x h x d)	<b>Unit height</b>
		149 x 90 x 3 mm	N/A
		5,866 x 3,543 x 0,118 "	