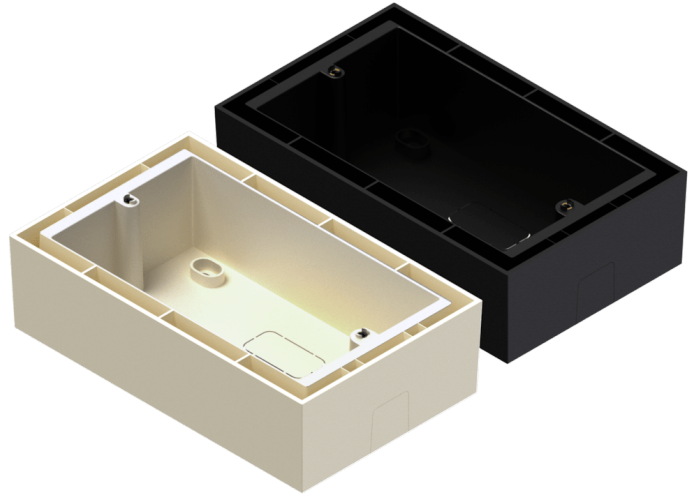


## Product information:

---

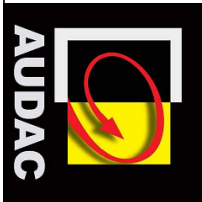
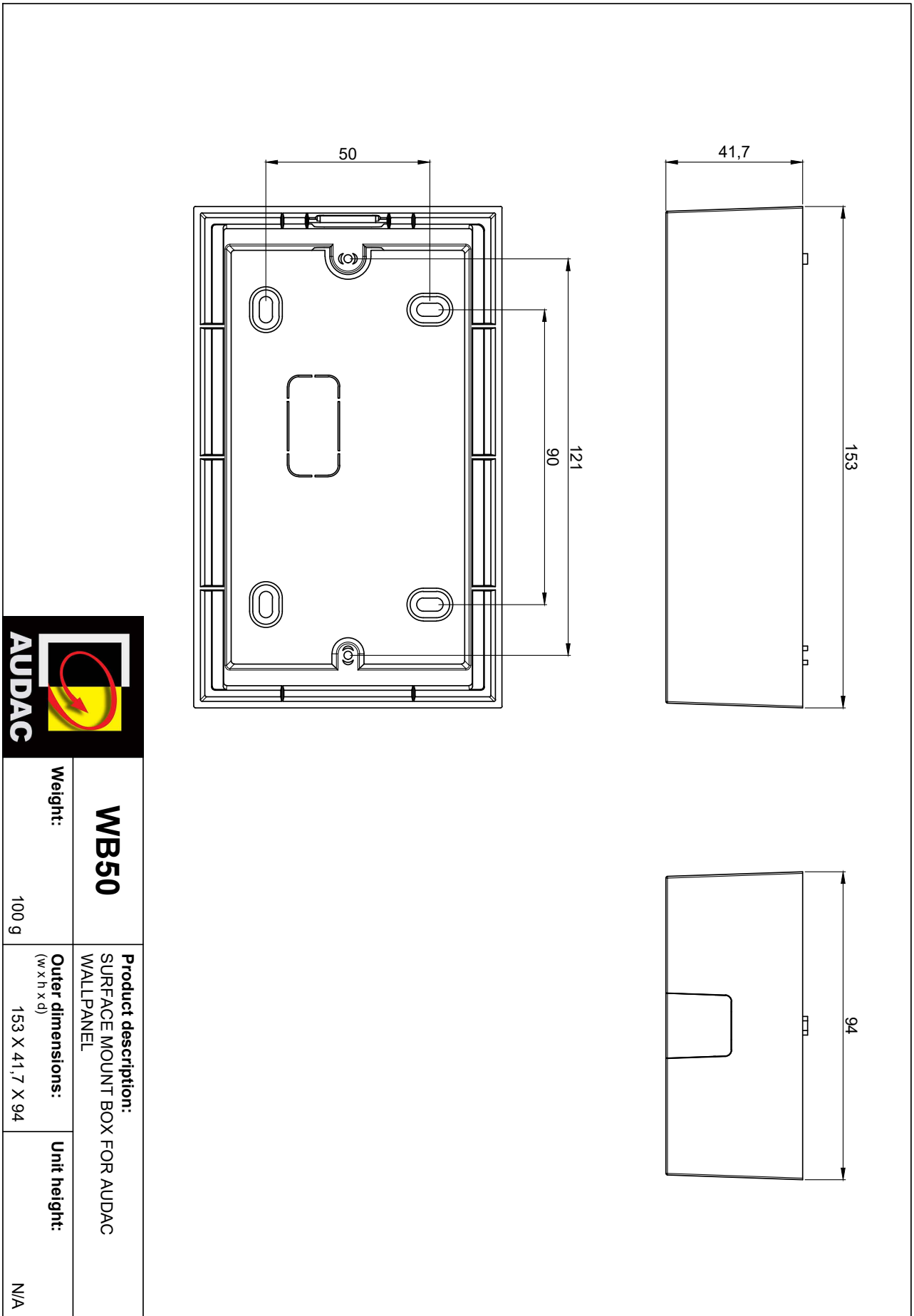
The WB50 are wall boxes for mounting AUDAC wall control panels such as the DW5066, MWX65 and WP523. Surface mounting boxes are also available in white (WB50/W) and black (WB50/B).



## Variants:

---

- WB50/B - Surface mount box for audac wallpanel - black
- WB50/W - Surface mount box for audac wallpanel - white



<p><b>WB50</b></p>	<p><b>Product description:</b> SURFACE MOUNT BOX FOR AUDAC WALLPANEL</p>	<p><b>Unit height:</b> N/A</p>
<p><b>Weight:</b> 100 g</p>	<p><b>Outer dimensions:</b> (w x h x d) 153 X 41,7 X 94</p>	