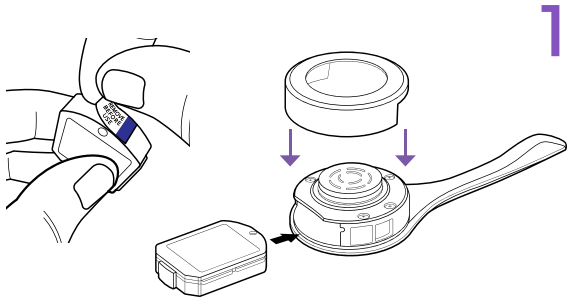


Manager's Guide

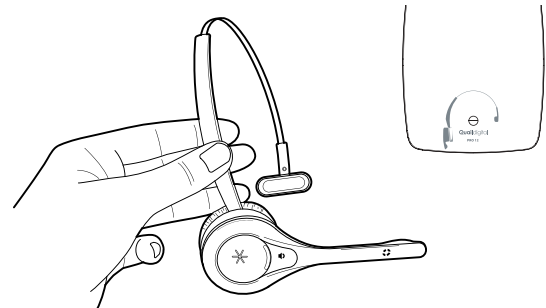
Registering new headsets & system reporting



1

Insert Battery into Headset

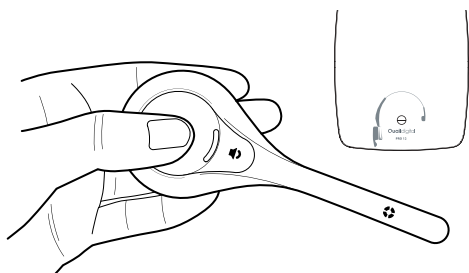
Peel sticker from battery and insert battery with gold contacts facing into headset, then clip on the battery cover.



2

Registering Headset

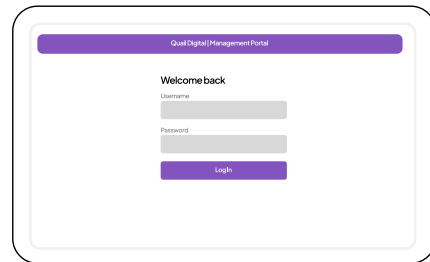
Register to base unit by holding headset within 2 metres. LED flashes every second, then pulses every 5 seconds.



3

Previously Registered Headset

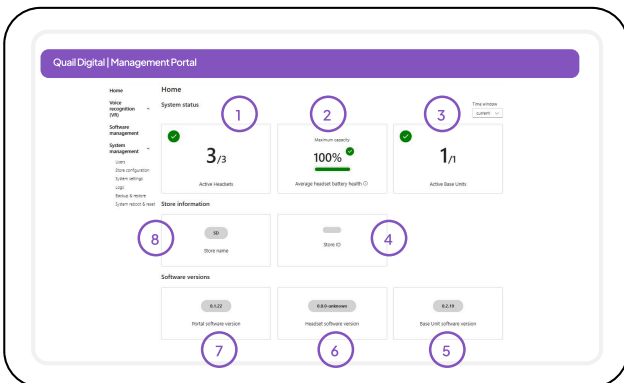
Press and hold PTT * button for 5 seconds, LED flashes every second. Then repeat step 2 above.



4

System Reporting

Connect laptop via ethernet to Pro12 Hub, in web browser enter www.pro12-portal.local for the above login and enter your details.



5

Portal Information

- 1 Number of active headsets
- 2 Average headset battery capacity
- 3 Number of active base units
- 4 Store ID
- 5 Base unit software version
- 6 Headset software version
- 7 Portal software version
- 8 Store name