

Grandstream Networks, Inc.

GXP1610/GXP1615

GXP1620/GXP1625

GXP1628/GXP1630

Small Business IP Phone

Administration Guide



Table of Content

DOCUMENT PURPOSE	6
GNU GPL INFORMATION	7
CHANGE LOG	8
Firmware Version 1.0.5.3	8
Firmware Version 1.0.4.152	8
Firmware Version 1.0.4.140	8
Firmware Version 1.0.4.132	9
Firmware Version 1.0.4.128	9
Firmware Version 1.0.4.106	10
Firmware Version 1.0.4.100	10
Firmware Version 1.0.4.88	10
Firmware Version 1.0.4.82	10
Firmware Version 1.0.4.65	11
Firmware Version 1.0.4.55	11
Firmware Version 1.0.4.46	11
Firmware Version 1.0.4.33	12
Firmware Version 1.0.4.22	12
Firmware Version 1.0.4.17	12
Firmware Version 1.0.4.6	12
Firmware Version 1.0.3.28	13
Firmware Version 1.0.3.6	13
Firmware Version 1.0.2.29	13
Firmware Version 1.0.2.26	13
Firmware Version 1.0.2.24	13
Firmware Version 1.0.2.22	13
Firmware Version 1.0.2.6	13
Firmware Version 1.0.2.4	13



Firmware Version 1.0.1.14	14
Firmware Version 1.0.1.10	14
GUI INTERFACE EXAMPLES	15
WELCOME	16
PRODUCT OVERVIEW	18
Feature Highlights (GXP1610/GXP1615/GXP1620/GXP1625/GXP1628)	18
Feature Highlights (GXP1630)	18
GXP1610/GXP1615/GXP1620/GXP1625/GXP1628/GXP1630 Technical Specifications	19
CONFIGURATION GUIDE	25
Configuration via Keypad	25
Configuration via Web Browser	31
Definitions	32
<i>Status Page Definitions</i>	32
<i>Account Page Definitions</i>	34
<i>Settings Page Definitions</i>	50
<i>Network Page Definitions</i>	67
<i>Maintenance Page Definitions</i>	72
<i>Contacts Page Definitions</i>	82
NAT Settings	85
Public Mode	85
Lock Settings on the Phone	86
DHCP VLAN	86
Ability to Configure Record Button	87
Editing Contacts and Click-To-Dial	88
Saving the Configuration Changes	89
Action URL	90
Rebooting from Remote Locations	96
UPGRADING AND PROVISIONING	97



Upgrade via Keypad Menu	97
Upgrade via Web GUI.....	97
No Local TFTP/HTTP Servers	98
Configuration File Download.....	98
Certificates and Keys Provisioning	100
RESTORE FACTORY DEFAULT SETTINGS.....	101
Restore to Factory Default via the LCD Menu.....	101
Restore to Factory Default via the Web GUI	101
EXPERIENCING THE GXP1610/GXP1615/GXP1620/GXP1625/GXP1628/GXP1630	
.....	102



Table of Tables

Table 1: GXP1610/GXP1615 Technical Specifications	19
Table 2: GXP1620/GXP1625 Technical Specifications	20
Table 3: GXP1628 Technical Specifications.....	22
Table 4: GXP1630 Technical Specifications.....	23
Table 5: GXP1610/GXP1615/GXP1620/GXP1625/GXP1628/GXP1630 Menu Options	25
Table 6: User / Admin Levels Information	31
Table 7: Status Page Definitions	32
Table 8: Account Page Definitions	34
Table 9: Settings Page Definitions	50
Table 10: Network Page Definitions	67
Table 11: Maintenance Page Definitions	72
Table 12: Contacts Page Definitions	82
Table 13: Action URL - Supported Events.....	93
Table 14: Action URL - Supported Dynamic Variables.....	94
Table 15: Action URL Parameters P-values.....	95



Table of Figures

Figure 1: Keypad Menu Flow	30
Figure 2: Change Password on first boot.....	32
Figure 3: Lock/Unlock Configuration via Keypad Menu	86
Figure 4: Enable DHCP VLAN	87
Figure 5: DHCP Option 132 & 133.....	87
Figure 6: Call Recording Feature Codes	88
Figure 7: Web GUI→Phonebook→Contacts.....	89
Figure 8: Click-to-Dial.....	89
Figure 9: Action URL Settings Page.....	92
Figure 10: Action URL Packet	95
Figure 11: Rebooting the phone via web GUI	96
Figure 12: Certificates Files Download	100



DOCUMENT PURPOSE

This document describes how to configure GXP1610/GXP1615/GXP1620/GXP1625/GXP1628/GXP1630 features via phone's LCD menu and Web GUI menu. The intended audiences of this document are phone administrators.

To learn the basic functions of GXP1610/GXP1615/GXP1620/GXP1625/GXP1628/GXP1630, please visit <http://www.grandstream.com/support> to download the latest "GXP16XX series User Guide".



GNU GPL INFORMATION

GXP1610/GXP1615/GXP1620/GXP1625/GXP1628/GXP1630 firmware contains third-party software licensed under the GNU General Public License (GPL). Grandstream uses software under the specific terms of the GPL. Please see the GNU General Public License (GPL) for the exact terms and conditions of the license.

Grandstream GNU GPL related source code can be downloaded from Grandstream web site from:
<http://www.grandstream.com/support/faq/gnu-general-public-license/gnu-gpl-information-download>.



CHANGE LOG

This section documents significant changes from previous versions of user manuals for GXP1610/GXP1615/GXP1620/GXP1625/GXP1628/GXP1630. Only major new features or major document updates are listed here.

Firmware Version 1.0.5.3

- Added support of Beirut Time zone. [Time Zone]
- Added Support of Central Africa Time zone “CAT”. [Time Zone]
- Added ability to choose minimum TLS version. [Minimum TLS Version]
- Added ability to choose maximum TLS version. [Maximum TLS Version]
- Added ability to Enable/Disable weak ciphers suites. [Enable/Disable Weak Ciphers]

Firmware Version 1.0.4.152

- Added GNU GPL License information display on LCD and Web UI [GNU GPL License]
- Added Ability to scroll long names on the screen in order to display the full name. [Caller ID Display Mode]
- Added Support to input username and password via keypad for Broadsoft's directories. [Login Credentials]
- Added Support of “Provision” mode for VPK/MPK to trigger provisioning [Provision]
- Added Ability to allow @ character in SIP user ID [SIP User ID]
- Added Support of Auth Header on Initial REGISTER [Add Auth Header On Initial REGISTER]
- Add Support to include DHCP Option 12 into DHCP Inform message [Host name (Option 12)]
- Increased SIP Certificate length limitation from 2048 characters to 8192 [SIP TLS Certificate]

Firmware Version 1.0.4.140

- Added Support for Emergency call under functional lock [functional lock]
- Added Support for callee ID display [callee id display]
- Added ability to create Custom Call Screen Softkey Layout [Custom Call Screen Softkey Layout]
- Added ability to customize the feature code [Feature Codes]
- Added option to specify which certificate to trust [load ca certificates]
- Added show both call session timer and hold duration timer on LCD during call hold. [Show on Hold Duration]
- Added more custom ringtone choices. [Default Ringtone]
- Added option to disable # key from acting as redial key. [Use Pound (#) For Redial]
- Added support for variable \$active_url in Action URL. [action url]
- Added upload button to upload SIP TLS Private Key. [SIP TLS Certificate] [SIP TLS PRIVATE KEY]
- Added option to hide reject softkey on ringing state [Hide/Disable reject key]



- Added option "Disable Busy Tone on Remote Disconnect" [disable busy tone]
- Added option to specify DNS SRV query frequency. [DNS Cache Refresh Time]
- Added ability to open door in idle stage for GDS integration. [GDS OpenDoor]
- Added ability to use special characters on 802.1X MD5 password. [MD5 Password]
- Added option to choose CID display behavior (static or dynamic). [Caller ID Display Mode]
- Added option to enable/disable Diversion info display. [Enable Diversion Information Display]
- Changed default value for "Enable CDP" to be "Enabled" instead of "Disabled". [Enable CDP]
- Added options to disable hook switch. [disable hook switch]

Firmware Version 1.0.4.132

- Increased phonebook limit to 1000 entries. [PRODUCT OVERVIEW]

Firmware Version 1.0.4.128

- Added Support for SNMPv3 [SNMP]
- Added FTP/FTPS support for provisioning and firmware upgrade [Config Upgrade Via] [Firmware Upgrade Via] [UPGRADING AND PROVISIONING]
- Added support to configure device with custom certificate signed by custom CA certificate [custom CA certificate]
- Added support for local packet capture. [Packet Capture]
- Added support for Group Listening with Speaker [Group Listening with Speaker]
- Added support for more Action URL notification [Action URL]
- Added support for XML Application [XML Application]
- Added support for RTCP-XR. [GXP1610/GXP1615/GXP1620/GXP1625/GXP1628/GXP1630 Technical Specifications]
- Added Broadsoft call park notification feature [Broadsoft Call Park]
- Added Codec Negotiation Priority feature [Codec Negotiation Priority]
- Added support for "tftp://" in DHCP Option 66 [Allow DHCP Option 43 and Option 66 to Override Server]
- Added support to customize idle time to logout the web access [Web Session Timeout]
- Added support to customize number of failed attempts to access web GUI [Web Access Attempt Limit]
- Added support for BLF call pick-up to go through dial plan [Bypass Dial Plan]
- Added support of on hook dialing with Live DialPad [Enable Live DialPad]
- Added support for CID and Image from SIP NOTIFY [Caller ID Display]
- Added support to randomize TR069 Inform Interval [Randomized TR069 Startup]
- Added support to configure off-hook auto dial delay [Off-hook Auto Dial Delay]
- Added support for auto answer delay [Auto Answer Delay]
- Added more fields for Distinctive Ring Tone. [Match Incoming Caller ID]
- Add support to enable or disable Acoustic Echo Cancellation. [Enable Enhanced Acoustic Echo Cancellation]



- Add support to download certificate files during provisioning. [Certificates and Keys Provisioning]
- Added support of on hold reminder tone [On Hold Reminder Tone]
- Updated phonebook string in LCD and Web UI to “Contacts” [Contacts] [Contacts Page Definitions]

Firmware Version 1.0.4.106

- Enhanced Syslog to run on other ports instead of default port. [Syslog Server]
- Enhanced Intercom options (including Intercom Mute, Intercom Tone). [Intercom]
- Added auto provision starts when certain P-values are changed. [P-values that trigger Auto-Provision]
- Added attempt to download config files. [Attempt to download Config File again]
- Added “Provision” button to trigger Provision Requests. [Provision]

Firmware Version 1.0.4.100

- Added “Import Group Method” to append or replace existing groups. [Import Group Method]
- Added option to validate server certificates with our trusted list for TLS connections. [Validate server certificates]
- Added option to enable or disable user web access. [Enable User Web Access]
- Added support for Cisco Discovery Protocol. [Enable CDP]
- Added option to enable CSTA Control. [CSTA Control]
- Added option to test strength of password. [Test Password Strength]
- Added option to configure the timeout of the active backlight. [Active Backlight Timeout]
- Added option to specify the transfer mode via VPK. [Transfer Mode via MPK].
- Added support for transfer when using a non-transfer MPK. [Enable Transfer via non-Transfer MPK]
- Added support for SBC. [Use SBC]
- Added option to include the MAC address on the SIP message header. [Use MAC Header]
- Force admin to change default password upon first time login. [Password on first boot]
- Added support for HTTPS server based on TLSv1.2.
- Added monitored call park MPK option and supported to be provisioned by 3CX.
- Added support to automatically log in web UI from server interface for 3CX.
- Added “Let's Encrypt” Validation for 3CX.

Firmware Version 1.0.4.88

- No major changes.

Firmware Version 1.0.4.82

- Added “Account Display” option to configure SIP account display label on LCD. [Account Display]
- Added “Disable VM/MSG Power Light Flash” option to enable/disable voicemail/message indication. [Enable / Disable VM/MSG Power Light Flash]
- Added web UI option to upload SSH public key for SSH access. [SSH Public Key]



- Added “Ring for Call Waiting” option to enable/disable ringing the speaker phone on call waiting. [Ring For Call Waiting]
- Added call forwarding configuration on web UI. [Call Forward]
- Added support for static/dynamic auto-attended transfer. [Attended Transfer Mode]
- Added support for BLF server. [BLF Server]
- Added automatic redial support. [Automatic Redial]
- Added blacklist/whitelist support in phonebook. [Blacklist, Whitelist]
- Added option to disable hook switch. [Disable Hook Switch]
- Added notification tone value configuration [Notification tone volume]
- Added SNMP support. [SNMP]
- Added support for Genesys Agent Login/Logout and status update. [Enable User Presence Subscription]
- Improved slow performance issue after phone is used for some time.
- Added Let’s Encrypt Root CA to Trusted CA.
- Increased max length of dial plan from 512 to 1024 characters.

Firmware Version 1.0.4.65

- Added support for Syslog over TLS [Syslog Protocol]
- Added support of Provisioning "Trusted CA Certificates" [Trusted CA certificates]
- Added option to select the method for caller information display [Remote Info Display]
- Added support to enable/disable IPv4/IPv6 [Internet Protocol]
- GDS37XX OpenDoor Key support integration [Grandstream Door System]

Firmware Version 1.0.4.55

- Allow certificate upload for OpenVPN. [Open VPN® Settings]
- Added option to sort Broadsoft phonebook by Last/First name. [Sort Phonebook]
- Added ability to lock the phone ringing volume. [Lock Speaker Volume]
- Added ability to customize the domain name on the XSI request. [XSI Actions Path]
- Changed OpenVPN to OpenVPN® for web page and added the trademark. [Open VPN® Settings]
- Added HTTP/HTTPS Authentication for phonebook XML file download. [HTTP/HTTPS User Name; HTTP/HTTPS Password]
- Updated syslog message to include MAC address and firmware version. [Syslog]

Firmware Version 1.0.4.46

- Added support for concurrent G.729 calls.
- Added option to enable/disable web UI access. [Web Access Mode]
- Added option to hide the password on the display after dialing a specific prefix. [Hide Dialing Password]
- Added LDAPS support. [LDAP protocol]



- Added support for certificate DN validation for LDAPS.
- Added option to remove SIP error on LCD. [Show SIP Error Response]

Firmware Version 1.0.4.33

- Added support of intercom button to send multicast paging. [Intercom Key Mode]
- Added option to disable custom SIP header. [Custom SIP Headers]
- Added support to send SIP log without enabling debug level. [Send SIP Log]
- Added option to bypass firmware upgrade confirmation. [Firmware Upgrade Confirmation]

Firmware Version 1.0.4.22

- Added ability to lock settings on phone. [Maintenance → Security] [Lock Settings on the Phone]
- Added support for DHCP option 132 and 133 tunneled through DHCP option 43. [DHCP VLAN]
- Added support for DHCP option 132 for (802.1Q VLAN ID) and 133 (QoS priority level).
- Added ability to adjust ringtone level from web GUI. [Default Ringtone]
- Added support for separated QoS setting for SIP and RTP.
- Added configurable web access port. [Maintenance → Security]
- Added ability to configure record button. [Ability to Configure Record Button]

Firmware Version 1.0.4.17

- Added ability to set forward on busy and on no answer from the LCD.
- Added ability to display more characters for account name on LCD display. [Wide Idle Screen View]
- Added option for predictive dial feature. [Predictive Dialing Feature]
- Added option to adjust the Maximum Transmission Unit (MTU) of IP packets. [Maximum Transmission Unit (MTU)]
- Spited register and subscription expiration settings. [Subscribe Expiration]
- Added ability to hide web access mode and disable SSH from LCD menu under constraint mode. [Configuration via Keypad Menu]
- Add support for Latvian Language.
- Update Polish language.

Firmware Version 1.0.4.6

- Added ability to customize the system softkey. [Softkeys]
- Added ability to hide system softkey on main screen.
- Added support of configurable User Agent field. [User-Agent Prefix]



Firmware Version 1.0.3.28

- Added option to disable recovery on blind transfer. [Disable Recovery on Blind Transfer]
- Added call-pickup barge-in code. [Call Pickup Barge-in Code]
- Added options to hide remote user ID based on both call type and length. [Hide Remote User ID]
- Added option to set Broadsoft's contacts download interval. [XSI]

Firmware Version 1.0.3.6

- Added G723.1 and iLBC codecs support. [Preferred Vocoder]
- Added Event Notification. [Maintenance]
- Added options to specify Broadsoft XSI authentication method. [XSI]

Firmware Version 1.0.2.29

- Added DHCP option 150/160 support. [Additional Override DHCP option]

Firmware Version 1.0.2.26

- Added ability to filter characters from dial numbers.

Firmware Version 1.0.2.24

- Web logo and style changed.

Firmware Version 1.0.2.22

- Added DHCP Option 125 support.

Firmware Version 1.0.2.6

- Enabled/Disabled Broadsoft Call Park subscribe. [Broadsoft Call Park]
- Separate Firmware/Config's upgrade via, HTTP/HTTPS username, and HTTP/HTTPS password. [Maintenance → Upgrade and Provisioning]

Firmware Version 1.0.2.4

- Ignore Alert-Info Header. [Ignore Alert-Info Header]
- Validate Certification Chain. [Validate Certification Chain]
- Bypass Dial Plan through Call History and Directories. [Bypass Dial Plan through Call History and Directories]



Firmware Version 1.0.1.14

- Backup Outbound Proxy. [Backup Outbound Proxy]
- Enable OPTIONS Keep Alive. [Enable OPTIONS Keep Alive]
- OPTIONS Keep Alive Interval. [OPTIONS Keep Alive Interval]
- OPTIONS Keep Alive Max Lost. [OPTIONS Keep Alive Max Lost]

Firmware Version 1.0.1.10

This is the initial version.



GUI INTERFACE EXAMPLES

http://www.grandstream.com/sites/default/files/Resources/gxp16xx_web_gui.zip

1. Screenshot of Login Page.
2. Screenshots of Status Pages.
3. Screenshots of Accounts Pages.
4. Screenshots of Settings Pages.
5. Screenshots of Network Pages.
6. Screenshots of Maintenance Pages.
7. Screenshots of Contacts Pages.



WELCOME

Thank you for purchasing Grandstream Small Business IP phone GXP1610/GXP1615/GXP1620/GXP1625/GXP1628/GXP1630. GXP16xx series is a next generation small-to-medium business IP phone: the GXP1620/GXP1625 features 2 lines with 2 SIP accounts, superior HD wideband audio, 132 x 48 backlit graphical LCD; the GXP1610/GXP1615 supports 2 lines with 1 SIP account, 132 x 48 graphical LCD; GXP1630 supports 3 lines with 3 SIP accounts, 132x64 backlit graphical LCD. The GXP1610/GXP1615/GXP1620/GXP1625/GXP1628/GXP1630 delivers rich features of 3 XML programmable context-sensitive softkeys, dual network ports with PoE (GXP1625/GXP1628/GXP1630 only), EHS (Electronic Hook-Switch) with Plantronics headsets, 3-ways conference on GXP1610/GXP1615/GXP1620/GXP1625/GXP1628 and up to 4-ways conference on GXP1630, superb full-duplex hands-free speakerphone with advanced acoustic echo cancellation, advanced security protection for privacy, and compatible with Grandstream UCM Features. It is a perfect choice for small-to-medium businesses looking for a high quality, feature rich IP phone with affordable cost.



 **Caution:**

Changes or modifications to this product not expressly approved by Grandstream, or operation of this product in any way other than as detailed by this User Manual, could void your manufacturer warranty.

 **Warning:**

Please do not use a different power adaptor with the GXP1610/GXP1615/GXP1620/GXP1625/GXP1628/GXP1630 as it may cause damage to the products and void the manufacturer warranty.

This document is subject to change without notice. The latest electronic version of this user manual is available for download here:

<http://www.grandstream.com/support>

Reproduction or transmittal of the entire or any part, in any form or by any means, electronic or print, for any purpose without the express written permission of Grandstream Networks, Inc is not permitted.

 **FCC Caution:**

Any Changes or modifications not expressly approved by the party responsible for compliance could void the user's authority to operate the equipment. This device complies with part 15 of the FCC Rules. Operation is subject to the following two conditions: (1) This device may not cause harmful interference, and (2) this device must accept any interference received, including interference that may cause undesired operation.

Note: This equipment has been tested and found to comply with the limits for a Class B digital device, pursuant to part 15 of the FCC Rules. These limits are designed to provide reasonable protection against harmful interference in a residential installation. This equipment generates uses and can radiate radio frequency energy and, if not installed and used in accordance with the instructions, may cause harmful interference to radio communications. However, there is no guarantee that interference will not occur in an installation. If this equipment does cause harmful interference to radio or television reception, which can be determined by turning the equipment off and on, the user is encouraged to try to correct the interference by one or more of the following measures:

- Reorient or relocate the receiving antenna.
 - Increase the separation between the equipment and receiver.
 - Connect the equipment into an outlet on a circuit different from that to which the receiver is connected.
 - Consult the dealer or an experienced radio/TV technician for help.
-



PRODUCT OVERVIEW

Feature Highlights (GXP1610/GXP1615/GXP1620/GXP1625/GXP1628)

- 132*48 pixels backlit graphical LCD display (GXP1610/GXP1615 don't support backlit)
- 2 dual-color line keys, 3 XML programmable context-sensitive soft keys, 8 BLF keys (GXP1628 only), 3-way conference, multi-language support
- HD wideband audio (GXP1620/GXP1625/GXP1628 only), superb full-duplex hands-free speakerphone with advanced acoustic echo cancellation and excellent double-talk performance
- Large phonebook (up to 1000 contacts) and call history (up to 200 records)
- Automated personal information service (e.g., local weather, etc.), personalized music ring tone/ring back tone, flexible customizable screen content & format using XML, and advanced Web and enterprise applications, local weather service
- Dual switched 10/100 Mbps ports on GXP1610/GXP1615/GXP1620/GXP1625, dual switched auto-sensing 10/100/1000 Mbps Ethernet ports on GXP1628, integrated PoE on GXP1615/GXP1625/GXP1628
- Automated provisioning using TR-069 or encrypted XML configuration file, SRTP and TLS for advanced security protection, 802.1x for media access control
- Perfectly compatible with Grandstream UCM Features
- Innovative UI design (easy and useable multi-language support)
- Use with Grandstream's UCM6xxx series IP PBX appliance for Zero-Config provisioning, 1-touch call recording and more

Feature Highlights (GXP1630)

- 132*64 pixels backlit graphical LCD display
- 3 dual-color line keys, 3 XML programmable context-sensitive soft keys, 8 BLF keys, 4-way conference, multi-language support
- HD wideband audio, superb full-duplex hands-free speakerphone with advanced acoustic echo cancellation and excellent double-talk performance
- Large phonebook (up to 1000 contacts) and call history (up to 200 records)
- Automated personal information service (e.g., local weather, etc.), personalized music ring tone/ring back tone, flexible customizable screen content & format using XML, and advanced Web and enterprise applications, local weather service
- Dual switched auto-sensing 10/100/1000 Mbps Ethernet ports with integrated PoE



- Automated provisioning using TR-069 or encrypted XML configuration file, SRTP and TLS for advanced security protection, 802.1x for media access control
- Perfectly compatible with Grandstream UCM Features
- Innovative UI design (easy and useable multi-language support)
- Use with UCM6xxx IP PBX appliance for Zero-Config provisioning, 1-touch call recording and more

GXP1610/GXP1615/GXP1620/GXP1625/GXP1628/GXP1630 Technical Specifications

Table 1: GXP1610/GXP1615 Technical Specifications

Protocols/Standards	SIP RFC3261, TCP/IP/UDP, RTP/RTCP, RTCP-XR, HTTP/HTTPS, FTP/FTPS, ARP/RARP, ICMP, DNS (A record, SRV, NAPTR), DHCP, PPPoE, SSH, TFTP, NTP, STUN, SIMPLE, LLDP-MED, LDAP, TR-069, 802.1x, TLS, SRTP
Network Interfaces	Dual switched 10/100 Mbps ports, integrated PoE (GXP1615 only)
Graphic Display	132*48 LCD display
Feature Keys	2 line keys with dual-color LED and 1 SIP account.3 XML programmable context sensitive soft keys. 5 (navigation, menu) keys. 13 dedicated function keys for PAGE/INTERCOM, PHONEBOOK, MESSAGE, HOME, HOLD, RECORD, MUTE, HEADSET, TRANSFER, CONFERENCE, SEND and REDIAL, SPEAKERPHONE, VOLUME
Voice Codecs	Support for G.711μ/a, G.722 (wide-band), G.723.1, G.726-32, G.729 A/B, iLBC, in-band and out-of-band DTMF (In audio, RFC2833, SIP INFO)
Telephony Features	Hold, transfer, forward (unconditional/no-answer/busy), 3-way conference, call park/pickup, downloadable phone book (XML, LDAP, up to 1000 items), call waiting, call history (up to 200 records), off-hook auto dial, auto answer, click-to-dial, flexible dial plan, Hot Desking, personalized music ringtones, server redundancy & fail-over
Headset Jack	RJ9 headset jack (allowing EHS with Plantronics headsets)
Base Stand	Yes, allow 2 angle positions available, Wall Mountable
QoS	Layer 2 QoS (802.1Q, 802.1P) and Layer 3 (ToS, DiffServ, MPLS) QoS
Security	User and administrator level access control, MD5 and MD5-sess based authentication, 256-bit AES encrypted configuration file, TLS, SRTP, HTTPS, 802.1x media access control



Multi-language	English, German, Italian, French, Spanish, Portuguese, Russian, Croatian, simplified and traditional Chinese, Korean, Japanese, and more
Upgrade/Provisioning	Firmware upgrade via TFTP / HTTP / HTTPS/ FTP/FTPS, mass provisioning using TR-069 or AES encrypted XML configuration file
Power & Green Energy Efficiency	Universal Power Supply Input 100-240VAC 50-60Hz; Output +5VDC, 600mA
Temperature and Humidity	Operation: 0°C to 40°C Storage: -10°C to 60°C Humidity: 10% to 90% Non-condensing
Physical	Dimension: 209mm (L) x 184.5mm (W) x 76.2mm (H) (with handset) Unit Weight: 0.74kg Package Weight: 1.1kg
Package Content	GXP1610/GXP1615 phone, handset with cord, base stand, universal power supply, network cable, Quick Installation Guide, brochure, GPL license
Compliance	FCC: Part 15 (CFR 47) Class B CE: EN55022 Class B, EN55024, EN61000-3-2, EN61000-3-3, EN60950-1 RCM: AS/ACIF S004; AS/NZS CISPR22/24; AS/NZS 60950; AS/NZS 60950.1

Table 2: GXP1620/GXP1625 Technical Specifications

Protocols/Standards	SIP RFC3261, TCP/IP/UDP, RTP/RTCP, RTCP-XR, HTTP/HTTPS, FTP/FTPS, ARP/RARP, ICMP, DNS (A record, SRV, NAPTR), DHCP, PPPoE, SSH, TFTP, NTP, STUN, SIMPLE, LLDP-MED, LDAP, TR-069, 802.1x, TLS, SRTP
Network Interfaces	Dual switched 10/100 Mbps ports, integrated PoE (GXP1625 only)
Graphical Display	132*48 pixel backlit graphical LCD display
Feature Keys	2 line keys with dual-color LED and 2 SIP accounts. 3 XML programmable context sensitive soft keys. 5 (navigation, menu) keys. 13 dedicated function keys for MUTE, HEADSET, TRANSFER, CONFERENCE, SEND and REDIAL, SPEAKERPHONE, VOLUME, PHONEBOOK, MESSAGE, HOLD, PAGE/INTERCOM, RECORD, HOME
Voice Codecs	Support for G.711μ/a, G.722 (wide-band), G.723.1, G.726-32, G.729 A/B, iLBC, in-band and out-of-band DTMF (In audio, RFC2833, SIP INFO)

Telephony Features	Hold, transfer, forward (unconditional/no-answer/busy), call park/pickup, 3-way conference, shared-call-appearance (SCA) / bridged-line-appearance (BLA), downloadable phone book (XML, LDAP, up to 1000 items), call waiting, call history (up to 200 records), off-hook auto dial, auto answer, click-to-dial, flexible dial plan, Hot Desking, personalized music ringtones, server redundancy & fail-over.
Headset Jack	RJ9 headset jack (allowing EHS with Plantronics headsets)
HD Audio	Yes, HD handset and speakerphone with support for wideband audio
Base Stand	Yes, 2 angle positions available, Wall Mountable
QoS	Layer 2 QoS (802.1Q, 802.1P) and Layer 3 (ToS, DiffServ, MPLS) QoS
Security	User and administrator level access control, MD5 and MD5-sess based authentication, 256-bit AES encrypted configuration file, TLS, SRTP, HTTPS, 802.1x media access control
Multi-language	English, German, Italian, French, Spanish, Portuguese, Russian, Croatian, simplified and traditional Chinese, Korean, Japanese, and more
Upgrade/Provisioning	Firmware upgrade via TFTP / HTTP / HTTPS /FTP/FTPS, mass provisioning using TR-069 or AES encrypted XML configuration file
Power & Green Energy Efficiency	Universal Power Supply Input 100-240VAC 50-60Hz; Output +5VDC, 600mA PoE IEEE802.3 af Class 2, 3.84W-6.49W (GXP1625 only)
Temperature and Humidity	Operation: 0°C to 40°C Storage: -10°C to 60°C Humidity: 10% to 90% Non-condensing
Physical	Dimension: 209mm (L) x 184.5mm (W) x 76.2mm (H) (with handset) Unit Weight: 0.73kg Package Weight: 1.1kg
Package Content	GXP1620/GXP1625 phone, handset with cord, base stand, universal power supply, network cable, Quick Installation Guide, brochure, GPL license
Compliance	FCC: Part 15 (CFR 47) Class B CE: EN55022 Class B, EN55024, EN61000-3-2, EN61000-3-3, EN60950-1 RCM: AS/ACIF S004; AS/NZS CISPR22/24; AS/NZS 60950; AS/NZS 60950.1



Table 3: GXP1628 Technical Specifications

Protocols/Standards	SIP RFC3261, TCP/IP/UDP, RTP/RTCP, RTCP-XR, HTTP/HTTPS, FTP/FTPS, ARP/RARP, ICMP, DNS (A record, SRV, NAPTR), DHCP, PPPoE, SSH, TFTP, NTP, STUN, SIMPLE, LLDP-MED, LDAP, TR-069, 802.1x, TLS, SRTP
Network Interfaces	Dual switched 10/100/1000 Mbps ports, integrated PoE
Graphical Display	132 x 48 backlit graphical LCD display
Feature Keys	2 line keys with dual-color LED and 2 SIP accounts. 3 XML programmable context sensitive soft keys. 5 (navigation, menu) keys. 8 BLF keys. 13 dedicated function keys for PAGE/INTERCOM, PHONEBOOK, MESSAGE, HOME, HOLD, RECORD, MUTE, HEADSET, TRANSFER, CONFERENCE, SEND and REDIAL, SPEAKERPHONE, VOLUME
Voice Codexs	Support for G.711 μ /a, G.722 (wide-band), G.723.1, G.726-32, G.729 A/B, iLBC, in-band and out-of-band DTMF (In audio, RFC2833, SIP INFO)
Telephony Features	Hold, transfer, forward (unconditional/no-answer/busy), call park/pickup, 3-way conference, shared-call-appearance (SCA) / bridged-line-appearance (BLA), downloadable phone book (XML, LDAP, up to 1000 items), call waiting, call history (up to 200 records), off-hook auto dial, auto answer, click-to-dial, flexible dial plan, Hot Desking, personalized music ringtones, server redundancy & fail-over.
Headset Jack	RJ9 headset jack (allowing EHS with Plantronics headsets)
HD Audio	Yes, HD handset and speakerphone with support for wideband audio
Base Stand	Yes, 2 angle positions available, Wall Mountable
QoS	Layer 2 QoS (802.1Q, 802.1P) and Layer 3 (ToS, DiffServ, MPLS) QoS
Security	User and administrator level access control, MD5 and MD5-sess based authentication, 256-bit AES encrypted configuration file, TLS, SRTP, HTTPS, 802.1x media access control
Multi-language	English, German, Italian, French, Spanish, Portuguese, Russian, Croatian, simplified and traditional Chinese, Korean, Japanese, and more
Upgrade/Provisioning	Firmware upgrade via TFTP / HTTP / HTTPS / FTP/FTPS, mass provisioning using TR-069 or AES encrypted XML configuration file
Power & Green Energy Efficiency	Universal Power Supply Input 100-240VAC 50-60Hz; Output +5VDC, 600mA PoE IEEE802.3 af Class 2, 3.84W-6.49W



Temperature and Humidity	Operation: 0°C to 40°C Storage: -10°C to 60°C Humidity: 10% to 90% Non-condensing
Physical	Dimension: 220.5mm (L) x 192.5mm (W) x 76.0mm (H) (with handset) Unit weight: 0.8kg; Package weight: 1.2kg
Package Content	GXP1628, handset with cord, base stand, universal power supply, network cable, Quick Installation Guide, brochure, GPL license, BLF label cards
Compliance	FCC: Part 15 (CFR 47) Class B CE: EN55022 Class B, EN55024, EN61000-3-2, EN61000-3-3, EN60950-1 RCM: AS/ACIF S004; AS/NZS CISPR22/24; AS/NZS 60950; AS/NZS 60950.1

Table 4: GXP1630 Technical Specifications

Protocols/Standards	SIP RFC3261, TCP/IP/UDP, RTP/RTCP, RTCP-XR, HTTP/HTTPS, FTP/FTPS, ARP/RARP, ICMP, DNS (A record, SRV, NAPTR), DHCP, PPPoE, SSH, TFTP, NTP, STUN, SIMPLE, LLDP-MED, LDAP, TR-069, 802.1x, TLS, SRTP
Network Interfaces	Dual switched auto-sensing 10/100/1000 Mbps Ethernet ports, integrated PoE
Graphical Display	132 x 64 backlit graphical LCD display
Feature Keys	3 line keys with dual-color LED and 3 SIP accounts. 3 XML programmable context sensitive soft keys. 5 (navigation, menu) keys. 8 BLF keys. 13 dedicated function keys for PAGE/INTERCOM, PHONEBOOK, MESSAGE, HOME, HOLD, RECORD, MUTE, HEADSET, TRANSFER, CONFERENCE, SEND and REDIAL, SPEAKERPHONE, VOLUME
Voice Codecs	Support for G.711μ/a, G.722 (wide-band), G.723.1, G.726-32, G.729 A/B, iLBC, in-band and out-of-band DTMF (In audio, RFC2833, SIP INFO)
Telephony Features	Hold, transfer, forward (unconditional/no-answer/busy), call park/pickup, 4-ways conference, shared-call-appearance (SCA) / bridged-line-appearance (BLA), downloadable phone book (XML, LDAP, up to 1000 items), call waiting, call history (up to 200 records), off-hook auto dial, auto answer, click-to-dial, flexible dial plan, Hot Desking, personalized music ringtones, server redundancy & fail-over.
Headset Jack	RJ9 headset jack (allowing EHS with Plantronics headsets)

HD Audio	Yes, HD handset and speakerphone with support for wideband audio
Base Stand	Yes, 2 angle positions available, Wall Mountable
QoS	Layer 2 QoS (802.1Q, 802.1P) and Layer 3 (ToS, DiffServ, MPLS) QoS
Security	User and administrator level access control, MD5 and MD5-sess based authentication, 256-bit AES encrypted configuration file, TLS, SRTP, HTTPS, 802.1x media access control
Multi-language	English, German, Italian, French, Spanish, Portuguese, Russian, Croatian, simplified and traditional Chinese, Korean, Japanese, and more
Upgrade/Provisioning	Firmware upgrade via TFTP / HTTP / HTTPS/ FTP/FTPS, mass provisioning using TR-069 or AES encrypted XML configuration file
Power & Green Energy Efficiency	Universal Power Supply Input 100-240VAC 50-60Hz; Output +5VDC, 600mA PoE IEEE802.3 af Class 2, 3.84W-6.49W
Temperature and Humidity	Operation: 0°C to 40°C Storage: -10°C to 60°C Humidity: 10% to 90% Non-condensing
Physical	Dimension: 220.5mm (L) x 192.5mm (W) x 76.0mm (H) (with handset) Unit weight: 0.8kg; Package weight: 1.2kg
Package Content	GXP1630 phone, handset with cord, base stand, universal power supply, network cable, Quick Installation Guide, brochure, GPL license, BLF label cards
Compliance	FCC : Part 15 (CFR 47) Class B CE : EN55022 Class B, EN55024, EN61000-3-2, EN61000-3-3, EN60950-1 RCM: AS/ACIF S004; AS/NZS CISPR22/24; AS/NZS 60950; AS/NZS 60950.1



CONFIGURATION GUIDE

The GXP1610/GXP1615/GXP1620/GXP1625/GXP1628/GXP1630 can be configured via two ways:

- LCD Configuration Menu using the phone's keypad.
- Web GUI embedded on the phone using PC's web browser.

Configuration via Keypad

To configure the LCD menu using phone's keypad, follow the instructions below:

- **Enter MENU options.** When the phone is in idle, press the round MENU button to enter the configuration menu.
- **Navigate in the menu options.** Press the UP/DOWN/LEFT/RIGHT arrow keys to navigate in the menu options.
- **Enter/Confirm selection.** Press the round MENU button to enter the selected option.
- **Exit.** Press LEFT arrow key to exit to the previous menu.
- The phone automatically exits MENU mode with an incoming call, when the phone is off hook or the MENU mode if left idle for more than 60 seconds.
- When the phone is in idle, pressing the navigation keys UP/DOWN/RIGHT can access the call history entries:
 - UP – Missed Calls
 - DOWN – Dialed Calls
 - RIGHT – Answered Calls

The MENU options are listed in the following table.

Table 5: GXP1610/GXP1615/GXP1620/GXP1625/GXP1628/GXP1630 Menu Options

Call History	<p>Call History sub menu includes the following options:</p> <ul style="list-style-type: none"> • Local Call Log: Displays answered calls, dialed calls, missed calls, transferred calls, forwarded calls. • Broadsoft Call Log: Displays Broadsoft call log.
---------------------	---



Status	<p>Status sub menu includes the following options:</p> <ul style="list-style-type: none"> • Network Status. Press to enter the sub menu for IP setting information (DHCP/Static IP/PPPoE), IPv4 address, IPv6 address, Subnet Mask, Gateway, DNS server and NTP server. • Account Status. Shows account registration status. • System status <ul style="list-style-type: none"> • Hardware menu: hardware version and P/N number. • Software Version menu: boot, core, base, prog, locale version, recovery version and MAC address. • IP Geographic Information menu: city, language and time zone. • Special feature menu: Display the special features enabled.
Contacts	<p>Contacts sub menu includes the following options:</p> <ul style="list-style-type: none"> • Local Phonebook Displays phonebook and users could add, edit, search and delete contacts, or download phonebook XML to the phone. When doing phonebook search, user can only search ASCII characters. • Local Group Displays phonebook group. Note: Besides 3 embedded groups: Family, Friends and Work, user can create, edit and delete your own new groups. GXP phone allows at most 7 customized groups. • Broadsoft Phonebook • LDAP Directory Configures LDAP directory options, displays LDAP directory by searching. LDAP search does not support entering Non-ASCII characters.
Messages	<ul style="list-style-type: none"> • Instant Messages Displays received instant messages. • Voice Mails Displays voice mail messages.



<p>Preference</p>	<p>Preference sub menu includes the following options:</p> <ul style="list-style-type: none"> • Do Not Disturb Enables/disables Do Not Disturb on the phone. • Ring Tone Configures different ring tones for incoming call. • Ring Volume Adjusts ring volume by pressing left/right arrow key. • LCD Contrast Adjusts LCD contrast by pressing left/right arrow key. • LCD Brightness (Not applicable to GXP1610/GXP1615) Adjusts LCD brightness of idle state and active state by pressing left/right arrow key. • Download SCR XML Triggers the phone to download the XML idle screen file immediately. The XML idle screen server path and downloading method need to be set up correctly from Web GUI first. • Erase Custom SCR Erases custom XML idle screen previously loaded on the phone. After erasing it, the phone will show default idle screen. • Display Language Selects the language to be displayed on the phone's LCD. Users could select Automatic for local language based on IP location if available. • Date Time Configures time zone and NTP server on the phone. • Security Configures the access control for the users to configure from keypad Menu, select the web access mode, and enable / disable the SSH access. • Headset type Select Normal or Plantronics EHS headset type. • Star Key Lock Turns on/off keypad lock feature and configures keypad lock password.
<p>Direct IP Call</p>	<p>Makes direct IP call.</p>



Phone	<p>Phone sub menu includes the following options:</p> <ul style="list-style-type: none"> • SIP Configures SIP Proxy, Outbound Proxy, SIP User ID, SIP Auth ID, SIP Password, SIP Transport and Audio information to register SIP account on the phone. • Call Features Configures call forward features for Forward All, Forward Busy, Forward No Answer and No Answer Timeout.
System	<p>System sub menu includes the following options:</p> <ul style="list-style-type: none"> • Network <ul style="list-style-type: none"> • Selects preferred internet protocol (IP v4 or IP v6); • Configures IP mode (DHCP/Static IP/PPPoE); • Configures DHCP option 12 (Host Name) and option 60 (Vendor Class ID); • Configures PPPoE account ID and password; • Configures IP address, Netmask, Gateway, DNS Server 1 and DNS Server 2; • Configures 802.1X mode; • Configures Layer 2 QoS; • Configures PC Port Settings; • Configures OpenVPN Settings; • Configures IPv6 Settings • Upgrade Configures firmware server and config server for upgrading and provisioning the phone. • UCM Detect Displays connected UCM server List and specifies Protocol, IP and Port of the target UCM server. • Factory Functions Factory Functions sub menu includes the following options: <ul style="list-style-type: none"> • <i>Audio Loopback</i> Speak to the phone using speaker/handset/headset. If you can hear your voice, your audio is working fine. Press Menu button to exit audio loopback mode.



	<ul style="list-style-type: none"> • <i>Diagnostic Mode</i> All LEDs will light up. Press any key (except MENU key) on the keypad to display the button name in the LCD. Lift and put back the handset or press Menu button to exit diagnostic mode. • <i>Keyboard Diagnostic</i> Press all the available keys on the phone. The LCD will display the name for the keys to be pressed to finish the keyboard diagnostic mode. • <i>Certification Verification</i> Verify the certificate loaded on the phone. • Factory Reset Resets the phone to factory default settings.
Reboot	Reboots the phone



The following picture shows the keypad MENU configuration flow.

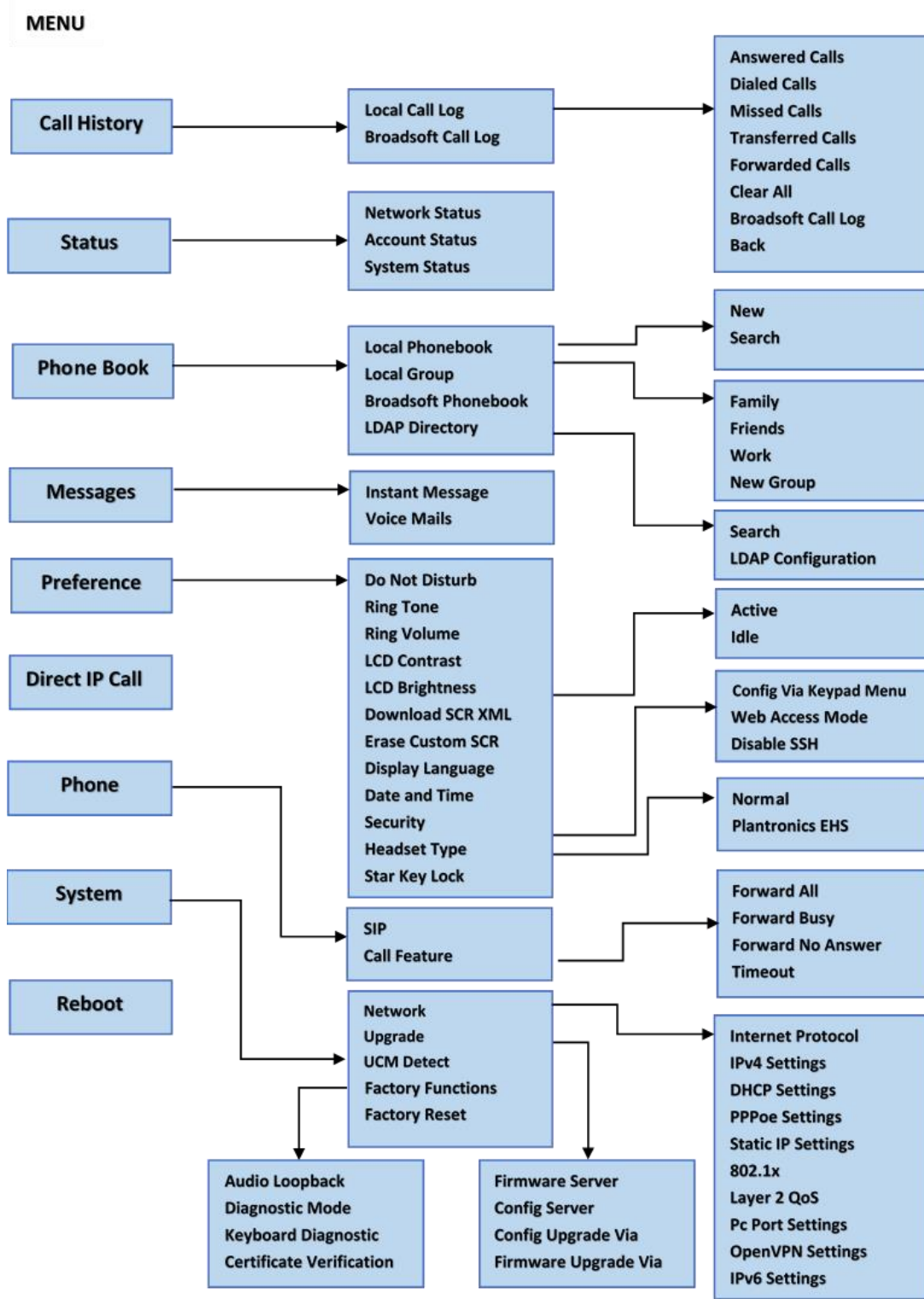


Figure 1: Keypad Menu Flow



Configuration via Web Browser

The GXP1610/GXP1615/GXP1620/GXP1625/GXP1628/GXP1630 embedded Web server responds to HTTP/HTTPS GET/POST requests. Embedded HTML pages allow a user to configure the IP phone through a Web browser such as Microsoft's IE, Mozilla Firefox and Google Chrome.

To access the GXP1610/GXP1615/GXP1620/GXP1625/GXP1628/GXP1630 Web GUI:

1. Connect the computer to the same network as the phone.
2. Make sure the phone is turned on and shows its IP address. You may check the IP address on LCD.
3. Open a Web browser on your computer.
4. Enter the phone's IP address in the address bar of the browser.
5. Enter the administrator's login and password to access the Web Configuration Menu.

Notes:

- The computer should be connected to the same sub-network as the phone. This can be easily done by connecting the computer to the same hub or switch as the phone connected to. In absence of a hub/switch (or free ports on the hub/switch), please connect the computer directly to the PC port on the back of the phone.
- If the phone is properly connected to a working Internet connection, the IP address of the phone will display in MENU→Status→Network Status. This address has the format: xxx.xxx.xxx.xxx, where xxx stands for a number from 0-255. Users will need this number to access the Web GUI. For example, if the phone has IP address 192.168.40.154, please enter "http://192.168.40.154" in the address bar of the browser.
- There are two default passwords for the login page:

Table 6: User / Admin Levels Information

User Level	User	Password	Web Pages Allowed
End User Level	user	123	Only Status page, Basic Settings in Advanced Settings page and some settings in maintenance page.
Administrator Level	admin	admin	Browse all pages

- When accessing the GXP16xx for the first time or after factory reset, users will be asked to change the default administrator password before accessing GXP16xx Web interface.
- The new password field is case sensitive with a maximum length of 25 characters. Using strong password including letters, digits and special characters is recommended for better security.



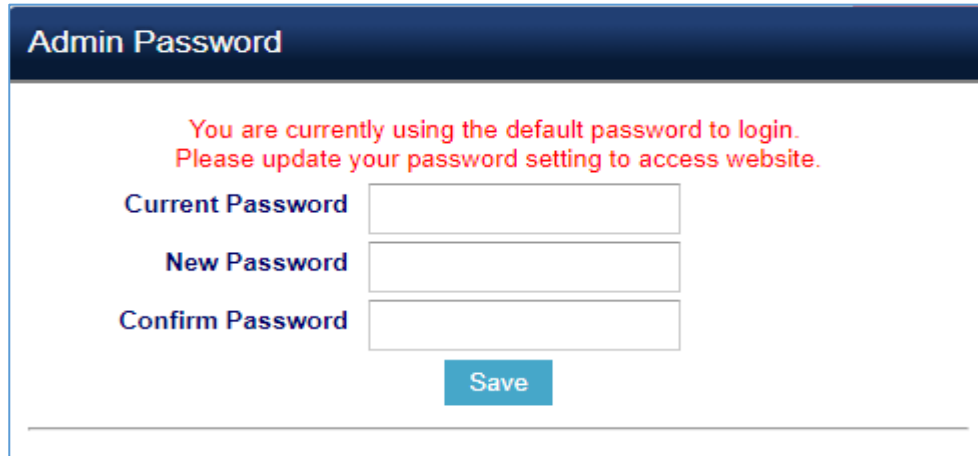


Figure 2: Change Password on first boot

- When changing any settings, always SUBMIT them by pressing the SAVE button on the bottom of the page. After submitting the changes in all the Web GUI pages, reboot the phone to have the changes take effect if necessary. All the options under Basic Setting and Account Setting, and most of the options under Advanced Settings do not require reboot after submitting the changes. Under Advanced Setting, the parameters on network configuration require reboot after update.

Definitions

This section describes the options in the GXP1610/GXP1615/GXP1620/GXP1625/GXP1628/GXP1630 Web GUI. As mentioned, you can log in as an administrator or an end user.

- **Status:** Displays the Account status, Network status, and System Info of the phone.
- **Account:** To configure the SIP account.
- **Advanced Settings:** To configure Call features, Time settings, Web services, Programmable keys and etc.
- **Maintenance:** To configure Network settings, Web/SSH Access, Upgrading and provisioning, Language, Contacts and etc.

Status Page Definitions

Table 7: Status Page Definitions

Status → Account Status	
Account x	Account index.
SIP User ID	Displays the configured SIP User ID.
SIP Server	Displays the configured SIP Server address.



SIP Registration	Displays SIP registration status YES/NO.
Status → Network Status	
MAC Address	Global unique ID of device, in HEX format. The MAC address will be used for provisioning and can be found on the label coming with original box and on the label located on the back of the device.
IP Setting	DHCP, Static IP or PPPoE.
IPv4 Address	The IPv4 address obtained on the phone.
IPv6 Address	The IPv6 address obtained on the phone.
OpenVPN® IP	The IP address of the phone obtained from the OpenVPN server
Subnet Mask	The subnet mask obtained on the phone.
Gateway	The gateway address obtained on the phone.
DNS Server 1	The DNS server address 1.
DNS Server 2	The DNS server address 2.
PPPoE Link Up	PPPoE connection status.
NAT Type	NAT Type
NAT Traversal	Display the NAT traversal status of Account 1 and Account 2.
Status → System Info	
Product Model	Product model of the phone.
Part Number	Product part number.
Software Version	<ul style="list-style-type: none"> • Boot Version: boot version number. • Core Version: core version number. • Base Version: base version number. • Program Version. This is the main firmware release number, which is always used for identifying the software system of the phone. • Locale Version. This is the version of localization language package. • Recovery Version.



IP Geographic Information	<ul style="list-style-type: none"> • City: Displays the city name. • Language: Displays current language been used. • Time Zone: Displays current time zone.
Special Feature	<ul style="list-style-type: none"> • OpenVPN Support: Display the status of the OpenVPN feature.
System Time	<ul style="list-style-type: none"> • System up time: Displays system up time since the last reboot. • System time: Displays current system time on the phone system.
Service Status	GUI and Phone service status.
Core Dump	Core dump file that could be downloaded for troubleshooting purpose.
Status → GNU GPL License	
GNU GPL License	Shows the GNU GPL License information.

Account Page Definitions

The GXP1610/GXP1615 support one SIP account, GXP1620/GXP1625/GXP1628 support two SIP accounts, and GXP1630 supports three SIP accounts that can be configured to accommodate independent SIP accounts. Every SIP account has an individual configuration page.

Table 8: Account Page Definitions

Account x → General Settings	
Account Active	This field indicates whether the account is active. The default setting is “Yes”.
Account Name	The name associated with each account to be displayed on the LCD.
SIP Server	The URL or IP address, and port of the SIP server. This is provided by your VoIP service provider (ITSP).
Secondary SIP Server	The URL or IP address, and port of the SIP server. This will be used when the primary SIP server fails.
Outbound Proxy	IP address or Domain name of the Primary Outbound Proxy, Media Gateway, or Session Border Controller. It’s used by the phone for Firewall or NAT penetration in different network environments. If a symmetric NAT is detected, STUN will not work and ONLY an Outbound Proxy can provide a solution.
Backup Outbound Proxy	Secondary outbound proxy which will be used when the primary proxy cannot be connected.



BLF Server	The URL or IP address, and port of the BLF Server. When “BLF Server” is configured, the SUBSCRIBE request will be sent to this address for BLF.
SIP User ID	<p>User account information, provided by your VoIP service provider (ITSP). It’s usually in the form of digits similar to phone number or actually a phone number. Users can also register an account with a SIP user ID that carries “@”. For example, you can put “111@test.com” in your SIP User ID field. When registering, the phone will register your account as “111@test.com” instead of 111.</p> <p>Note: The server domain will not be included in the SIP from header.</p>
Authentication ID	SIP service subscriber’s Authenticate ID used for authentication. It can be identical to or different from the SIP User ID. This field supports up to 8192 characters.
Authentication Password	The account password required for the phone to authenticate with the ITSP (SIP) server before the account can be registered. After it is saved, this will appear as hidden for security purpose.
Name	The SIP server subscriber’s name (optional) that will be used for Caller ID display.
Voice Mail Access Number	<p>This parameter allows you to access voice messages by pressing the MESSAGE button on the phone.</p> <p>This ID is usually the VM portal access number. For example, in Asterisk server, 8500 could be used.</p>
Account Display	This option allows you to configure how your SIP account label will be displayed on the phone’s screen. If set to “User Name”, LCD account label will display the Account Name configured for this SIP account. If set to “User ID”, it will then display the SIP User ID configured for this SIP account.
Account x → Network Settings	
DNS Mode	<p>This parameter controls how the Search Appliance looks up IP addresses for hostnames. There are four modes: A Record, SRV, NATPTR/SRV, and Use Configured IP. The default setting is “A Record”. If the user wishes to locate the server by DNS SRV, the user may select “SRV” or “NATPTR/SRV”. If “Use Configured IP” is selected, please fill in the three fields below:</p> <ul style="list-style-type: none"> • Primary IP: Primary IP address where the phone sends DNS query to;



	<ul style="list-style-type: none"> • Backup IP 1; • Backup IP 2. <p>If SIP server is configured as domain name, phone will not send DNS query, but use “Primary IP” or “Backup IP x” to send SIP message if at least one of them are not empty. Phone will try to use “Primary IP” first. After 3 tries without any response, it will switch to “Backup IP x”, and then it will switch back to “Primary IP” after 3 re-tries. If SIP server is already an IP address, phone will use it directly even “User Configured IP” is selected.</p>
NAT Traversal	<p>This parameter configures whether the NAT traversal mechanism is activated. Users could select the mechanism from No, STUN, Keep-Alive, UPnP, Auto or VPN. If set to “STUN” and STUN server is configured, the phone will route according to the STUN server. If NAT type is Full Cone, Restricted Cone or Port-Restricted Cone, the phone will try to use public IP addresses and port number in all the SIP&SDP messages. The phone will send empty SDP packet to the SIP server periodically to keep the NAT port open if it is configured to be “Keep-Alive”. Configure this to be “No” if an outbound proxy is used. “STUN” cannot be used if the detected NAT is symmetric NAT.</p>
Proxy-Require	<p>A SIP Extension to notify the SIP server that the phone is behind a NAT/Firewall. Do not configure this parameter unless this feature is supported on the SIP server.</p>
Use SBC	<p>Indicate whether or not an SBC server is used.</p>
Account x → SIP Settings → Basic Settings	
TEL URI	<p>If the phone has an assigned PSTN telephone number, this field should be set to “User=Phone”. Then a “User=Phone” parameter will be attached to the Request-Line and “TO” header in the SIP request to indicate the E.164 number. If set to “Enable”, “Tel:” will be used instead of “SIP:” in the SIP request. The default setting is “Disable”.</p>
SIP Registration	<p>Selects whether the phone will send SIP Register messages to the proxy/server. The default setting is “Yes”.</p>
Unregister On Reboot	<p>Allows the SIP user's registration information to be cleared when the phone reboots. The SIP REGISTER message will contain “Expires: 0” to unbind the connection. Three options are available:</p>



	<ul style="list-style-type: none"> • If set to "All", the SIP user's registration information will be cleared when the phone reboots. The SIP Contact header will contain "*" to notify the server to unbind the connection. • If set to "Instance", the SIP user will be unregistered on current phone only. • If set to "No", the phone will not unregister the SIP account when rebooting. The default setting is "No".
Register Expiration	Specifies the frequency (in minutes) in which the phone refreshes its registration with the specified registrar. The default value is 60 minutes. The maximum value is 64800 minutes (about 45 days).
Subscribe Expiration	Specifies the frequency (in minutes) in which the phone refreshes its subscription with the specified registrar. The default is 60, and maximum value is 64800 (about 45 days).
Reregister Before Expiration	Specifies the time frequency (in seconds) that the phone sends re-registration request before the Register Expiration. The default value is 0.
Enable OPTIONS Keep Alive	Select whether or not the phone will keep sending a message to check the connection with the server.
OPTIONS Keep Alive Interval	Specifies the frequency (in second) in which the phone will send the Keep Alive message to the server.
OPTIONS Keep Alive Max Lost	Specifies the maximum number of allowed lost packet before the phone will refresh its registration.
Local SIP Port	Defines the local SIP port used to listen and transmit. The default value is 5060 for Account 1, 5062 for Account 2, and 5064 for Account 3.
SIP Registration Failure Retry Wait Time	Specifies the interval to retry registration if the process is failed. The default value is 20 seconds.
SIP T1 Timeout	SIP T1 Timeout is an estimate of the round-trip time of transactions between a client and server. If no response is received the timeout is increased, and request re-transmit retries would continue until a maximum amount of time define by T2. The default setting is 0.5 seconds.



SIP T2 Timeout	SIP T2 Timeout is the maximum retransmit time of any SIP request messages (excluding the INVITE message). The re-transmitting and doubling of T1 continues until it reaches the T2 value. The default setting is 4 seconds.
SIP Transport	Determines the network protocol used for the SIP transport. Users can choose from TCP, UDP and TLS.
SIP URI Scheme when using TLS	Specifies if "sip:" or "sips:" will be used when TLS/TCP is selected for SIP Transport. The default setting is "sips:".
Use Actual Ephemeral Port in Contact with TCP/TLS	This option is used to control the port information in the Via header and Contact header. If set to No, these port numbers will use the permanent listening port on the phone. Otherwise, they will use the ephemeral port for the connection.
Outbound Proxy Mode	Configures the outbound proxy mode, to place in route header in sending SIP messages, or always sent to outbound proxy. Default setting is "in route"
Support SIP Instance ID	Defines whether SIP Instance ID is supported or not. Default setting is "Yes".
SUBSCRIBE for MWI	When set to "Yes", a SUBSCRIBE for Message Waiting Indication will be sent periodically. The phone supports synchronized and non-synchronized MWI. The default setting is "No".
SUBSCRIBE for Registration	When set to "Yes", a SUBSCRIBE for Registration will be sent out periodically. The default setting is "No".
Enable 100rel	The use of the PRACK (Provisional Acknowledgment) method enables reliability to SIP provisional responses (1xx series). This is very important in order to support PSTN internetworking. To invoke a reliable provisional response, the 100rel tag is appended to the value of the required header of the initial signaling messages.
Callee ID Display	The phone supports Callee ID display as follows: <ul style="list-style-type: none"> • When set to "Auto" (Default), the phone will update the callee ID in the order of P-Asserted Identity Header, Remote-Party-ID Header and To Header in the 180 Ringing. • When set to "Disabled", callee id will be displayed as "Unavailable". • When set to "To Header", caller id will not be updated and displayed as To Header.



Caller ID Display	<p>The phone supports Caller ID display as follows:</p> <ul style="list-style-type: none"> • When set to “Auto” (Default), the phone will look for the caller ID in the order of P-Asserted Identity Header, Remote-Party-ID Header and From Header in the incoming SIP INVITE. • When set to “Disabled”, all incoming calls are displayed with “Unavailable”. • When set to “From Header”, the phone will display the caller ID based on the From Header in the incoming SIP INVITE. <p>Note: During call, if the phone receives NOTIFY message with type header:"application/cid-info+xml" and event header:"cid-info-update", the phone will take the message and update CID information and CID image.</p>
Ignore Alert-Info Header	<p>This option is used to configure default ringtone. If set to “Yes”, configured default ringtone will be played even if Alert-info header is present.</p> <p>The default setting is “No”.</p>
Add Auth Header On Initial REGISTER	<p>When enabled, Device will send Authentication Header on the first Register instead of second Register.</p> <p>Default is No.</p>
Account x → SIP Settings → Custom SIP Headers	
Use Privacy Header	<p>Controls whether the Privacy header will present in the SIP INVITE message or not, whether the header contains the caller info. When set to "Default", the Privacy Header will show in INVITE only when "Huawei IMS" special feature is on. If set to "Yes", the Privacy Header will always show in INVITE. If set to "No", the Privacy Header will not show in INVITE. Default setting is "Default".</p>
Use P-Preferred-Identity Header	<p>Controls whether the P-Preferred-Identity Header will present in the SIP INVITE message or not. The default setting is “default”: The P-Preferred-Identity Header will show in INVITE unless “Huawei IMS” special feature is on. If set to “Yes”, the P-Preferred-Identity Header will always show in INVITE. If set to “No”, the P-Preferred-Identity Header will not show in INVITE.</p>
Use P-Access Network-Info Header	<p>Enables/disables the use of P-Access-Network-Info header in SIP request. When disabled, the SIP message sent from the phone will not include the selected header. Default setting is “No”.</p>



Use P-Emergency-Info Header	Enables/disables the use of P-Emergency-Info header in SIP request. When disabled, the SIP message sent from the phone will not include the selected header. Default setting is “No”.
Use MAC Header	If Yes except REGISTER, the sip message for register or unregister will contains MAC address in the header, and all the outgoing SIP messages except REGISTER message will attach the MAC address to the User-Agent header; If Yes to ALL, the sip message for register or unregister will contains MAC address in the header, and all the outgoing SIP message including REGISTER will attach the MAC address to the User-Agent header; If No, neither will the MAC header be included in the register or unregister message nor the MAC address be attached to the User-Agent header for any outgoing SIP message.



Account x → SIP Settings → Advanced Features

Line-seize Timeout	For Shared Call Appearance, phone must send a SUBSCRIBE-request for the line-seize event package whenever a user attempts to take the shared line off hook. "Line Seize Timeout" is the line-seize event expiration timer. The default value is 15 seconds. The valid range is from 15 to 60.
Eventlist BLF URI	Configures the Eventlist BLF URI on the phone to monitor the extensions in the list with Multi-Purpose Key. If the server supports this feature, users need to configure an Eventlist BLF URI on the service side first (i.e., BLF1006@myserver.com) with a list of extensions included. On the phone, in this "Eventlist BLF URI" field, fill in the URI without the domain (i.e., BLF1006). To monitor the extensions in the list, under Web GUI → Settings → Programmable Keys page, please select "Eventlist BLF" in the key mode, choose account, enter the value of each extension in the list. (Supported only on GXP1628/GXP1630)
Auto Provision Eventlist BLFs	When enabled, empty multi-purpose keys will be automatically provisioned to the monitored extensions in the Eventlist BLF. Default setting is "Disabled". (Supported only on GXP1628/GXP1630)
Conference URI	Configures the conference URI when using Broadsoft N-way calling feature.
Music On Hold URI	Music On Hold URI to call when a call is on hold if server supports it.
BLF Call-pickup Prefix	Configures the prefix prepended to the BLF extension when the phone picks up a call with BLF key. (Supported only on GXP1628/GXP1630)
Call Pickup Barge-in Code	Set feature code of call pickup barge-in feature. (Supported only on GXP1628/GXP1630)
PUBLISH for Presence	Enables Presence feature on the phone. (Supported only onGXP1628/GXP1630)
Enable User Presence Subscription	If the user presence subscription is enabled, the phone will subscribe and notify about user presence to the sip server. Note: To enable this feature, register Genesys account on your phone's SIP account first. The SIP server should support this feature.
Hide Login Soft Key On Auto User Presence Subscription	This option allows you to hide the soft key to login or logout on idle screen if auto user ID and password are configured.



Auto User Presence ID	With this ID, the phone will subscribe user presence automatically once the account is registered.
Auto User Presence password	With this password, the phone will subscribe user presence automatically once the account is registered.
Special Feature	Different soft switch vendors have special requirements. Therefore, users may need select special features to meet these requirements. Users can choose from Standard, Nortel MCS, Broadsoft, CBCOM, RNK, Sylanro, Huawei IMS, PhonePower and iPageOn depending on the server type. Default is "Standard".
Broadsoft	
Broadsoft Call Center	Default setting is "Disabled". When set to "Enabled", a soft key "BSCCenter" is displayed on LCD. User can access different Broadsoft Call Center agent features via this softkey. Please note that "Feature Key Synchronization" will be enabled regardless of this setting.
Hoteling Event	With "Hoteling Event" enabled, user can access the Hoteling feature option by pressing the "BSCCenter" softkey. Default setting is "No".
Call Center Status	When set to "Yes", the phone will send SUBSCRIBE to the server to obtain call center status. The default setting is "No".
Feature Key Synchronization	This feature is used for Broadsoft call feature synchronization. When it's enabled, DND, Call Forward features and Call Center Agent status can be synchronized between Broadsoft server and phone. Default is "Disabled".
Broadsoft Call Park	When enabled, phone will send the SUBSCRIBE to Broadsoft server to obtain Broadsoft Call Park notification. Notes: The phone shows parked call notification on its LCD. If parked member is a monitored extension on BLF MPK key, the MPK will be flashing red.
Account x → SIP Settings → Session Timer	
Enable Session Timer	This option is used to enable or disable session timer on the phone side when server side can provide both session timer UPDATE or session audit UPDATE. The default setting is "Yes".



Session Expiration	<p>The SIP Session Timer extension (in seconds) that enables SIP sessions to be periodically "refreshed" via a SIP request (UPDATE, or re-INVITE).</p> <p>If there is no refresh via an UPDATE or re-INVITE message, the session will be terminated once the session interval expires.</p> <p>Session Expiration is the time (in seconds) where the session is considered timed out, provided no successful session refresh transaction occurs beforehand. The default setting is 180. The valid range is from 90 to 64800.</p>
Min-SE	<p>The minimum session expiration (in seconds). The default value is 90 seconds.</p> <p>The valid range is from 90 to 64800.</p>
Caller Request Timer	<p>If set to "Yes" and the remote party supports session timers, the phone will use a session timer when it makes outbound calls.</p>
Callee Request Timer	<p>If set to "Yes" and the remote party supports session timers, the phone will use a session timer when it receives inbound calls.</p>
Force Timer	<p>If Force Timer is set to "Yes", the phone will use the session timer even if the remote party does not support this feature.</p> <p>If Force Timer is set to "No", the phone will enable the session timer only when the remote party supports this feature. To turn off the session timer, select "No".</p>
UAC Specify Refresher	<p>As a Caller, select UAC to use the phone as the refresher; or select UAS to use the Callee or proxy server as the refresher.</p>
UAS Specify Refresher	<p>As a Callee, select UAC to use caller or proxy server as the refresher; or select UAS to use the phone as the refresher.</p>
Force INVITE	<p>The Session Timer can be refreshed using the INVITE method or the UPDATE method. Select "Yes" to use the INVITE method to refresh the session timer. The default setting is "No".</p>
Account x → SIP Settings → Security Settings → Security	
Check Domain Certificates	<p>Choose whether the domain certificates will be checked or not when TLS/TCP is used for SIP Transport. The default setting is "No".</p>
Validate Certification Chain	<p>Choose whether certification chain will be validated when TLS/TCP mode is used.</p>
Validate Incoming Messages	<p>Choose whether the incoming messages will be validated or not. The default setting is "No".</p>



Check SIP User ID for incoming INVITE	If set to “Yes”, SIP User ID will be checked in the Request URI of the incoming INVITE. If it doesn’t match the phone’s SIP User ID, the call will be rejected. The default setting is “No”.
Accept Incoming SIP from Proxy Only	When set to “Yes”, the SIP address of the Request URL in the incoming SIP message will be checked. If it doesn’t match the SIP server address of the account, the call will be rejected. The default setting is “No”.
Authenticate Incoming INVITE	If set to “Yes”, the phone will challenge the incoming INVITE for authentication with SIP 401 Unauthorized response. Default setting is “No”.
Account x → Audio Settings	
Send DTMF	<p>This parameter specifies the mechanism to transmit DTMF digits.</p> <p>There are 3 supported modes:</p> <ul style="list-style-type: none"> • In audio, which means DTMF is combined in the audio signal (not very reliable with low-bit-rate codecs). • RFC2833, which means to specify DTMF with RTP packet. Users could know the packet is DTMF in the RTP header as well as the type of DTMF. • SIP INFO, which use SIP info to carry DTMF. The defect of this mode is that it's easily to cause desynchronized of DTMF and media packet for the reason the SIP and RTP are transmitted respectively. Default setting is "RFC2833"
DTMF Payload Type	Configures the payload type for DTMF using RFC2833. Default value is 101.
Preferred Vocoder	7 different vocoder types are supported on the phone, including G.711 U-law (PCMU), G.711 A-law (PCMA), G.723.1, G.729A/B, G.722 (wide band), iLBC, and G726-32. Users can configure vocoders in a preference list that is included with the same preference order in SDP message.
Use First Matching Vocoder in 200OK SDP	<p>When set to “Yes”, the device will use the first matching vocoder in the received 200OK SDP as the codec.</p> <p>The default setting is “No”.</p>
Codec Negotiation Priority	<p>This option allows user to choose which Codec sequence to use.</p> <p>If set to “Caller”, the phone will negotiate the codecs based on the SDP from the received SIP INVITE. If set to “Callee”, the phone will negotiate the audio codecs based on the codec priority on the phone.</p>



Disable Multiple m line in SDP	If enabled, the phone always responses 1 m line in SDP regardless multiple m lines are offered.
SRTP Mode	Enables the SRTP mode based on your selection. Default setting is “Disabled”.
Symmetric RTP	Defines whether symmetric RTP is supported or not. Default setting is “No”.
Silence Suppression	Controls the silence suppression/VAD feature of the audio codecs except for G.723 (pending) and G.729. If set to “Yes”, a small quantity of RTP packets containing comfort noise will be sent during the periods of silence. If set to “No”, this feature is disabled. Default setting is “No”
Voice Frames Per TX	Configures the number of voice frames transmitted per packet. When configuring this, it should be noted that the “ptime” value for the SDP will change with different configurations here. This value is related to the codec used and the actual frames transmitted in payload during the call. For end users, it is recommended to use the default setting, as incorrect settings may influence the audio quality. The default setting is 2.
G723 Rate	This option determines the encoding rate for G723 codec. Users can choose from 6.3kbps encoding rate and 5.3kbps encoding rate. The default setting is “5.3kbps encoding rate”.
G.726-32 Packing Mode	Selects “ITU” or “IETF” for G.726-32 packing mode. The default setting is “IETF”.
iLBC Frame Size	This option determines the iLBC packet frame size. Users can choose from 20ms and 30ms. The default setting is “30ms”.
iLBC payload Type	This option is used to specify iLBC payload type. Valid type is 96-127.
Jitter Buffer Type	Selects either Fixed or Adaptive based on network conditions. The default setting is “Adaptive”.
Jitter Buffer Length	Defines jitter buffer length based on network conditions.
Hide Vocoder	Hides vocoder information on call screen if set to “yes”. Default settings is “No”.



Account x → Call Settings	
Early Dial	Selects whether or not to enable early dial. If it's set to "Yes", the SIP proxy must support 484 responses. The default setting is "No".
Dial Plan Prefix	Sets the prefix added to each dialed number.
Dial Plan	<p>A dial plan establishes the expected number and pattern of digits for a telephone number. This parameter configures the allowed dial plan for the phone.</p> <p>Dial Plan Rules:</p> <ol style="list-style-type: none"> 1. Accepted Digits: 1,2,3,4,5,6,7,8,9,0, *, #, A,a,B,b,C,c,D,d; 2. Grammar: x – any digit from 0-9; 3. Grammar: X – any character from 0-9, a-z, A-Z. <ol style="list-style-type: none"> a) xx+ - at least 2 digit numbers b) xx – only 2 digit numbers c) XX – two characters (AA, Ab, 1C, f5, 68,...) d) !test! : only string "test" will pass the dial plan check e) ^ - exclude f) [3-5] – any digit of 3, 4, or 5 g) [147] – any digit of 1, 4, or 7 h) <2=011> - replace digit 2 with 011 when dialing i) - the OR operand <ul style="list-style-type: none"> • <u>Example 1</u>: {[369]11 1617xxxxxxx} <p>Allow 311, 611, and 911 or any 11 digit numbers with leading digits 1617;</p> <ul style="list-style-type: none"> • <u>Example 2</u>: {^1900x+ <=1617>xxxxxxx} <p>Block any number of leading digits 1900 or add prefix 1617 for any dialed 7 digit numbers;</p> <ul style="list-style-type: none"> • <u>Example 3</u>: {1xxx[2-9]xxxxxx <2=011>x+} <p>Allows any number with leading digit 1 followed by a 3-digit number, followed by any number between 2 and 9, followed by any 7-digit number OR Allows any length of numbers with leading digit 2, replacing the 2 with 011 when dialed.</p> <p><u>Example of a simple dial plan used in a Home/Office in the US:</u></p> <pre>{ ^1900x. <=1617>[2-9]xxxxxx 1[2-9]xx[2-9]xxxxxx 011[2-9]x. [3469]11 }</pre> <p>Explanation of example rule (reading from left to right):</p> <ul style="list-style-type: none"> • ^1900x. – prevents dialing any number started with 1900; • <=1617>[2-9]xxxxxx – allows dialing to local area code (617) numbers by dialing 7 numbers and 1617 area code will be added automatically;



	<ul style="list-style-type: none"> 1[2-9]xx[2-9]xxxxxx - allows dialing to any US/Canada Number with 11 digits length; 011[2-9]x – allows international calls starting with 011; [3469]11 – allows dialing special and emergency numbers 311, 411, 611 and 911. <p>Note: In some cases, where the user wishes to dial strings such as *123 to activate voice mail or other applications provided by their service provider, the * should be predefined inside the dial plan feature. An example dial plan will be: { *x+ } which allows the user to dial * followed by any length of numbers. Max length of dial plan is up to 1024 characters.</p>
Bypass Dial Plan	<p>Bypass the dial plan when dialing from one of the available items: Contacts ; Call History Incoming Call ; Call History Outgoing Call ; Dialing Page ; MPK ; API</p> <p>The default settings bypass the dial plan for the MPK only.</p>
Call Log	<p>Configures Call Log setting on the phone. You can log all calls, only log incoming/outgoing calls or disable call log. The default setting is “Log All Calls”.</p>
Send Anonymous	<p>If set to “Yes”, the “From” header in outgoing INVITE messages will be set to anonymous, essentially blocking the Caller ID to be displayed.</p>
Anonymous Call Rejection	<p>If set to “Yes”, anonymous calls will be rejected. The default setting is “No”.</p>
Auto Answer	<p>If set to “Yes”, the phone will automatically turn on the speaker phone to answer incoming calls after a short reminding beep.</p>
Refer-To Use Target Contact	<p>If set to “Yes”, the “Refer-To” header uses the transferred target’s Contact header information for attended transfer. The default setting is “No”.</p>
Transfer on Conference Hangup	<p>Defines whether or not the call is transferred to the other party if the initiator of the conference hangs up.</p> <p>The default setting is “No”.</p>
Disable Recovery on Blind Transfer	<p>Defines whether to enable/disable recovery to the call to the transferee on failing blind transfer to the target.</p>
Blind Transfer Wait Timeout	<p>Defines the timeout (in seconds) for waiting SIP frag response in blind transfer. Valid range is 30 to 300.</p>



No Key Entry Timeout	<p>Defines the timeout (in seconds) for no key entry.</p> <p>If no key is pressed after the timeout, the digits will be sent out. The default value is 4 seconds.</p>
Key As Send	<p>Allows users to configure the “#” key as the “Send” key. If set to “Yes”, the “#” key will immediately dial out the input digits.</p> <p>In this case, this key is essentially equivalent to the “Send” key. If set to “No”, the “#” key is included as part of the dialing string.</p>
On Hold Reminder Tone	<p>If enabled, the user will hear 3 beeps as hold reminder, the first on hold reminder occurs at 1 min and the subsequent on hold reminder occurs every 30 sec. Default is “Disabled”.</p>
Call Recording On	<p>Configures the DTMF sequence sent when pressing the Record key during a call on this account.</p>
Call Recording Off	<p>Configures the DTMF sequence sent when pressing the Record key during a call on this account when turning recording off.</p>
Hide Dialing Password	<p>Allows user to hide the password when the dialing number matches the configured prefix.</p>
Remote Info Display	<p>Choose which caller information to display once receiving a call:</p> <ul style="list-style-type: none"> • Name and Number: Display the caller ID name and number. • Number: Display only the caller number. <p>Name: Display only the caller ID name.</p>
Hide Remote User ID	<p>Settings to allow user to hide and display name of remote user ID that has a length more than specific in the incoming and/or outgoing calls</p>
Ring Tone	
Account Ring Tone	<p>Configures ring tone for the account.</p>
Match Incoming Caller ID	<p>Specifies matching rules with number, pattern or Alert Info text. (Up to 10 rules). When the incoming caller ID or Alert Info matches the rule, the phone will ring with selected distinctive ringtone. Matching rules:</p> <ul style="list-style-type: none"> • <u>Specific caller ID number</u>. For example, 8321123; • <u>A defined pattern</u> with certain length using x and + to specify, where x could be any digit from 0 to 9. Samples:



	<p>xx+ : at least 2-digit number;</p> <p>xx : only 2-digit number;</p> <p>[345]xx: 3-digit number with the leading digit of 3, 4 or 5;</p> <p>[6-9]xx: 3-digit number with the leading digit from 6 to 9.</p> <ul style="list-style-type: none"> <u>Alert Info text</u> Users could configure the matching rule as certain text (e.g., priority) and select the custom ring tone mapped to it. The custom ring tone will be used if the phone receives SIP INVITE with Alert-Info header in the following format: <i>Alert-Info: <http://127.0.0.1>; info=priority</i> <p>Selects the distinctive ring tone for the matching rule. When the incoming caller ID or Alert Info matches the rule, the phone will ring with the selected ring.</p>
Ring Timeout	Defines the timeout (in seconds) for the rings on no answer. Default is 60.
Account x → Intercom Settings	
Allow Auto Answer by Call-Info/Alert-Info	If set to "Yes", the phone will automatically turn on the speaker phone to answer incoming calls after a short reminding beep, based on the SIP Call-Info/Alert-Info header sent from the server/proxy.
Mute on answer Intercom call	When enabled, phone will mute the incoming intercom call by Call-Info/Alert-Info
Play warning tone for Auto Answer Intercom	When enabled, phone will play warning tone when auto answer Intercom
Custom Alert-Info for Auto Answer	Used exclusively to match the contents of the Alert-Info header for auto answer. The default auto answer headers will not be matched if this is defined.
Account x → Feature Codes	
Enable Local Call Features	When enabled, Do Not Disturb, Call Forwarding and other call features can be used via the local feature codes on the phone. Otherwise, the provisioned feature codes from the server will be used. User configured feature codes will be used only if server provisioned feature codes are not provided.
Do Not Disturb (DND)—On	Configures DND feature code to turn on DND.
Do Not Disturb (DND)—Off	Configures DND feature code to turn off DND.



Call Forward Unconditionally(All)—On	Configures Call Forward All feature code to activate unconditional call forwarding.
Call Forward Unconditionally(All)—Off	Configures Call Forward All feature code to deactivate unconditional call Forwarding.
Target	Configures the extension that the call will be forwarded to.
Call Forward Busy—ON	Configures Call Forward Busy feature code to activate busy call forwarding.
Call Forward Busy—Off	Configures Call Forward Busy feature code to deactivate busy call forwarding.
Target	Configures the extension that the call will be forwarded to.
Call Forward Delayed (No Answer)—On	Configures Call Forward Delayed feature code to activate no answer call forwarding.
Call Forward Delayed (No Answer)—Off	Configures Call Forward Delayed feature code to deactivate no answer call forwarding.
Target	Configures the extension that the call will be forwarded to.
Delayed Call Forward Wait Time	Defines the timeout (in seconds) before the call is forwarded on no answer. Valid range is 1 to 120. Default is 20

Settings Page Definitions

Table 9: Settings Page Definitions

Settings → General Settings	
Local RTP Port	Defines the local RTP port used to listen and transmit. It is the base RTP port for channel 0. When configured, channel 0 will use this port _value for RTP; channel 1 will use port _value+2 for RTP. Local RTP port ranges from 1024 to 65400 and must be even. The default value is 5004.
Local RTP Port Range	This parameter defines the range of local RTP port from 48 to 10000.



Use Random Port	<p>When set to “Yes”, this parameter will force random generation of both the local SIP and RTP ports. This is usually necessary when multiple phones are behind the same full cone NAT. The default setting is “Yes”</p> <p>Note: This parameter must be set to “No” for Direct IP Calling to work</p>
Keep-alive Interval	<p>Specifies how often the phone sends a blank UDP packet to the SIP server in order to keep the “ping hole” on the NAT router to open. The default setting is 20 seconds.</p>
Use NAT IP	<p>The NAT IP address used in SIP/SDP messages. This field is blank at the default settings. It should ONLY be used if it’s required by your ITSP.</p>
STUN Server	<p>The IP address or Domain name of the STUN server. STUN resolution results are displayed in the STATUS page of the Web GUI. Only non-symmetric NAT routers work with STUN.</p>
Public Mode	<p>Configures to turn on/off public mode for hot Desking feature on the phone.</p> <p>If set to “Yes”, users would need fill in the SIP Server address for account 1 as well. Then reboot the phone. When the phone boots up, users will require entering SIP User ID and Password on the LCD to login and use the phone.</p> <p>Note: When the phone is in public mode login screen, press CONF button will have the IP address of the phone displayed.</p>
Enable Fix For RTP Timestamp Jump	<p>Make RTP timestamps be continuous, if there is audio loss caused by timestamp jump</p>
Test Password Strength	<p>Only Allow password with some constraints to ensure better security.</p>
DNS Cache Refresh Time	<p>The phone will send out DNS queries based on the configured DNS Cache Refresh Time after responding response to refresh IP addresses for SIP. Valid Range is [5 -1440] minutes. Default is 30.</p>
Settings → Call Features	
Onhook Dial Barging	<p>When the option is set to "Disabled", onhook dialing won't be interrupted by an incoming call.</p>
Off-hook Auto Dial	<p>Configures a User ID/extension to dial automatically when the phone is Offhook. The phone will use the first account to dial out.</p> <p>The default setting is “No”.</p>



Off-hook Auto Dial Delay	Defines the timeout (in seconds) for off-hook auto dial. Valid range is 0-30. If set to 0, it will be dialed out immediately; If set to other values, it will be dialed out after the delay.
Off-hook Timeout	If configured, when the phone is Onhook, it will go Offhook after the timeout (in seconds). The default value is 30 seconds.
Enable Live DialPad	If the Live DialPad is enabled, after dialing the numbers, the phone will wait for the time set in the expire time (in seconds) and dial out automatically after using handsfree mode.
Live DialPad Expire Time	Sets the Live DialPad expire time, interval is between 2s and 15s. The default value is 5s.
Busy Tone Expiration	Busy Tone Expiration (in seconds). The default value is 30 seconds.
Enable Automatic Redial	When the phone dials a number and no answer, if automatic redial is enabled, the phone will automatically redial this number.
Automatic Redial Times	The total times that need to be redial if Automatic Redial is enabled (in seconds). The default value is 10 seconds.
Automatic Redial Interval	The interval between each time redial if Automatic Redial is enabled (in seconds). The default value is 20 seconds.
Intercom Key Mode	Controls the behavior of the intercom hard key. Default setting is "Intercom".
Intercom User ID	Configures the intercom extension number for account 1 to dial out. This User ID is mapped to the INTERCOM button on the phone.
Intercom Multicast Paging Address	Defines the multicast address that will be broadcasted to when the key is set to multicast paging.
Intercom Multicast Paging Label	Determines the optional name to be displayed during the page.
Bypass Dial Plan through Call History and Directories	Enable/disable dial plan check while dialing through the call history and any phonebook directories.
Disable Call Waiting	Disables the call waiting feature. The default setting is "No".
Disable Call Waiting Tone	Disables the call waiting tone when call waiting is on. The default setting is "No".



Ring For Call Waiting	This option allows you to configure whether the speaker phone will ring when there is a new incoming call during an active call. If set to No, the user will hear call waiting tone. If set to Yes, the phone will ring using the speakerphone.
Disable Busy Tone on Remote Disconnect	Disable the busy tone heard in the handset when the call is disconnected remotely. The default setting is No .
Disable Direct IP Call	Disables Direct IP Call. The default setting is “No”.
Use Quick IP Call mode	When set to “Yes”, users can dial an IP address under the same LAN/VPN segment by entering the last octet in the IP address. To dial quick IP call, Offhook the phone and dial #XXX (X is 0-9 and XXX <=255), phone will make direct IP call to aaa.bbb.ccc.XXX where aaa.bbb.ccc comes from the local IP address REGARDLESS of subnet mask. #XX or #X are also valid so leading 0 is not required (but OK). No SIP server is required to make quick IP call. The default setting is “No”.
Disable Conference	Disables the Conference function. The default setting is “No”.
Disable in-call DTMF Display	When it’s set to “Yes”, the DTMF digits entered during the call will not display. The default setting is “No”.
Enable Sending DTMF via specific MPKs	Allows certain MPKs to send DTMF in-call. This option does not affect Dial DTMF.
Mute Key Functions While Idle	When set to “DND”, the DND will be enabled for future incoming call if pressing MUTE key in idle state; If this feature is set to “Idle Mute”, MUTE key will take effect in idle state and future incoming call will be answered with mute; Otherwise, MUTE key will not take effect in idle state.
Disable Transfer	Disables the Transfer function. The default setting is “No”.
In-call Dial Number on Pressing Transfer Key	Configures the number for the phone to dial as DTMF during the call using TRAN button.
Attended Transfer Mode	When “Attended Transfer Mode” is set to “Static”, only “Blind Transfer” softkey is available on the call screen. If set to “Dynamic”, both “Blind Transfer” and “Attended Transfer” softkeys are available.
Do Not Escape # as %23 in SIP URI	Specifies whether to replace # by %23 or not for some special situations. The default setting is “No”.



Use Pound (#) For Redial	If set to "Yes", the "#" key will immediately redial out the previous number. Default is Yes .
Click-To-Dial Feature	Enables Click-To-Dial feature. The default setting is "Disabled".
Call History Flash Writing: Write Timeout	Defines the interval (in seconds) to save the call history to phone's flash. The default value is 300 seconds.
Max Unsaved Log	Defines the number of unsaved logs before written to phone's flash. The default value is 200 entries.
User-Agent Prefix	Add a prefix in the User Agent field on the SIP header.
Predictive Dialing Feature	Allows the phone to use your dialed number and search the compatible numbers from history and contacts and will "Predict" the number you are going to dial when this feature is enabled. This saves time for the user so they won't need to dial the entire number every time they wanted to call the number. Default settings is Enabled .
Disable Hook Switch	User can Enable/Disable the Hook Switch as follows: When set to " Yes ", disable hook switch completely; When set to " For Answer Call ", hook switch cannot be used for answering call. Default is No .
Show SIP Error Response	Allows users to enable or disable SIP error response to be displayed on LCD. Default setting is Yes.
Auto Answer Delay	Configures the delay for the incoming call automatic answer. This option takes effect only if [Auto Answer] is enabled on the phone. Valid range is 0 to 10 (in seconds). Default is 0 .
Enable Enhanced Acoustic Echo Canceller	Allows user to choose to enable or disable the echo canceller on the phone in speaker mode. Default is Yes .
Show on Hold Duration	Show the duration of holding a call on the LCD. Default is No .
Hide/Disable reject key	When "Hide/Disable REJECT Key" is set to "Yes", the device will not display REJECT softkey upon incoming call. Default is No .
Enable Diversion Information Display	When set to " Yes " (Default), Diversion info will be displayed if the device receives INVITE with Diversion header.



Settings → Multicast paging	
Paging Barge	During active call if incoming multicast page's priority is higher than this value, the call will be held and multicast page will be played.
Paging Priority Active	If enabled, during a multicast page if another multicast is received with higher priority, that one will be played instead.
Multicast Paging Codec	The codec for sending multicast pages, there are 7 codecs could be used: PCMU, PCMA, G.723.1, G.726-32, G.729A/B, G.722(wide band), and iLBC. The default setting is "PCMU".
Multicast Channel Number	Multicast Channel Number (0-50). 0 for normal RTP packets, 1-50 for Polycom multicast format packets.
Multicast Sender ID	Outgoing caller ID that displays to your page group recipients (for multicast channel 1 - 50).
Multicast Listening	Defines multicast listening addresses and labels. GXP16xx phone can listen to at most 10 multicasts addresses with different priorities.

Settings → Preferences → Audio Control	
Headset Key Mode	<p>When headset is connected to the phone, users could use the HEADSET button in "Default Mode" or "Toggle Headset/Speaker".</p> <ul style="list-style-type: none"> • Default Mode: <ul style="list-style-type: none"> ➢ When the phone is in idle, press HEADSET button to off hook the phone and make calls by using headset. Headset icon will display on the screen in dialing/talking status. ➢ When there is an incoming call, press HEADSET button to pick up the call using headset. ➢ When there is an active call using headset, press HEADSET button to hang up the call. ➢ When Speaker/Handset is being used in dialing/talking status, press HEADSET button to switch to headset. Press it again to hang up the call. Or press speaker/Handset to switch back to the previous mode. • Toggle Headset/Speaker: <ul style="list-style-type: none"> ➢ When the phone is in idle, press HEADSET button to switch to Headset mode. The headset icon will display on the left side of the screen.



	<ul style="list-style-type: none"> ➤ In this mode, if pressing Speaker button or Line key to off hook the phone, headset will be used. ➤ When there is an active call, press HEADSET button to toggle between Headset and Speaker.
Headset Type	Selects whether the connected headset is normal RJ11 headset, Plantronics EHS headset.
Always Ring Speaker	Configures to enable or disable the speaker to ring when headset is used on "Toggle Headset/Speaker" mode. If set to "Yes", when the phone is in Headset "Toggle Headset/Speaker" mode, both headset and speaker will ring on incoming call. The default setting is "No".
Enable Group Listening	Allow handset to be able to listen when picked up during a call with headset
Group Listening with Speaker	If enabled, during a call, the phone will display softkey to enable speaker listening along with handset or headset.
Headset TX gain	Configures the transmission gain of the headset. The default value is 0dB.
Headset RX gain	Configures the receiving gain of the headset. The default value is 0dB.
Handset TX gain	Configures the transmission gain of the handset. The default value is 0dB.
Settings → Preferences → Date and Time	
NTP Server	Defines the URL or IP address of the NTP server. The phone may obtain the date and time from the server.
Allow DHCP Option 42 Override NTP Server	Defines whether DHCP Option 42 should override NTP server or not. When enabled, DHCP Option 42 will override the NTP server if it's set up on the LAN. The default setting is "Yes".
Time Zone	Configures date/time used on the phone according to the specified time zone.
Self-Defined Time Zone	<p>This parameter allows the users to define their own time zone. The syntax is: std offset dst [offset], start [/time], end [/time] Default is set to: MTZ+6MDT+5,M4.1.0,M11.1.0</p> <p>MTZ+6MDT+5</p> <p>This indicates a time zone with 6 hours offset with 1 hour ahead which is U.S central time. If it is positive (+) if the local time zone is west of the Prime Meridian (A.K.A: International or Greenwich Meridian) and negative (-) if it is east.</p>



	<p>M4.1.0,M11.1.0</p> <p>The 1st number indicates Month: 1,2,3,...,12 (for Jan, Feb, ..., Dec)</p> <p>The 2nd number indicates the nth iteration of the weekday: (1st Sunday, 3rdTuesday...)</p> <p>The 3rd number indicates weekday: 0,1,2,...,6(for Sun, Mon, Tues,... ,Sat)</p> <p>Therefore, this example is the DST, which starts from the First Sunday of April to the 1st Sunday of November.</p>
Date Display Format	<p>Configures the date display format on the LCD.</p> <p>The following formats are supported:</p> <ul style="list-style-type: none"> • yyyy-mm-dd: 2012-07-02 • mm-dd-yyyy: 07-02-2012 • dd-mm-yyyy: 02-07-2012 • dddd, MMMM dd: Friday, October 12 • MMMM dd, dddd: October 12, Friday
Time Display Format	<p>Configures the time display in 12-hour or 24-hour format on the LCD.</p> <p>The default setting is in 12-hour format.</p>
Settings → Preferences → LCD Display	
Backlight Brightness: Active	<p>Configures the LCD backlight brightness level (from 0 to 8) for phone's active status. The default value is 6.</p> <p>Note: This option is not applicable to GXP1610/GXP1615.</p>
Backlight Brightness: Idle	<p>Configures the LCD backlight brightness level (from 0 to 8) for phone's idle status. The default value is 2.</p> <p>Note: This option is not applicable to GXP1610/GXP1615.</p>
Active Backlight Timeout	<p>Configure the minute of active backlight timeout. The valid range is 0 to 90.</p> <p>When Active Backlight Timeout is set to 0, the backlight will be constantly on.</p>
LCD Contrast	<p>Configures the LCD contrast level (from 1 to 5). The default value is 3.</p>
Disable Missed Call Backlight	<p>When it's set to "Yes", the LCD backlight will not be turned on when there is a new missed call. The default setting is "No".</p> <p>Note: This option is not applicable to GXP1610/GXP1615.</p>
Wide Idle Screen View	<p>Allows to remove the date and moves the notification icons to the right for a longer account name display when enabled. The default setting is "No".</p> <p>Note: This feature needs a reboot to take effect.</p>



Caller ID Display Mode	<p>Users can configure “Caller ID Display Mode” to control the caller ID display preference:</p> <ul style="list-style-type: none"> • Dynamic (Default): If the caller ID is long, it will keep scrolling until it's displayed completed. • Static: The caller ID will not scroll.
Settings → Preferences → LED Control	
Enable / Disable VM/MSG Power Light Flash	<p>This option controls the LED behavior upon new/unread Voicemail and Message.</p> <p>If set to “No”, the LED light will be flashing when there is unread Voicemail and Message. Otherwise, it will be off.</p>
Settings → Preferences → Ring Tone	
Call Progresses Tones: <ul style="list-style-type: none"> • System Ring Tone • Dial Tone • Second Dial Tone • Message Waiting • Ring Back Tone • Call-Waiting Tone • Busy Tone • Reorder Tone 	<p>Configures ring or tone frequencies based on parameters from local telecom. The default value is North American standard. Frequencies should be configured with known values to avoid uncomfortable high pitch sounds.</p> <p>Syntax: f1=val,f2=val[,c=on1/off1[-on2/off2[-on3/off3]]];</p> <p>(Frequencies are in Hz and cadence on and off are in 10ms)</p> <p>ON is the period of ringing (“On time” in ‘ms’) while OFF is the period of silence. To set a continuous ring, OFF should be zero. Otherwise it will ring ON ms and a pause of OFF ms and then repeat the pattern. Up to three cadences are supported.</p>
Call Waiting Tone Gain	<p>Configures the call waiting tone gain to adjust call waiting tone volume. The default is “Low”.</p>
Speaker Ring Volume	<p>Configures speaker ring volume. The valid range is 0 to 7.</p>
Notification tone volume	<p>This option allows you to adjust the volume for paging, intercom, auto answer call and call hold reminder beep. The valid range is 0 to 7.</p>
Lock Speaker Volume	<p>Locks the volume of the phone’s ring tone. When set to “Yes”, the volume buttons on the phone will be disabled during ringing. Default settings is “No”.</p>

Default Ringtone	<p>Allows to set the Default Ringtone to be used globally. Up to 10 custom ringtones are supported.</p> <p>Note: The ring tone set in individual accounts has a higher priority than this setting. If the user wants the default ring tone to be used globally, he needs to set the ring tone of each account to Default Ring Tone; Otherwise, the one specified for each account will be used instead.</p>
Total Number of Custom Ringtone Update	<p>Configures the total number of custom ringtone update that can be downloaded during provisioning process. Valid range 0-10. Default value is 3.</p>
Settings → Web Service	
Use Auto Location Service	<p>To enable or disable auto location services on the phone (Reboot required). Default settings is Yes.</p>
Settings → XML Applications	
Idle Screen	
Idle Screen XML Download	<p>Configures to enable idle screen XML download. Users could select HTTP/HTTPS/TFTP to download the XML idle screen file. Default setting is No.</p>
Download Screen XML At Boot-up	<p>If set to "Yes", the idle screen XML file will be downloaded when the phone boots up.</p> <p>The default setting is "No".</p>
Use Custom Filename	<p>Specifies the custom file for the idle screen XML file to be downloaded.</p>
Idle Screen XML Server Path	<p>Configures the server path to download the idle screen XML file.</p> <p>This field could be IP address or URL, with up to 256 characters.</p>
XML Application	
Server Path	<p>Configures the server path to download the idle screen XML file.</p> <p>This field could be IP address or URL, with up to 256 characters.</p>
Softkey Label	<p>Specifies the Softkey name displayed on the idle screen for the users to enter XML application.</p> <p>The default Softkey Label is "XML Service".</p>



Settings → Programmable Keys → Multi-Purpose Keys Settings

Transfer Mode via MPK	Perform blind transfer, attended transfer, or a new call with the specific in the Value field when a user presses "Transfer" multiple-purpose key.
Enable Transfer via non-Transfer MPK	MPK with type BLF, Speed dial, etc, will perform similar to "transfer MPK" under active call.

Settings → Programmable Keys → Programmable Keys

Line Key X	<p>Assigns a function to the corresponding line key. The key mode options are:</p> <ul style="list-style-type: none"> • Line Regular line key to open up a line and switch line. The Value field can be left blank. • Shared Line Share line for Shared Line Appearance feature. Select the Account registered as Shared line for the line key. The Value field can be left blank. • Speed Dial Select the Account to dial from. And enter the Speed Dial number in the Value field to be dialed. • Speed Dial via active account Similar to Speed Dial but it will dial based on the current active account. For example, if the phone is off hook and account 2 is active, it will call the configured Speed Dial number using account 2. • Busy Lamp Field (BLF) Select the Account to monitor the BLF status. Enter the extension number in the Value field to be monitored. (Supported only on GXP1628/GXP1630) • Eventlist BLF This option is similar to the BLF option but in this case the PBX collects the information from the phones and sends it out in one single notify message. PBX server has to support this feature. (Supported only on GXP1628/GXP1630) • Presence Watcher This option has to be supported by a presence server and it is tied to the "Do Not Disturb" status of the phone's extension. (Supported only on GXP1628/GXP1630)
-------------------	--



- **Dial DTMF**
Enter a series of DTMF digits in the Value field to be dialed during the call. "Enable MPK Sending DTMF" has to be set to "Yes" first.
- **Voice Mail**
Select Account and enter the Voice Mail access number in the Value field.
- **Call Return**
The last answered calls can be dialed out by using Call Return. The Value field should be left blank. Also, this option is not binding to the account and the call will be returned based on the account with the last answered call.
- **Transfer**
Select Account and enter the number in the Value field to be transferred (blind transfer) during the call.
- **Call Park**
Select Account and enter the call park extension in the Value field to park/pick up the call. (Supported only on GXP1628/GXP1630)
- **Intercom**
Select Account, and enter the extension number in the Value field to do the intercom.
- **LDAP Search**
This option is to narrow the LDAP search scope. Enter the LDAP search base in the Name field. It could be the same or different from the Base in LDAP configuration under Advanced Settings. The Base in LDAP configuration will be used if the Name field is left blank. Enter the LDAP Name/Number filter in the Value field.
LDAP search does not support entering Non-ASCII characters
- **Multicast Paging**
This option is for multicast sending.

Enter Line key description in Description field and multicast sending address in Value field.
- **GDS OpenDoor**
This option is for opening the door via GDS, when the phone is in idle stage and MPK configured is pressed.



	<p>Notes : The device needs to have GDS open door setting configured under device web UI→ Settings →External Service</p> <p>- the GDS device must be properly configured such as enabling “Remote PIN To Open Door” under GDS web UI → Door System Settings → Basic Settings.</p> <ul style="list-style-type: none"> • Provision Select this feature in order to make the phone trigger an instant provisioning.
Softkeys	<p>Assigns a function to the corresponding Softkey. The key mode options are:</p> <ul style="list-style-type: none"> • Speed Dial Select the Account to dial from. And enter the Speed Dial number in the Value field to be dialed. • Speed Dial via active account Similar to Speed Dial but it will dial based on the current active account. For example, if the phone is off hook and account 2 is active, it will call the configured Speed Dial number using account 2. • Voice Mail Select Account and enter the Voice Mail access number in the Value field. • Call Return The last answered calls can be dialed out by using Call Return. The Value field should be left blank. Also, this option is not binding to the account and the call will be returned based on the account with the last answered call. • Intercom Select Account, and enter the extension number in the Value field to do the intercom. • LDAP Search This option is to narrow the LDAP search scope. Enter the LDAP search base in the Name field. It could be the same or different from the Base in LDAP configuration under Advanced Settings. The Base in LDAP configuration will be used if the Name field is left blank. Enter the LDAP Name/Number filter in the Value field. LDAP search does not support entering Non-ASCII characters



**Multi-Purpose Keys
(GXP1628/GXP1630
only)**

Assigns a function to the corresponding Multi-Purpose Key.

The key mode options are:

- **Line**
Regular line key to open up a line and switch line. The Value field can be left blank.
- **Shared Line**
Share line for Shared Line Appearance feature. Select the Account registered as Shared line for the line key. The Value field can be left blank.
- **Speed Dial**
Select the Account to dial from. And enter the Speed Dial number in the Value field to be dialed.
- **Speed Dial via active account**
Similar to Speed Dial but it will dial based on the current active account. For example, if the phone is off hook and account 2 is active, it will call the configured Speed Dial number using account 2.
- **Busy Lamp Field (BLF)**
Select the Account to monitor the BLF status. Enter the extension number in the Value field to be monitored.
- **Eventlist BLF**
This option is similar to the BLF option but in this case the PBX collects the information from the phones and sends it out in one single notify message. PBX server has to support this feature.
- **Presence Watcher**
This option has to be supported by a presence server and it is tied to the "Do Not Disturb" status of the phone's extension.
- **Dial DTMF**
Enter a series of DTMF digits in the Value field to be dialed during the call. "Enable MPK Sending DTMF" has to be set to "Yes" first.
- **Voice Mail**
Select Account and enter the Voice Mail access number in the Value field.
- **Call Return**
The last answered calls can be dialed out by using Call Return. The Value field should be left blank. Also, this option is not binding to the account and



	<p>the call will be returned based on the account with the last answered call.</p> <ul style="list-style-type: none"> Transfer Select Account and enter the number in the Value field to be transferred (blind transfer) during the call. Call Park Select Account and enter the call park extension in the Value field to park/pick up the call. Intercom Select Account and enter extension number in Value field to intercom. LDAP Search This option is to narrow the LDAP search scope. Enter the LDAP search base in the Name field. It could be the same or different from the Base in LDAP configuration under Advanced Settings. The Base in LDAP configuration will be used if the Name field is left blank. Enter the LDAP Name/Number filter in the Value field. LDAP search does not support entering Non-ASCII characters Multicast Paging This option is for multicast sending. Enter Line key description in Description field and multicast sending address in Value field. Provision Select this feature in order to make the phone trigger an instant provisioning.
--	--

Settings → Programmable Keys → Softkeys Settings

Softkey Layout	<p>Custom Softkey Layout Enables/ Disables the custom Softkey layout. Default is Disabled</p>
Idle Screen Softkey Layout	<p>Hide System Softkey on Idle Page Users can choose a system generated softkey to hide on idle page. Forward is checked by default.</p>
Custom Call Screen Softkey Layout	<ul style="list-style-type: none"> Dialing State Custom softkey layout when device is under DIALING state. Available softkeys: EndCall, Redial, Backspace, Dial, Clear. Onhook Dialing State Custom softkey layout when device is under ONHOOK DIALING state.



Available softkeys: Answer, Reject, Forward, Dial, Backspace, Cancel.

- **Ringing State**

Custom softkey layout when device is under RINGING state.

Available softkeys: Answer, Reject, Forward.

- **Calling State**

Custom softkey layout when device is under CALLING state.

Available softkeys: Answer, Reject, Forward, EndCall.

- **Call Connected State**

Custom softkey layout when device is under CALL CONNECTED state.

Available softkeys: Record On/Off(UCM), CallPark (UCM), ParkedCalls, Answer, Answer, Reject, Forward, EndCall, PrivateHold.

- **Conference Connected State**

Custom softkey layout when device is under CONFERENCE CONNECTED state.

Available softkeys: Record On/Off(UCM), ParkedCalls, Answer, Reject, EndCall.

- **On Hold State**

Custom softkey layout when device is under ON HOLD state.

Available softkeys: ParkedCalls, ReConf.

- **Call Failed State**

Custom softkey layout when device is under CALL FAILED state.

Available softkeys: EndCalls, ReConf

- **Transfer State**

Custom softkey layout when device is under TRANSFER state.

Available softkeys: Cancel, Backspace, BlindTrnf, AttTrnf

- **Conference State**

Custom softkey layout when device is under CONFERENCE state.

Available softkeys: Cancel, Backspace.



Settings → Broadsoft XSI

<p>XSI</p>	<p>XSI</p> <ul style="list-style-type: none"> • Server Defines Broadsoft XSI server address with protocol. • Port Defines the port of XSI Server. • XSI Actions Path Configures the deployment path for Broadsoft XSI Actions. If it is empty, the path “com.broadsoft.xsi-actions” will be used. • Broadsoft Contact Download Interval Defines the interval for update Broadsoft contacts. • XSI Authentication Type. Specify preferred XSI authentication type: Login credentials, SIP credentials, or using credentials from registered accounts. <p>Login Credentials</p> <ul style="list-style-type: none"> • Login Username Username for Broadsoft XSI server • Login Password Password for Broadsoft XSI server Note : The users can enter login credentials through LCD for Broadsoft Directories. <p>SIP Credentials</p> <ul style="list-style-type: none"> • SIP Username SIP username for Broadsoft XSI server • SIP User ID SIP user ID for Broadsoft XSI server • SIP Password SIP password for Broadsoft XSI server <p>Sort Phonebook by: Allows users to sort the Broadsoft Phone search based on the selection of first name or last name. Default setting is “Last Name”.</p>
<p>Network Directories</p>	<p>Enable/Disable Broadsoft Network directories and defines the directory name. The directory types are:</p>



	<ul style="list-style-type: none"> • Group Directory • Enterprise Directory • Group Common • Enterprise Common • Personal Directory • Missed Call Log • Placed Call Log • Received Call Log
--	---

Settings → External Service

Grandstream Door System	<p>Connect to a GDS37XX and send OpenDoor request.</p> <ul style="list-style-type: none"> • Account The account to be used on the phone to interact with the GDS37XX. • System Identification A name or a number to identify the GDS37XX. • System Number The SIP extension or the IP address of the GDS37XX depending on the deployed scenario, Peering or Registration. • Access Password The password set on the GDS37XX to unlock the door. <p>Notes:</p> <ul style="list-style-type: none"> - When using Peering scenario, on “System Number” field of the GXP16XX specify the IP address of the peered GDS37XX. - When using Registration scenario and both GXP16XX and GDS37XX are registered on the same SIP server, specify the SIP extension of the GDS37XX on “System Number” field on GXP16XX. - The “Access Password” on GXP16XX should be matching “Remote PIN to Open the door” on GDS37XX.
--------------------------------	--

Network Page Definitions

Table 10: Network Page Definitions

Network → Basic Settings

Internet Protocol	<p>Selects one of the following IP protocol modes:</p> <ul style="list-style-type: none"> • IPv4 Only: Enforce IPv4 protocol only. • IPv6 Only: Enforce IPv6 protocol only.
--------------------------	---



	<ul style="list-style-type: none"> • Both, Prefer IPv4: Enable both IPv4 and IPv6 and prefer IPv4. • Both, prefer IPv6: Enable both IPv4 and IPv6 and prefer IPv6. <p>Note: Make sure to reboot the phone for the changes to take effect.</p>
IPv4 Address	<p>Allows users to configure the appropriate network settings on the phone to obtain IPv4 address. Users could select "DHCP", "Static IP" or "PPPoE".</p> <p>By default, it is set to "DHCP".</p>
Host name (Option 12)	<p>Specifies the name of the client, added for the DHCP INFORM using Option 12. This field is optional but may be required by some Internet Service Providers.</p>
Vendor Class ID (Option 60)	<p>Used by clients and servers to exchange vendor class ID.</p>
PPPoE Account ID	<p>Enter the PPPoE account ID.</p>
PPPoE Password	<p>Enter the PPPoE Password.</p>
PPPoE Service Name	<p>Enter the PPPoE Service Name.</p>
IPv4 Address	<p>Enter the IP address when static IP is used.</p>
Subnet Mask	<p>Enter the Subnet Mask when static IP is used for IPv4.</p>
Gateway	<p>Enter the Default Gateway when static IP is used for IPv4.</p>
DNS Server 1	<p>Enter the DNS Server 1 when static IP is used for IPv4.</p>
DNS Server 2	<p>Enter the DNS Server 2 when static IP is used for IPv4.</p>
Preferred DNS Server	<p>Enter the Preferred DNS Server for IPv4.</p>
IPv6 Address	<p>Allows users to configure the appropriate network settings on the phone to obtain IPv6 address.</p> <p>Users could select "Auto-configured" or "Statically configured" for the IPv6 address type.</p>
Static IPv6 Address	<p>Enter the static IPv6 address when Full Static is used in "Statically configured" IPv6 address type.</p>
IPv6 Prefix Length	<p>Enter the IPv6 prefix length when Full Static is used in "Statically configured" IPv6 address type.</p>



IPv6 Prefix (64 bits)	Enter the IPv6 Prefix (64 bits) when Prefix Static is used in "Statically configured" IPv6 address type.
DNS Server 1	Enter the DNS Server 1 for IPv6.
DNS Server 2	Enter the DNS Server 2 for IPv6.
Preferred DNS server	Enter the Preferred DNS Server for IPv6.

Network → Advanced Settings

802.1X mode	Allows the user to enable/disable 802.1X mode on the phone. The default value is disabled. It can be set to EAP-MD5, EAP-TLS or EAP-PEAPv0/MSCHAPv2.
802.1X Identity	Enter the Identity for the 802.1X mode.
MD5 Password	Enter the MD5 Password for the 802.1X mode. Note: the use of special characters is supported.
802.1X CA Certificate	Upload 802.1X CA certificate to the phone; or delete existed 802.1X CA certificate from the phone.
802.1X Client Certificate	Upload 802.1X Client certificate to the phone; or delete existed 802.1X Client certificate from the phone.
HTTP Proxy	Specifies the HTTP proxy URL for the phone to send packets to. The proxy server will act as an intermediary to route the packets to the destination.
HTTPS Proxy	Specifies the HTTPS proxy URL for the phone to send packets to. The proxy server will act as an intermediary to route the packets to the destination.
Layer 3 QoS for SIP	Defines the Layer 3 QoS parameter for SIP. This value is used for IP Precedence, Diff-Serv or MPLS. The default value is 26.
Layer 3 QoS for RTP	Defines the Layer 3 QoS parameter for RTP. This value is used for IP Precedence, Diff-Serv or MPLS. The default value is 46.
Enable DHCP VLAN	Enables VLAN settings auto-configuration using DHCP options 132 & 133 tunneled through DHCP Option 43.
Layer 2 QoS 802.1Q/VLAN Tag	Assigns the VLAN Tag of the Layer 2 QoS packets. The default value is 0.
Layer 2 QoS 802.1p	Assigns the priority value of the Layer2 QoS packets. The default value is 0.



Priority Value	
PC Port Mode	Configures the PC port mode. When set to "Mirrored", the traffic in the LAN port will go through PC port as well and packets can be captured by connecting a PC to the PC port. The default setting is "Enable".
PC Port VLAN Tag	Assigns the VLAN Tag of the PC port.
PC Port Priority Value	Assigns the priority value of the PC port.
Enable CDP	Allows users to enable/disable CDP feature which will allow the phone to receive CDP packets from the uplink. Default is Enabled . Note: When CDP feature is enabled, make sure VLAN is also configured accordingly. It will need reboot to take effect for both enabling/disabling.
Enable LLDP	Users can Enable/Disable the LLDP (Link Layer Discovery Protocol) service to advertise information about the phone to other devices on the network. Default is Enabled .
Maximum Transmission Unit (MTU)	Defines the Maximum Transmission Unit value (MTU) in bytes. Default is 1500.
Network → Remote Control	
CSTA Control	Indicates whether CSTA Control feature is enabled. Change of this configuration will need the system reboot to make it take effect.
Network → Open VPN® Settings	
OpenVPN® Enable	Enables/Disables the OpenVPN® feature. Default settings is No .
OpenVPN® Server Address	Configures the address of the OpenVPN® server.
OpenVPN® Port	Defines the port of the OpenVPN® server. Default is 1194 .
OpenVPN® Transport	Determines network protocol UDP or TCP used for OpenVPN®. Default is UDP .
OpenVPN® CA	Uploads the OpenVPN® CA.
OpenVPN® Certificate	Uploads the OpenVPN® Certificate.
OpenVPN® Client Key	Uploads the OpenVPN® Client Key.
OpenVPN® Cipher	Must be the same cipher method used by the OpenVPN® server



Method	
OpenVPN® Username	OpenVPN® authentication username (optional)
OpenVPN® Password	OpenVPN® authentication password (optional)
Network → SNMP Settings	
Enable SNMP	Enable/Disable SNMP service. Default is No .
Version	Choose between (Version 1, Version 2, or Version 3).
Port	Listening Port of SNMP daemon (Default 161).
SNMP Trap IP	IP address of trap destination.
SNMP Trap port	Port of Trap destination (Default 162)
SNMP Trap Interval	Time interval between traps (Default is 5).
SNMP Trap Version	Choose between (Version 1, Version 2).
Community	Name of SNMPv1/v2c community.
SNMP Trap Community	Name of SNMPv1/v2c trap community.
SNMP Username	User name for SNMPv3.
Security Level	<p>noAuthUser: Users with security level noAuthnoPriv and context name as noAuth.</p> <p>AuthUser: Users with security level authNoPriv and context name as auth.</p> <p>privUser : Users with security level authPriv and context name as priv.</p>
Authentication Protocol	Select the Authentication Protocol: "None" or "MD5" or "SHA."
Privacy Protocol	Select the Privacy Protocol: "None" or "AES/AES128" or "DES".
Authentication Key	Enter the Authentication Key.
Privacy Key	Enter the Privacy Key.
SNMP Trap Username	User name for SNMPv3 Trap.



Trap Security Level	noAuthUser: Users with security level noAuthnoPriv and context name as noAuth. authUser: Users with security level authNoPriv and context name as auth. privUser: Users with security level authPriv and context name as priv.
Trap Authentication Protocol	Select the Authentication Protocol: "None" or "MD5" or "SHA".
Trap Privacy Protocol	Select the Privacy Protocol: "None" or "AES/AES128" or "DES".
Trap Authentication Key	Enter the Trap Authentication Key.
Trap Privacy Key	Enter the Trap Privacy Key.

Maintenance Page Definitions

Table 11: Maintenance Page Definitions

Maintenance → Web Access	
New Password	Allows the administrator to set the password for user-level web GUI access. This field is case sensitive with a maximum length of 30 characters.
Confirm Password	Confirms the end user password field to be the same as above.
Current Password	Determines the current password which is required to set a new admin password.
New Password	Allows users to change the admin password. The password field is purposely hidden for security purpose. This field is case sensitive with a maximum length of 30 characters.
Confirm Password	Confirms the admin password field to be the same as above.
Maintenance → Upgrade and Provisioning	
Firmware Upgrade and Provisioning	Specifies how firmware upgrading and provisioning request to be sent: Always Check for New Firmware, Check New Firmware only when F/W pre/suffix changes, Always Skip the Firmware Check.
Always Authenticate Before Challenge	Only applies to HTTP/HTTPS. If enabled, the phone will send credentials before being challenged by the server.
Validate Hostname in	To validate the hostname in the SSL certificate.



Certificate	
Allow DHCP Option 43 and Option 66 to Override Server	<p>Default setting is “Yes”. DHCP option 66 originally was only designed for TFTP server. And then was extended to support an HTTP URL. GXP phones support both TFTP and HTTP server via option 66. Users can also use DHCP option 43 vendor specific option to do this. DHCP option 43 approach has priorities.</p> <p>Note: Users should include http:// on the IP address or the URL of DHCP option 66 on the server if they want to use an http server. If the URL/IP is without a scheme (protocol) the phone adds tftp:// by default. If the URL/IP includes tftp://, the phone will not add tftp:// and use the URL/IP as it is.</p>
Additional Override DHCP option	<p>Additional DHCP Option that will be used as a firmware server instead of the setting one or name server from option 43 and 66. However, this option will be effective only when option 'Allow DHCP Option 43 and Option 66 to Override Server' is enabled, the options are 150 and 160.</p>
Allow DHCP Option 120 to override SIP Server	<p>Enables DHCP Option 120 from local server to override the SIP Server on the phone. The default setting is "No".</p>
3CX Auto Provision	<p>Enables automatic provisioning using PnP. If enabled, the phone will start sending a SIP SUBSCRIBE message to a multicast IP address 224.0.1.75 at boot up.</p> <p>The phone should receive response message 200 or 500 from the server, followed by a SIP NOTIFY including URL from where to download configuration file to get provisioned. The default setting is “Yes” (Enabled).</p>
Automatic Upgrade	<p>Enables automatic upgrade and provisioning. The default setting is "No".</p>
Hour of the Day (0-23)	<p>Defines the hour of the day to check the HTTP/TFTP server for firmware upgrades or configuration files changes. The default value is 1.</p>
Day of the Week (0-6)	<p>Defines the day of the week to check HTTP/TFTP server for firmware upgrades or configuration files changes. The default value is 1.</p>
Disable SIP NOTIFY Authentication	<p>Device will not challenge NOTIFY with 401 when set to Yes.</p>
Firmware Upgrade Confirmation	<p>Allow users to automatically upgrade to the version that the server has provided without need to confirm the upgrade to avoid end users manually select no when doing mass upgrade. When set to “Yes”, the phone will ask the user to upgrade. Default setting is “Yes”.</p>



Provision	Click Start to trigger the Provision request.
Config Upgrade Via	Selects firmware upgrade/provisioning method: TFTP, HTTP, HTTPS, FTP, or FTPS. Default is HTTPS.
Config Server Path	Defines the server path for provisioning. It could be different from the firmware server for upgrading.
Config HTTP/HTTPS User Name	The user name for the HTTP/HTTPS server (configuration file).
Config HTTP/HTTPS Password	The password for the HTTP/HTTPS server (configuration file).
Config File Prefix	This field enables user to store different configuration files in one single directory on the configuration server. If configured, only the configuration file with the matching prefix will be downloaded.
Config File Postfix	This field enables user to store different configuration files in one single directory on the configuration server. If configured, only the configuration file with the matching postfix will be downloaded.
XML Config File Password	The password for encrypt/decrypt the XML configuration file using OpenSSL.
Authentication Conf File	Sets the phone system to authenticate configuration file before applying it. When set to “Yes”, the configuration file must include value P1 with phone system’s administration password. If it is missed or does not match the password, the phone system will not apply it. Default setting is “No”.
Download Device Configuration	User can press the “Download” button to export the device’s configuration file. The configuration file is named as “config.txt”.
Upload Device Configuration	User can press the “Upload” button to upload configuration files to the phone.
Firmware Upgrade Via	Allows users to choose the firmware upgrade method: TFTP, HTTP, FTP/FTPS or HTTPS for firmware file download.
Firmware Server Path	Defines the server path for the firmware server. It could be different from the configuration server for provisioning.
Firmware HTTP/HTTPS User Name	The user name for the HTTP/HTTPS server (Firmware file).
Firmware HTTP/HTTPS Password	The password for the HTTP/HTTPS server (Firmware file).



Password	
Firmware File Prefix	This field enables user to store different firmware files in one single directory on the firmware server. If configured, only the firmware file with the matching prefix will be downloaded.
Firmware File Postfix	This field enables user to store different firmware files in one single directory on the firmware server. If configured, only the firmware file with the matching postfix will be downloaded.
Maintenance → Syslog	
Syslog Protocol	Choose whether to send syslog messages over UDP or secured SSL/TLS connection. Default is UDP. Notes: <ul style="list-style-type: none"> User can upload the CA file under Maintenance→Security settings. A reboot is required in order for the changes to take effect.
Syslog Server	The URL or IP address of the syslog server for the phone to send syslog to. Note: By adding port number to the Syslog server field (i.e 172.18.1.1:1000), the phone will send syslog to the corresponding port of that IP.
Syslog Level	Selects the level of logging for syslog. The default setting is "None". There are 4 levels: DEBUG, INFO, WARNING and ERROR. Syslog messages are sent based on the following events: <ul style="list-style-type: none"> product model/version on boot up (INFO level); NAT related info (INFO level); sent or received SIP message (DEBUG level); SIP message summary (INFO level); inbound and outbound calls (INFO level); registration status change (INFO level); negotiated codec (INFO level); Ethernet link up (INFO level); SLIC chip exception (WARNING and ERROR levels); Memory exception (ERROR level). Note: Syslog messages includes also MAC address and firmware version.



Syslog Keyword Filtering	Configures syslog message to be filtered based on keywords provided. If multiple keywords are filled, it should be separated by “;”. Note: No spaces allowed.
Send SIP Log	Configures whether the SIP log will be included in the syslog messages or not. The default setting is "No".
Maintenance → Language	
Display Language	Selects display language on the phone.
Language File Postfix	Specifies the language file postfix for downloaded language.
Maintenance → Action URL	
Setup Completed	Specifies action URL for signal to be sending out when phone finished setting up processes.
Registered	Specifies action URL for signal to be sending out when phone successfully registered.
Unregistered	Specifies action URL for signal to be sending out when phone successfully unregistered SIP account.
Register Failed	Specifies action URL for signal to be sending out when the IP phone fails to register a SIP account.
Off Hook	Specifies action URL for signal to be sending out when phone is in off-hook state.
On Hook	Specifies action URL for signal to be sending out when phone is in on-hook state.
Incoming Call	Specifies action URL for signal to be sending out when phone received the incoming call.
Outgoing Call	Specifies action URL for signal to be sending out when phone make an outbound call.
Missed Call	Specifies action URL for signal to be sending out when phone missed a call.
Answered Call	Specifies action URL for signal to be sending out when phone answered a call.
Rejected Call	Specifies action URL for signal to be sending out when phone rejected a call.



Forwarded Call	Specifies action URL for signal to be sending out when phone forwarded a call.
Established Call	Specifies action URL for signal to be sending out when phone established a call.
Terminated Call	Specifies action URL for signal to be sending out when phone terminated a call.
Idle to Busy	Specifies action URL for signal to be sending out when phone changes from idle to busy.
Busy to Idle	Specifies action URL for signal to be sending out when phone changes from busy to idle.
Open DND	Specifies action URL for signal to be sending out when Do Not Disturb mode is enabled.
Close DND	Specifies action URL for signal to be sending out when Do Not Disturb mode is disabled.
Open Forward	Specifies action URL for signal to be sending out when forwarding is enabled.
Close Forward	Specifies action URL for signal to be sending out when forwarding is disabled.
Open Unconditional Forward	Specifies action URL for signal to be sending out when phone disables call unconditional forward option.
Close Unconditional Forward	Specifies action URL for signal to be sending out when phone enables call unconditional forward option.
Open Busy Forward	Specifies action URL for signal to be sending out when phone enables call busy forward option.
Close Busy Forward	Specifies action URL for signal to be sending out when phone disables call busy forward option.
Open No Answer Forward	Specifies action URL for signal to be sending out when phone enables call no answer forward option.
Close No Answer Forward	Specifies action URL for signal to be sending out when phone disables call no answer forward option.
Blind Transfer	Specifies action URL for signal to be sending out when phone performed a blind transfer.
Attended Transfer	Specifies action URL for signal to be sending out when phone performed an



	attended transfer.
Transfer Finished	Specifies action URL for signal to be sending out when phone successfully transferred a call.
Transfer Failed	Specifies action URL for signal to be sending out when phone fails to transfer a call.
Hold Call	Specifies action URL for signal to be sending out when phone placed a call on hold.
UnHold call	Specifies action URL for signal to be sending out when phone placed retrieved a held call.
Mute call	Specifies action URL for signal to be sending out when mutes a call.
UnMute call	Specifies action URL for signal to be sending out when un-mutes a call.
Open Syslog	Specifies action URL for signal to be sending out when syslog is enabled on the phone.
Close Syslog	Specifies action URL for signal to be sending out when syslog is disabled on the phone.
IP Change	Specifies action URL for signal to be sending out when IP address change.
Auto-Provisioning Finish	Specifies action URL for signal to be sending out when phone completed auto provisioning.
Maintenance → TR-069	
ACS URL	URL for TR-069 Auto Configuration Servers (ACS).
TR-069 Username	ACS username for TR-069.
TR-069 Password	ACS password for TR-069.
Periodic Inform Enable	Enables periodic inform. If set to "Yes", device will send inform packets to the ACS. The default setting is "No".
Periodic Inform Interval	Sets up the periodic inform interval to send the inform packets to the ACS.
Connection Request Username	The user name for the ACS to connect to the phone.



Connection Request Password	The password for the ACS to connect to the phone.
Connection Request Port	The port for the ACS to connect to the phone.
CPE SSL Certificate	The Cert File for the phone to connect to the ACS via SSL.
CPE SSL Private Key	The Cert Key for the phone to connect to the ACS via SSL.
Randomized TR069 Startup	When enabled, the phone will send out first TR-069 INFORM message to server on randomized timing between 1 to 3600 seconds after phone boots up.
Maintenance → Security Settings → Security	
Configuration via Keypad Menu	<p>Configures the access control for the users to configure from keypad Menu.</p> <ul style="list-style-type: none"> • Unrestricted. All the options can be accessed in keypad Menu. • Basic settings only. CONFIG option will not be available in LCD Menu. • Constraint Mode. CONFIG, FACTORY FUNCTIONS and NETWORK options will not be available in LCD menu. • Locked Mode. Allows disabling the MENU. When this option is selected, it will restrict user access to any settings on the LCD: allowing only making and receiving phone calls and basic functionality provided by feature keys.
Enable STAR key Keypad locking	<p>If set to "Yes", the keypad can be locked by pressing and holding the STAR * key for about 4 seconds. A lock icon will show indicating the keypad is locked. The default setting is "Yes".</p> <p>Note: When the keypad is locked, users would need press and hold the STAR * key for about 4 seconds and then enter the password to unlock it.</p> <p>If the Star Key Lock is enabled without specifying password, user can press and hold the STAR * key for 4 seconds and press OK to unlock the phone.</p>
Keypad Lock Type	<p>Users can set Keypad Functional Lock to their phone instead of completely locking the phone.</p> <ul style="list-style-type: none"> • If set to "Functional", only Functional Keys will be locked but you are still allowed to dial out emergency calls; • If set to "Full", all keys will be locked and no emergency calls are allowed
Password to lock/unlock	Configures the password to lock/unlock the keypad. The password field allows number with up to 32 characters.



Emergency numbers	Emergency numbers, separated by comma (,).
Keypad Lock Timer	Defines the timeout (in seconds) of idle screen for locking keypad. Valid range is 0 to 3600.
Validate Server Certificates	Validate server certificates with our trusted list for TLS connections. If set to "No", device will bypass certificate validation (not recommended).
SIP TLS Certificate	SSL Certificate used for SIP TLS Transport. Managed through "Upload" and "Delete" buttons.
SIP TLS Private Key	SSL Private key used for SIP TLS Transport. Managed through "Upload" and "Delete" buttons.
SIP TLS Private Key Password	SSL Private key password used for SIP TLS Transport.
Custom Certificate	This feature allows users to update to the device their own certificate signed by custom CA certificate to manage client authentication.
Web Access Mode	Allows users to enable web access for the phone by specifying which protocol (HTTP/HTTPS) will be used for web interface access or disable the web access by selecting "Disabled". Default setting is HTTP.
Enable User Web Access	Administrator can disable or enable user web access.
HTTP Web Port	Configures the HTTP port under the HTTP web access mode.
HTTPS Web Port	Configures the HTTPS port under the HTTPS web access mode.
Disable SSH	Disable SSH access. SSH is enabled by default.
SSH Public Key	Allows to use authentication keys for SSH access. The public key should be loaded to phone's web UI while the private key should be used in the SSH tool side. Note: This will allow upcoming SSH access without password.
Web/Keypad/Restrict mode Lockout Duration	Specifies the time in minutes that the web or LCD login interface will be locked out to user after five login failures. This logout time is used for web login, STAR keypad unlock and LCD restrict mode admin login. Range is 0-60 minutes.
Web Session Timeout	Configures how long the WEB GUI can remain idle before logout, the accepted range of values is 2-60 minutes. The default setting is 10.
Web Access Attempt Limit	Configures the number of login attempts before lockout. The accepted range is 1-10. The default value is 5



Minimum TLS Version	The function allows users to choose minimum TLS version for HTTPS provisioning and SIP transport. This setting requires reboot to take effect on HTTPS web access. Provisioning and sip transport don't need reboot.
Maximum TLS Version	The function allows users to choose maximum TLS version for HTTPS provisioning and SIP transport. This setting requires reboot to take effect on HTTPS web access. Provisioning and sip transport don't need reboot.
Enable/Disable Weak Ciphers	Allows users to enable Weak TLS Ciphers Suite or disable weak ciphers DES/3DES and RC4, Symmetric Encryption SEED, Symmetric Authentication MD5, Protocol Version SSLv2/SSLv3 or Disable All of The Above Weak TLS Ciphers Suites. This feature could force the TLS version/Cipher suites for HTTPS provisioning and the TLS version for sip transport (TLS/TCP) and HTTPS web access.

Maintenance → Security Settings → Trusted CA certificates

Trusted CA certificates	<p>Users could upload up to 6 CA certificates files to be trusted by the phone and establish secure connections over SSL/TLS servers.</p> <p>The certificates can either be uploaded directly via Web GUI or provisioned using Pvalues [8433 – 8438].</p>
Load CA Certificates	<p>The phone will verify the server certificate based on the built-in, custom or both trusted certificates list. Users can specify which CA certificates to trust :</p> <ul style="list-style-type: none"> • Default Certificates: The phone will verify the server certificate based on the built-in trusted certificates list. • Custom Certificates: The phone will verify the server certificate based on the custom trusted certificates list. <p>All Certificates: The phone will verify the server certificate based on the trusted certificates list including build-in and custom trusted certificates.</p>

Maintenance → Packet Capture

Packet Capture	<p>Now if users want to capture their phone's traffic, they can use the packet capture function on the phone.</p> <ul style="list-style-type: none"> • Press Start to capture packets on the phone. "Running" will be displayed on the web UI indicating that the phone started the capture. • Press Stop to stop the current running capture. <p>Press Download to save the captured trace locally.</p>
-----------------------	---



Contacts Page Definitions

Table 12: Contacts Page Definitions

Contacts → Local Phonebook	
Add Contact	Specifies Contact's First Name, Last Name, Phone Number, Accounts and Groups (Blacklist, Whitelist, Work, Friends and Family) to add one new contact in phonebook. Note: If the contact number belongs to Blacklist group, the call from this number will be blocked. If the contact number belongs to Whitelist group, when the phone is on DND mode, the call from whitelist number will be allowed.
Edit Contact	Edits selected contact.
Delete All Contacts	Deletes all contacts from phonebook.
Contacts → Group Management	
Add Group	Adds new groups. User can also edit and delete existing groups on this page.
Edit Group	Edits selected group.
Contacts → Phonebook Management	
Enable Phonebook XML Download	Configures to enable phonebook XML download. Users could select HTTP/HTTPS/TFTP to download the phonebook file. The default setting is "Disabled".
HTTP/HTTPS User Name	Defines the user name for authentication within the HTTP/HTTPS server when downloading the phonebook file.
HTTP/HTTPS Password	Defines the password for authentication within the HTTP/HTTPS server when downloading the phonebook file.
Phonebook XML Server Path	Configures the server path to download the phonebook XML. This field could be IP address or URL, with up to 256 characters.
Phonebook Download Interval	Configures the phonebook download interval (in minutes). If it's set to 0, the automatic download will be disabled. The default value is 0. The valid range is 5 to 720 minutes.



Remove Manually-edited Entries on Download	If set to "Yes", when XML phonebook is downloaded, the entries added manually will be automatically removed. The default setting is "Yes".
Import Group Method	When set to "Replace", existing groups will be completely replaced by imported one; When set to "Append", the imported groups will be attended with the current one.
Sort Phonebook by	Sort the phonebook on the selection of first name or last name.
Download XML Phonebook	Click on "Download" to download the XML phonebook file to local PC.
Upload XML Phonebook	Click on "Upload" to upload local XML phonebook file to the phone.
Phonebook Key Function	Controls the behavior of phonebook key. There are four options: Default, LDAP Search, Local Phonebook, Local Group.
Contacts → LDAP	
LDAP protocol	Allows users to select LDAP or LDAPS protocol. Default setting is LDAP.
Server Address	Configures the IP address or DNS name of the LDAP server.
Port	Configures the LDAP server port.
Base	Configures the LDAP search base. This is the location in the directory where the search is requested to begin. <u>Examples:</u> dc=grandstream, dc=com ou=Boston, dc=grandstream, dc=com
User Name	Configures the bind "Username" for querying LDAP servers. Some LDAP servers allow anonymous binds in which case the setting can be left blank.
Password	Configures the bind "Password" for querying LDAP servers. The field can be left blank if the LDAP server allows anonymous binds.



LDAP Number Filter	<p>Configures the filter used for number lookups.</p> <p><u>Examples:</u></p> <p>((telephoneNumber=%)(Mobile=%) returns all records which has the "telephoneNumber" or "Mobile" field starting with the entered prefix;</p> <p>(&(telephoneNumber=%) (cn=*)) returns all the records with the "telephoneNumber" field starting with the entered prefix and "cn" field set.</p>
LDAP Name Filter	<p>Configures the filter used for name lookups.</p> <p><u>Examples:</u></p> <p>((cn=%)(sn=%)) returns all records which has the "cn" or "sn" field starting with the entered prefix;</p> <p>!(sn=%) returns all the records which do not have the "sn" field starting with the entered prefix;</p> <p>(&(cn=%) (telephoneNumber=*)) returns all the records with the "cn" field starting with the entered prefix and "telephoneNumber" field set.</p>
LDAP Version	<p>Selects the protocol version for the phone to send the bind requests. The default setting is "Version 3".</p>
LDAP Name Attributes	<p>Specifies the "name" attributes of each record which are returned in the LDAP search result. This field allows the users to configure multiple space separated name attributes.</p> <p><u>Examples:</u></p> <p>gn</p> <p>cn sn description</p>
LDAP Number Attributes	<p>Specifies the "number" attributes of each record which are returned in the LDAP search result. This field allows the users to configure multiple space separated number attributes.</p> <p><u>Examples:</u></p> <p>telephoneNumber</p> <p>telephoneNumber Mobile</p>
LDAP Display Name	<p>Configures the entry information to be shown on phone's LCD. Up to 3 fields can be displayed.</p> <p><u>Example:</u> %cn %sn %telephoneNumber</p>
Max. Hits	<p>Specifies the maximum number of results to be returned by the LDAP server. If</p>



	<p>set to 0, server will return all search results.</p> <p>The default setting is 50.</p>
Search Timeout	<p>Specifies the interval (in seconds) for the server to process the request and client waits for server to return.</p> <p>The default setting is 30 seconds.</p>
Sort Results	<p>Specifies whether the searching result is sorted or not.</p> <p>The default setting is "No".</p>
LDAP Lookup	<p>Configures to enable LDAP number searching when dialing and receiving calls.</p>
Lookup Display Name	<p>Configures the display name when LDAP looks up the name for incoming call or outgoing call. This field must be a subset of the LDAP Name Attributes.</p> <p><u>Example:</u></p> <p>gn</p> <p>cn sn description</p>

NAT Settings

If the devices are kept within a private network behind a firewall, we recommend using STUN Server. The following settings are useful in the STUN Server scenario:

- STUN Server**
 Under **Settings**→**General Settings**, enter a STUN Server IP (or FQDN) that you may have, or look up a free public STUN Server on the internet and enter it on this field. If using Public IP, keep this field blank.
- Use Random Ports**
 It is under **Settings**→**General Settings**. This setting depends on your network settings. When set to "Yes", it will force random generation of both the local SIP and RTP ports. This is usually necessary when multiple GXPs are behind the same NAT. If using a Public IP address, set this parameter to "No".
- NAT Traversal**
 It is under **Accounts X**→**Network Settings**. Default setting is "No". Enable the device to use NAT traversal when it is behind firewall on a private network. Select Keep-Alive, Auto, STUN (with STUN server path configured too) or other option according to the network setting.

Public Mode

The GXP1610/GXP1615/GXP1620/GXP1625/GXP1628/GXP1630 supports Hot Desking using public mode. Under public mode, users could login the phone with the SIP account User ID and password. Please follow the steps below to configure the phone for public mode:



1. Fill up the SIP server address for account 1 first.
2. Under **Web GUI→Settings→General Settings**, set "Public Mode" option to "Yes". Click "Save" and reboot the phone.
3. When the phone boots up, SIP User ID and Password to register to the configured SIP server in account 1 will be required. Enter the correct account information to log in to the phone. When entering the account information, press softkey "123/abc" to toggle input method.
4. In login page, pressing CONF button on the phone will show phone's IP address.
5. After using the phone, go to LCD MENU→Log Out to log off the public mode.

Lock Settings on the Phone

The GXP1610/GXP1615/GXP1620/GXP1625/GXP1628/GXP1630 support the "Locked Mode", when this feature is selected from **Web GUI→Maintenance→Security→Configuration Via Keypad Menu**, it will restrict user access to any settings on the LCD: menu is disabled, only allow making and receiving phone calls and basic functionality provided by the feature keys (transfer / conference /hold / mute / volume / send / speaker).

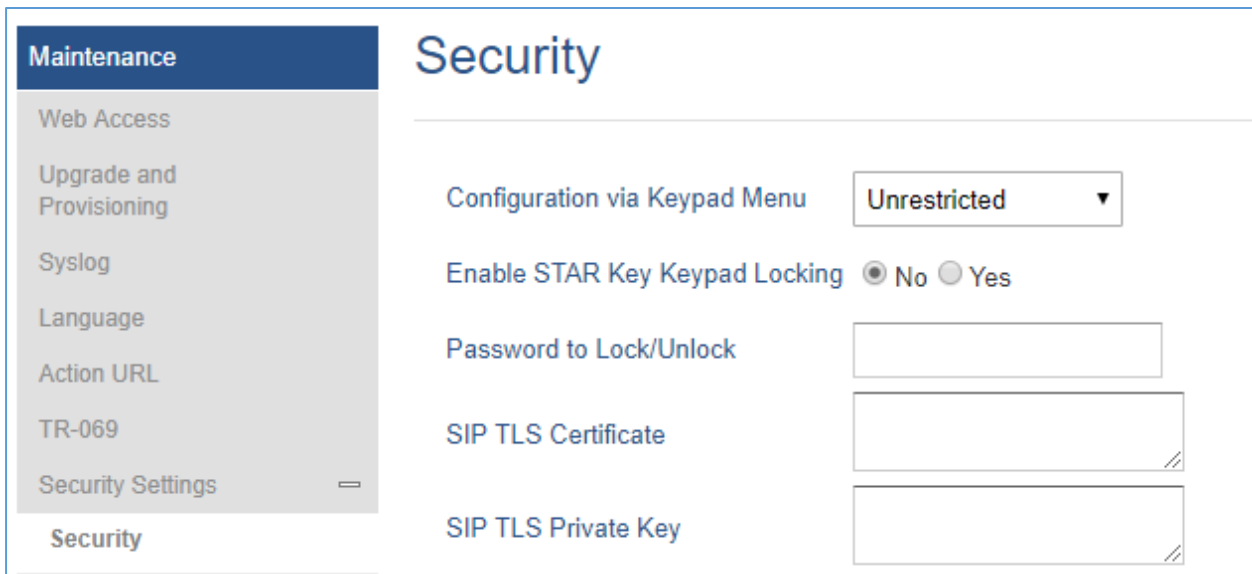


Figure 3: Lock/Unlock Configuration via Keypad Menu

DHCP VLAN

This option can be enabled from web UI→**Network→Advanced Settings**, it adds support for DHCP option 132 & 133 tunneled through DHCP Option 43 on the phone to deploy is on the network. By enabling this option, the phone will try to read VLAN setting from DHCP option 132 and 133. If both of values in these two options are empty, phone will then read from option 43.



Layer 3 QoS for RTP	<input type="text" value="46"/>
Enable DHCP VLAN	<input checked="" type="radio"/> Enabled <input type="radio"/> Disabled
Layer 2 QoS 802.1Q/VLAN Tag	<input type="text" value="0"/>

Figure 4: Enable DHCP VLAN

After user enables this feature, the phone will disable LLDP VLAN setting and try to read VLAN setting from DHCP to override manual setting. Firstly, the phone will send discover package and receive offer package for option 132 (VLAN ID) and option 133 (VLAN priority) via DHCP server.

```

Parameter Request List Item: (1) Subnet Mask
Parameter Request List Item: (2) Time Offset
Parameter Request List Item: (3) Router
Parameter Request List Item: (6) Domain Name Server
Parameter Request List Item: (12) Host Name
Parameter Request List Item: (15) Domain Name
Parameter Request List Item: (28) Broadcast Address
Parameter Request List Item: (42) Network Time Protocol Servers
Parameter Request List Item: (43) Vendor-Specific Information
Parameter Request List Item: (66) TFTP Server Name
Parameter Request List Item: (125) V-I Vendor-specific Information
Parameter Request List Item: (132) PXE - undefined (vendor specific)
Parameter Request List Item: (133) PXE - undefined (vendor specific)
[-] Option: (60) Vendor class identifier
    Length: 32
    Vendor class identifier: Grandstream GXP1628 dsforum.org
[-] Option: (125) V-I Vendor-specific Information
    Length: 36
[-] Enterprise: The Broadband Forum (formerly 'ADSL Forum') (3561)
    
```

Figure 5: DHCP Option 132 & 133

If one of Option 132 or Option 133 is not empty, the phone will read values in these two options. However, if Option 132 and Option 133 are both empty, the phone will retrieve the value of Option 43 for VLAN ID and priority. If VLAN ID and priority are both valid, VLAN setting will take effect after phone rebooting; if one of the value is invalid, DHCP VLAN setting won't override manual setting.

Ability to Configure Record Button


This option can be found under web UI → **Account** → **Call Settings**, it allows users to configure the DTMF that will be sent once record button is pressed during the call.



Call Recording On	<input type="text" value="*40"/>
Call Recording Off	<input type="text" value="*50"/>
Hide Remote User ID	<input type="text" value="None of Calls"/> whose Remote User ID Length is <input type="text" value="0"/> or more
<input type="button" value="Save"/> <input type="button" value="Save and Apply"/> <input type="button" value="Reset"/>	


Figure 6: Call Recording Feature Codes

Editing Contacts and Click-To-Dial

From GXP1610/GXP1615/GXP1620/GXP1625/GXP1628/GXP1630 Web GUI, users could view contacts, edit contacts, or dial out with Click-to-Dial feature  on the top of the Web GUI. In the following figure, the Contact page shows all the added contacts (manually or downloaded via XML phonebook). Here users could add new contact, edit selected contact, or dial the contact/number.

Before using the Click-To-Dial feature, make sure the option "Click-To-Dial Feature" under web GUI→**Settings**→**Call Features** is turned on.

By default, it's disabled and the dialing icon in web GUI is in grey .

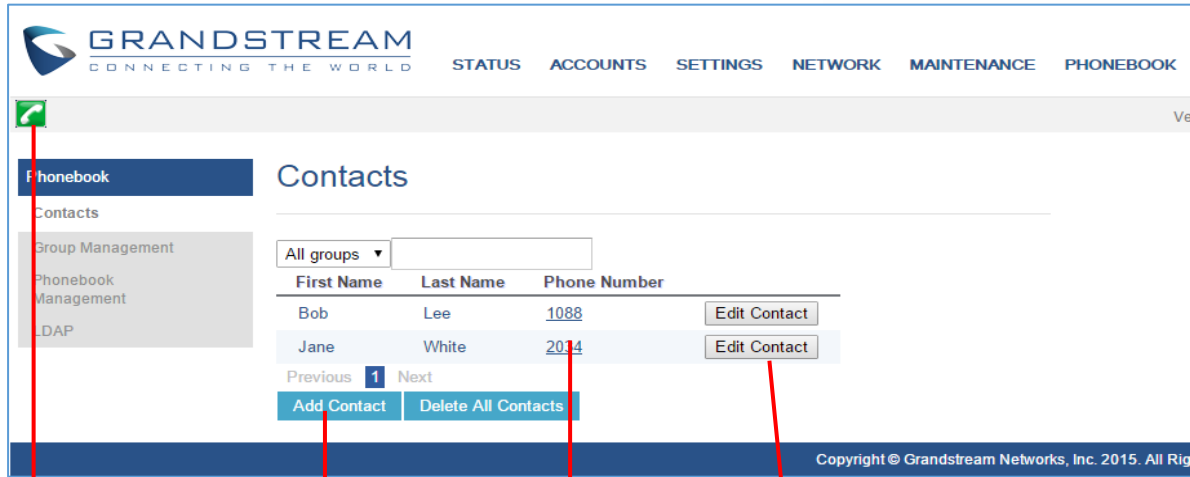
When clicking on the  icon on the top menu of the Web GUI, a new dialing window will show for you to enter the number. Once Dial is clicked, the phone will go off hook and dial out the number from selected account. Please see Figure 4 and Figure 5 in the following pages for more details.

Additionally, users could directly send the command for the phone to dial out by specifying the following URL in PC's web browser, or in the field as required in other call modules.

http://ip_address/cgi-bin/api-make_call?phonenumber=1234&account=0&login=admin&password=admin

In the above link, replace the **fields** with

- **ip_address**:
The IP address of the phone.
- **phonenumber=1234**:
The number for the phone to dial out
- **account=0**:
The account index for the phone to make call. The index is 0 for account 1 and 1 for account 2.
- **password=admin/123**:
The admin or user login passwords of phone's Web GUI.



Click to dial from available lines. Add contacts. Click to call this contact from the phone. Edit contact.

Figure 7: Web GUI→Phonebook→Contacts

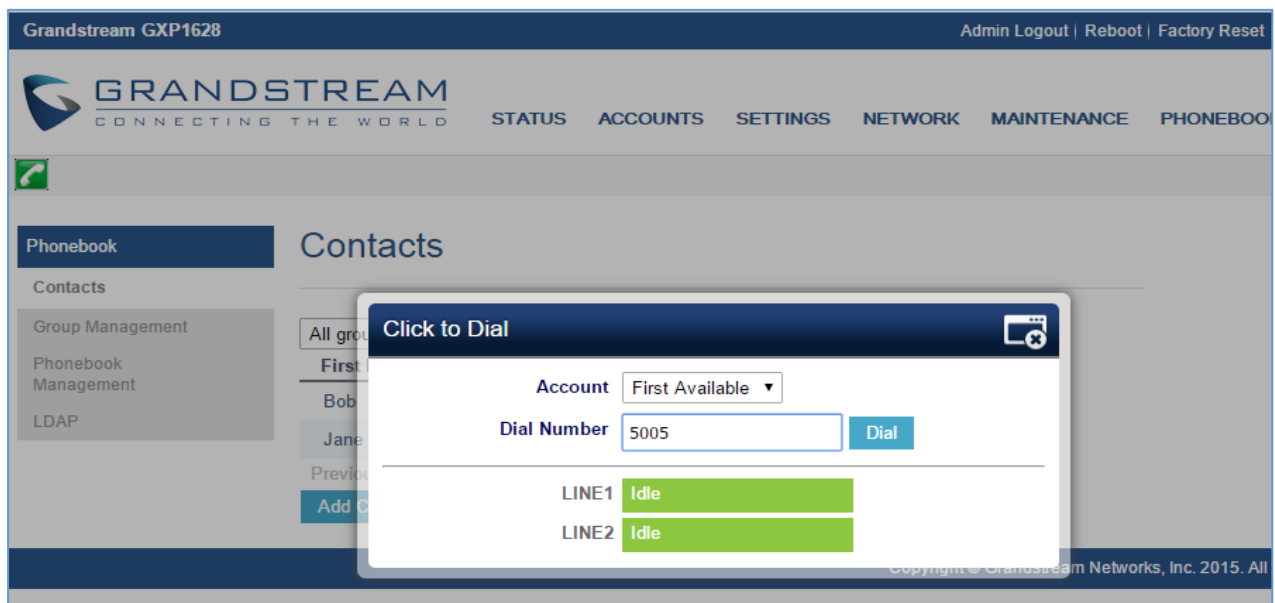


Figure 8: Click-to-Dial

Saving the Configuration Changes

After users makes changes to the configuration, press the "Save" button will save but not apply the changes until the "Apply" button on the top of web GUI page is clicked. Or, users could directly press "Save and Apply" button. We recommend rebooting or powering cycle the phone after applying all the changes.



Action URL

Action URL options can be found under device web UI→**Maintenance**→**Action URL**.

To use Action URL, users need to know the supported events and the dynamic variables for the supported events. The dynamic variables for the supported events will be replaced by the actual values on the phone in order to notify the event to SIP server.



Action URL

Setup Completed

Registered

Unregistered

Register Failed

Off Hook

On Hook

Incoming Call

Outgoing Call

Missed Call

Answered Call

Rejected Call

Forwarded Call

Established Call

Terminated Call

Idle to Busy

Busy to Idle

Open DND

Close DND

Open Forward

Close Forward



Open Unconditional Forward	<input type="text"/>
Close Unconditional Forward	<input type="text"/>
Open Busy Forward	<input type="text"/>
Close Busy Forward	<input type="text"/>
Open No Answer Forward	<input type="text"/>
Close No Answer Forward	<input type="text"/>
Blind Transfer	<input type="text"/>
Attended Transfer	<input type="text"/>
Transfer Finished	<input type="text"/>
Transfer Failed	<input type="text"/>
Hold Call	<input type="text"/>
UnHold Call	<input type="text"/>
Mute Call	<input type="text"/>
UnMute Call	<input type="text"/>
Open Syslog	<input type="text"/>
Close Syslog	<input type="text"/>
IP Change	<input type="text"/>
Auto-Provision Finish	<input type="text"/>

Figure 9: Action URL Settings Page

Table 13: Action URL - Supported Events

Supported Events
Setup Completed
Registered
Unregistered
Register Failed
Off Hook
On Hook
Incoming Call
Outgoing Call
Missed Call
Answered Call
Rejected Call
Forwarded Call
Established Call
Terminated Call
Idle to Busy
Busy to Idle
Open DND
Close DND
Open Forward
Close Forward
Open Unconditional Forward
Close Unconditional Forward
Open Busy Forward
Close Busy Forward
Open No Answer Forward
Close No Answer Forward
Blind Transfer
Attended Transfer
Transfer Failed
Hold Call
UnHold Call

Mute Call
UnMute Call
Open Syslog
Close Syslog
IP Change
Auto-Provision Finish

Table 14: Action URL - Supported Dynamic Variables

Supported Dynamic Variables	
Dynamic Variable	Description
\$phone_ip	The IP address of the phone
\$mac	The MAC address of the phone
\$product	The product name of the phone
\$program_version	The software version of the phone
\$hardware_version	The hardware version of the phone
\$language	The display language of the phone
\$local	The called number on the phone
\$display_local	The display name of the called number on the phone
\$remote	The call number on the remote phone
\$display_remote	The display name of the call number on the remote phone
\$active_user	The account number during a call on the phone

After the user finishes setting Action URL on phone's web UI, when the specific phone event occurs on the phone, phone will send the Action URL to the specified SIP server. The dynamic variables in the Action URL will be replaced by the actual values.

Here is an example:

Configure the following Action URL on the phone's web UI → Settings → Outbound Notification → Action URL:

Incoming Call: `172.18.24.103/mac=$mac&local=$local`
Outgoing Call: `172.18.24.103/remote=$remote&phone_ip=$phone_ip`
On hold: `172.18.24.103/program_version=$program_version`

During incoming call, outgoing call and call hold, capture the trace on the phone and exam the packets. We can see the phone send Action URL with actual values to SIP server to notify phone events. In the following screenshot, from top to bottom, the phone events for each HTTP message are: Outgoing Call, Incoming Call and On Hold in the format of the defined action URL with the parameters replaced with actual values.



Source	Destination	Protocol	Length	Info
000	172.18.23.173	172.18.24.103	HTTP	150 GET /mac=00:0B:82:67:0D:6E&local=2071 HTTP/1.1
7000	172.18.23.173	172.18.24.103	HTTP	152 GET /remote=2071&phone_ip=172.18.23.173 HTTP/1.1
8000	172.18.23.173	172.18.24.103	HTTP	144 GET /program_version=0.10.5.111 HTTP/1.1


```

<
+ Frame 457: 150 bytes on wire (1200 bits), 150 bytes captured (1200 bits) on interface 0
+ Ethernet II, Src: Grandstr_67:0d:6e (00:0b:82:67:0d:6e), Dst: Grandstr_64:e3:12 (00:0b:82:64:e3:12)
+ Internet Protocol Version 4, Src: 172.18.23.173 (172.18.23.173), Dst: 172.18.24.103 (172.18.24.103)
+ Transmission Control Protocol, Src Port: 50668 (50668), Dst Port: 80 (80), Seq: 1, Ack: 1, Len: 84
+ Hypertext Transfer Protocol
  + GET /mac=00:0B:82:67:0D:6E&local=2071 HTTP/1.1\r\n
    + [Expert Info (Chat/Sequence): GET /mac=00:0B:82:67:0D:6E&local=2071 HTTP/1.1\r\n]
      [GET /mac=00:0B:82:67:0D:6E&local=2071 HTTP/1.1\r\n]
      [Severity level: chat]
      [Group: sequence]
      Request Method: GET
      Request URI: /mac=00:0B:82:67:0D:6E&local=2071
      Request Version: HTTP/1.1
      Host: 172.18.24.103\r\n
      Accept: */*\r\n
      \r\n
      [Full request URI: http://172.18.24.103/mac=00:0B:82:67:0D:6E&local=2071]
      [HTTP request 1/1]
      [Response in frame: 462]
  
```

Figure 10: Action URL Packet

The P values listed in below table are for the Action URL options.

Table 15: Action URL Parameters P-values

P Value	Web UI Option	Value Format
P8304	Setup Completed	String
P8305	Registered	
P8306	Unregistered	
P8307	Register Failed	
P8308	Off Hook	
P8309	On Hook	
P8310	Incoming Call	
P8311	Outgoing Call	
P8312	Missed Call	
P22171	Answered Call	
P8315	Rejected Call	
P22172	Forwarded Call	
P8313	Established Call	
P8314	Terminated Call	
P8328	Idle to Busy	
P8329	Busy to Idle	
P8316	Open DND	



P8317	Close DND
P8318	Open Forward
P8319	Close Forward
P22164	Open Unconditional Forward
P22165	Close Unconditional Forward
P22166	Open Busy Forward
P22167	Close Busy Forward
P22168	Open No Answer Forward
P22169	Close No Answer Forward
P8320	Blind Transfer
P8321	Attended Transfer
P8322	Transfer Failed
P8324	Hold Call
P8325	UnHold Call
P8326	Mute Call
P8327	UnMute Call
P8330	Open Syslog
P8331	Close Syslog
P22170	IP Change
P8332	Auto-Provision Finish

Rebooting from Remote Locations

Press the "Reboot" button on the top right corner of the web GUI page to reboot the phone remotely. The web browser will then display a reboot message. Wait for about 1 minute to log in again.

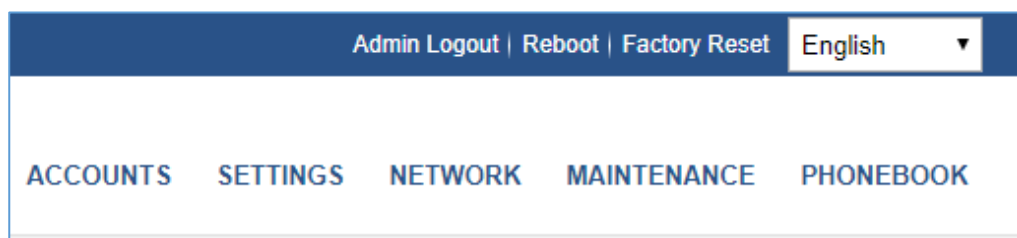


Figure 11: Rebooting the phone via web GUI

UPGRADING AND PROVISIONING

The GXP1610/GXP1615/GXP1620/GXP1625/GXP1628/GXP1630 can be upgraded via TFTP, HTTP/HTTPS, FTP or FTPS by configuring the URL/IP Address for the TFTP/HTTP/HTTPS/FTP/FTPS server and selecting a download method. Configure a valid URL for TFTP or HTTP/HTTPS or FTP/FTPS; the server name can be FQDN or IP address.

Examples of valid URLs:

firmware.grandstream.com/BETA

fw.mycompany.com

There are two ways to setup a software upgrade server: The LCD Keypad Menu or the Web Configuration Interface.

Upgrade via Keypad Menu

Follow the steps below to configure the upgrade server path via phone's keypad menu:

1. Press MENU button and navigate using Up/Down arrow to select **Config**.
2. In the Config options, select **Upgrade**.
3. Enter the firmware server path and select upgrade method. The server path could be in IP address format or FQDN format.
4. Press the "OK" softkey. A reboot message window will be prompt.
5. Reboot the phone to have the change take effect.

When upgrading starts, the screen will show upgrading progress. When done you will see the phone restarts again. Please do not interrupt or power cycle the phone when the upgrading process is on.

Upgrade via Web GUI

Open a web browser on PC and enter the IP address of the phone. Then, login with the administrator username and password. Go to **Maintenance**→**Upgrade and Provisioning** page, enter the IP address or the FQDN for the upgrade server in "Firmware Server Path" field and choose to upgrade via TFTP or HTTP/HTTPS/FTP/FTPS. Update the change by clicking the "Save and Apply" button. Then "Reboot" or power cycle the phone to update the new firmware. When upgrading starts, the screen will show upgrading progress. When done, you will see the phone restart again. Please do not interrupt or power cycle the phone when the upgrading process is on.

Firmware upgrading takes around 3 minutes in a controlled LAN or 5-10 minutes over the Internet. We recommend completing firmware upgrades in a controlled LAN environment whenever possible.



 **Note:**

Please do not interrupt or power cycle the GXP1610/GXP1615/GXP1620/GXP1625/GXP1628/GXP1630 during upgrading process.

No Local TFTP/HTTP Servers

Service providers should maintain their own firmware upgrade servers. For users who do not have a TFTP/HTTP/HTTPS/FTP/FTPS server, some free Windows version TFTP servers are available for download from:

http://tftpd32.jounin.net/tftpd32_download.html.

Please check our web site at <http://www.grandstream.com/support/firmware> for latest firmware.

Instructions for local firmware upgrade via TFTP:

1. Unzip the firmware files and put all of them in the root directory of the TFTP server;
2. Connect the PC running the TFTP server and the phone to the same LAN segment;
3. Launch the TFTP server and go to the File menu→Configure→Security to change the TFTP server's default setting from "Receive Only" to "Transmit Only" for the firmware upgrade;
4. Start the TFTP server and configure the TFTP server in the phone's web configuration interface;
5. Configure the Firmware Server Path to the IP address of the PC;
6. Update the changes and reboot the phone.

End users can also choose to download a free HTTP server from <http://httpd.apache.org/> or use Microsoft IIS web server.

Configuration File Download

Grandstream SIP Devices can be configured via the Web Interface as well as via a Configuration File (binary or XML) through TFTP or HTTP/HTTPS or FTP/FTPS. The "Config Server Path" is the TFTP or HTTP/HTTPS or FTP/FTPS server path for the configuration file. It needs to be set to a valid URL, either in FQDN or IP address format. The "Config Server Path" can be the same or different from the "Firmware Server Path".

A configuration parameter is associated with each particular field in the web configuration page. A parameter consists of a Capital letter P and 2 to 5-digit numeric numbers. i.e., P2 is associated with the "Admin Password" in the Web GUI→**Maintenance**→**Web/Telnet** Access page. For a detailed parameter list, please refer to the corresponding firmware release configuration template.



When GXP1610/GXP1615/GXP1620/GXP1625/GXP1628/GXP1630 boots up, it will send TFTP or HTTP/HTTPS or FTP/FTPS requests to download configuration files, “cfg000b82xxxxxx” and “cfg000b82xxxxxx.xml”, where “000b82xxxxxx” is the MAC address of the phone. If the download of “cfgxxxxxxxxxxxx.xml” is not successful, phone will issue request for a generic configuration file “cfg.xml”. Configuration file name should be in lower case letters.

Note: (Attempt to download Config File again)

When doing provision on the phone, if your first config file contains p-values listed below, phone will try to download the potential second cfg.xml file and apply the second file without rebooting. Maximum 3 extra attempts.

Those P-values are:

- *212 -- Config upgrade via
- *234 -- Config prefix
- *235 -- Config postfix
- *237 -- Config upgrade Server
- *240 – Authenticate Config File
- *1359 – XML Config File Password
- *8463 – Validate Server Certificate
- *8467 – Download and process ALL Available Config Files
- *20713 – Always authenticate before challenge
- *22011 – Bypass Proxy For
- *22030 – Enable SSL host verification for provision

Note: (P-values that trigger Auto-Provision)

If the p-values listed below are changed while managing configuration on web UI or LCD, the provision process will be triggered: * 192 -- Firmware upgrade server

- * 232 -- Firmware prefix
- * 233 -- Firmware postfix
- * 6767 -- Firmware Upgrade Via
- * 6768 -- Firmware HTTP/HTTPS Username
- * 6769 -- Firmware HTTP/HTTPS Password
- * 237 -- Config upgrade Server
- * 212 -- Config upgrade via
- * 234 -- Config prefix
- * 235 -- Config postfix
- * 1360 -- Config HTTP/HTTPS username
- * 1361 -- Config HTTP/HTTPS password



Certificates and Keys Provisioning

Users can configure the phone to get all the needed certificates during boot up. Instead of putting the certificate/key content in text directly from the Web interface or uploading them manually, they can choose to provision them from the configuration file by putting the URL in the Pvalue field of each certificate and/or key. (e.g. http://ProvisionServer_address/SIP-TLS-Certificate.pem) The phone will then process the URL, search for the appropriate certificate/Key file, download it and then apply it into the phone.

```
HTTP GET /cfggxp1630.xml HTTP/1.1
HTTP HTTP/1.1 200 OK (application/octet-stream)
HTTP GET /SIP-TLS-Private-Key.key HTTP/1.1
HTTP HTTP/1.1 404 Not Found (text/html)
HTTP GET /SIP-TLS-Certificate.pem HTTP/1.1
HTTP HTTP/1.1 200 OK (application/octet-stream)
HTTP GET /Trusted-certificate-1.crt HTTP/1.1
HTTP HTTP/1.1 200 OK (application/octet-stream)
HTTP GET /Trusted-certificate-2.crt HTTP/1.1
HTTP HTTP/1.1 200 OK (application/octet-stream)
HTTP GET /Trusted-certificate-3.crt HTTP/1.1
HTTP HTTP/1.1 200 OK (application/octet-stream)
HTTP GET /Trusted-certificate-4.crt HTTP/1.1
HTTP HTTP/1.1 200 OK (application/octet-stream)
HTTP GET /Trusted-certificate-5.crt HTTP/1.1
HTTP HTTP/1.1 200 OK (application/octet-stream)
HTTP GET /Trusted-certificate-6.crt HTTP/1.1
HTTP HTTP/1.1 200 OK (application/octet-stream)
HTTP GET /OpenVPN-CA.crt HTTP/1.1
HTTP HTTP/1.1 200 OK (application/octet-stream)
HTTP GET /OpenVPN-Certificate.pem HTTP/1.1
HTTP HTTP/1.1 200 OK (application/octet-stream)
HTTP GET /OpenVPN-Key.key HTTP/1.1
HTTP HTTP/1.1 200 OK (application/octet-stream)
HTTP GET /gxp1600fw.bin HTTP/1.1
HTTP HTTP/1.1 404 Not Found (text/html)
HTTP GET /ring1.bin HTTP/1.1
HTTP HTTP/1.1 404 Not Found (text/html)
HTTP GET /ring2.bin HTTP/1.1
HTTP HTTP/1.1 404 Not Found (text/html)
HTTP GET /ring3.bin HTTP/1.1
HTTP HTTP/1.1 404 Not Found (text/html)
```

Figure 12: Certificates Files Download

For more details on XML provisioning, please refer to:

http://www.grandstream.com/sites/default/files/Resources/gs_provisioning_guide.pdf



RESTORE FACTORY DEFAULT SETTINGS

 **Warning:**

Restoring the Factory Default Settings will delete all configuration information on the phone. Please backup or print all the settings before you restore to the factory default settings. Grandstream is not responsible for restoring lost parameters and cannot connect your device to your VoIP service provider.

Please follow the instructions below to reset the phone:

Restore to Factory Default via the LCD Menu

1. Press MENU button to bring up the keypad configuration menu.
2. Select "System" and enter.
3. Select "Factory Reset".
4. A warning window will pop out to make sure a reset is requested and confirmed.
5. Press the "OK" softkey to confirm and the phone will reboot. To cancel the Reset, press "Cancel" softkey instead.

Restore to Factory Default via the Web GUI

1. Login GXP1610/GXP1615/GXP1620/GXP1625/GXP1628/GXP1630 Web GUI.
2. Direct at the top right corner of the web page, click "Factory Reset" button to reset the device.



EXPERIENCING THE

GXP1610/GXP1615/GXP1620/GXP1625/GXP1628/GXP1630

Please visit our website: <http://www.grandstream.com> to receive the most up- to-date updates on firmware releases, additional features, FAQs, documentation and news on new products.

We encourage you to browse our [product related documentation](#), [FAQs](#) and [User and Developer Forum](#) for answers to your general questions. If you have purchased our products through a Grandstream Certified Partner or Reseller, please contact them directly for immediate support.

Our technical support staff is trained and ready to answer all your questions. Contact a technical support member or [submit a trouble ticket online](#) to receive in-depth support.

Thank you again for purchasing Grandstream IP phone, it will be sure to bring convenience and color to both your business and personal life.



FCC Notices:

This device complies with part 15 of the FCC Rules. Operation is subject to the following two conditions: (1) This device may not cause harmful interference, and (2) this device must accept any interference received, including interference that may cause undesired operation.

Notes FCC:

Ce dispositif est conforme à la partie 15 des directives FCC. L'utilisation du dispositif doit répondre aux deux conditions suivantes : (1) Ce dispositif ne doit pas générer d'interférences dangereuses et (2) ce dispositif doit supporter toutes les interférences reçues, y compris les interférences susceptibles de provoquer des dysfonctionnements.

Avisos de la FCC:

Este dispositivo cumple con el apartado 15 de las reglas de la FCC. El funcionamiento queda sujeto a las siguientes dos condiciones: (1) Este dispositivo no puede causar interferencias perjudiciales y (2) este dispositivo debe admitir cualquier interferencia que reciba, incluidas aquellas que pudieran causar un funcionamiento no deseado.

**Caution:**

Any changes or modifications to this device not explicitly approved by Grandstream could void your authority to operate this equipment.

**Mise en garde :**

Toute altération ou modification de ce dispositif non approuvée de manière explicite par Grandstream peut invalider votre droit à utiliser cet appareil.

**Precaución:**

Cualquier cambio o modificación que se realice en este dispositivo y que no esté aprobado/a explícitamente por Grandstream podría anular su autoridad para operar este equipo.

