

## Product Specifications

16-Port 10/100/1000T 802.3bt PoE + 4-Port Gigabit TP/SFP Combo Managed Switch

### **GS-4210-16UP4C-600**

Version 2.0

This document contains confidential proprietary information and is property of PLANET. The contents of this document should not be disclosed to unauthorized persons without the written consent of PLANET.

#### Change History:

<b>Revision:</b>	<b>Date:</b>	<b>Author:</b>	<b>Change List</b>
Version 2.0_600W version			

<b>Author:</b>	Jos Li	<b>Editor:</b>	Jos Li
<b>Reviewed by:</b>	Kent Kang	<b>Approved by:</b>	Kent Kang

## 1. PRODUCT DESCRIPTION

### A New Generation 802.3bt PoE++ Managed Switch with Advanced L2/L4 Switching and Security

PLANET GS-4210-16UP4C is a cost-optimized, 1U, Gigabit 802.3bt PoE++ Managed Switch featuring PLANET **intelligent PoE** functions to improve the availability of critical business applications. It provides IPv6/IPv4 dual stack management and built-in L2/L4 Gigabit switching engine along with **16 10/100/1000BASE-T** ports featuring **802.3bt PoE++** and **4 additional Gigabit TP/SFP combo ports**. With a total power budget of up to **600 watts** for different kinds of PoE applications, respectively, the GS-4210-16UP4C provides a quick, safe and cost-effective 802.3bt PoE++ network solution for small businesses and enterprises.

### 60~90Watts of Power over 4-pair UTP

The GS-4210-16UP4C 802.3bt PoE++ solution adopts the IEEE 802.3at/af standard. Instead of delivering power over 2-pair twisted UTP – be it end-span (Pin 1, 2, 3 and 6) or mid-span (Pin 4, 5, 7 and 8), it provides the capability to source up to 60 watts of power by using all the four pairs of standard Cat5e/6 Ethernet cabling. In the new 4-pair system, two PSE controllers will be used to power both the data pairs and the spare pairs. It can offer more PoE applications, such as:

- PoE PTZ speed dome
- Any network device that needs higher PoE power to work normally
- Thin-client
- AIO (All-in-One) touch PC
- Remote digital signage display



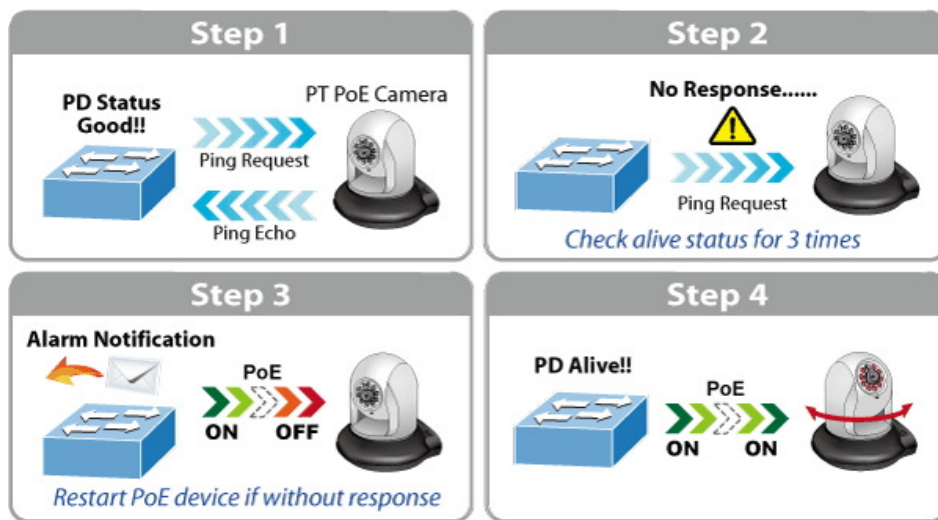
### Built-in Unique PoE Functions for Powered Devices Management

As it is the managed PoE switch for surveillance, wireless and VoIP networks, the GS-4210-16UP4C features the following special PoE management functions:

- PD alive check
- Scheduled power recycling
- PoE schedule
- PoE usage monitoring

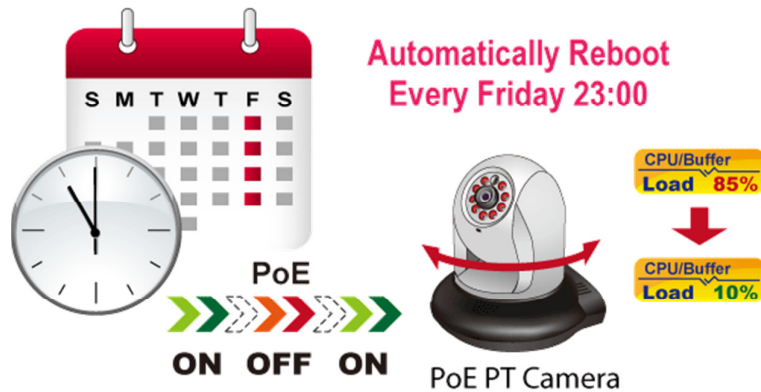
**Intelligent Powered Device Alive Check**

The GS-4210-16UP4C can be configured to monitor connected PD (Powered Device) status in real time via ping action. Once the PD stops working and responding, the GS-4210-16UP4C will resume the PoE port power and bring the PD back to work. It will greatly enhance the network reliability through the PoE port resetting the PD's power source and reducing administrator management burden.



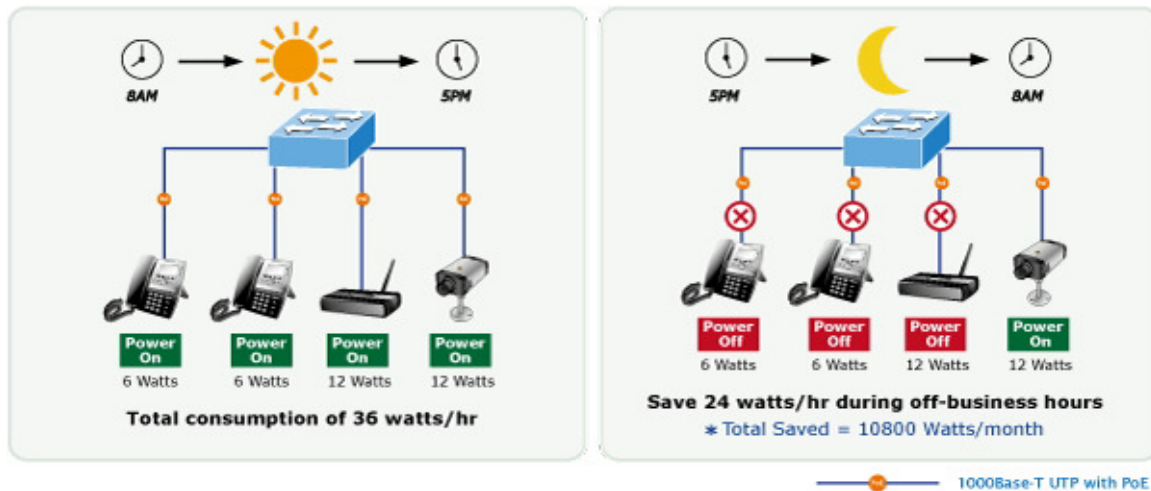
**Scheduled Power Recycling**

The GS-4210-16UP4C allows each of the connected PoE IP cameras or PoE wireless access points to reboot at a specified time each week. Therefore, it will reduce the chance of IP camera or AP crash resulting from buffer overflow.



### PoE Schedule for Energy Saving

Under the trend of energy saving worldwide and contributing to environmental protection, the GS-4210-16UP4C can effectively control the power supply besides its capability of giving high watts power. The “**PoE schedule**” function helps you to enable or disable PoE power feeding for each PoE port during specified time intervals and it is a powerful function to help SMBs or Enterprises save power and money. It also increases security by powering off PDs that should not be in use during non-business hours.



### PoE Usage Monitoring

Via the power usage chart in the web management interface, the GS-4210-16UP4C enables the administrator to monitor the status of the power usage of the connected PDs in real time. Thus, it greatly enhances the management efficiency of the facilities.

### PoE Power and Ethernet Data Transmission Distance Extension

In the “**Extend**” operation mode, the GS-4210-16UP4C operates on a per-port basis at 10Mbps duplex operation but can support up to 60-watt PoE power output over a distance of up to 250 meters overcoming the 100m limit on Ethernet UTP cable. With this brand-new feature, the GS-4210-16UP4C provides an additional solution for PoE distance extension, thus saving the cost of Ethernet cable installation.

### Environment-friendly, Smart Fan Design for Silent Operation

The GS-4210-16UP4C features a rackmount-sized metal housing, a low noise design and an effective ventilation system. It supports the smart fan technology that automatically controls the speed of the built-in fan to reduce noise and maintain the temperature of the PoE switch for optimal power output capability. The GS-4210-16UP4C is able to operate reliably, stably and quietly in any environment without affecting its performance.

### IPv6/IPv4 Dual Stack Management

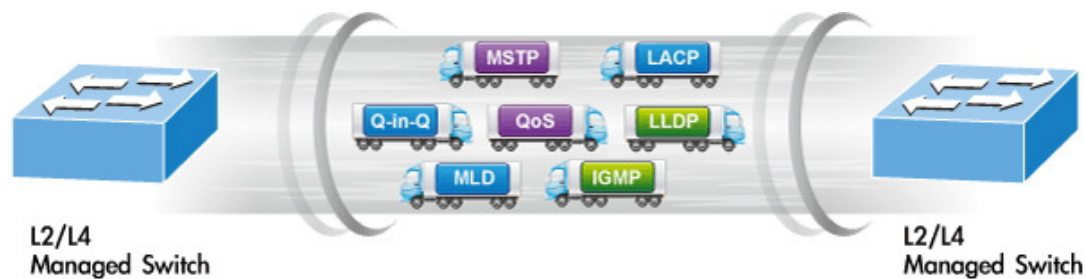
Supporting both IPv6 and IPv4 protocols, the GS-4210-16UP4C helps the SMBs to step in the IPv6 era with the lowest investment as its network facilities need not be replaced or overhauled if the IPv6 FTTx edge network is set up.

### Cybersecurity Network Solution to Minimize Security Risks

The cybersecurity feature that virtually needs no effort and cost to have includes the protection of the switch management and the enhanced security of the mission-critical network. Both SSHv2 and TLS protocols are utilized to provide strong protection against advanced threats.

### Robust Layer 2 Features

The GS-4210-16UP4C can be programmed for advanced switch management functions such as dynamic port link aggregation, 802.1Q VLAN and **Q-in-Q VLAN**, **Multiple Spanning Tree Protocol (MSTP)**, loop and **BPDU guard**, **IGMP snooping**, and **MLD snooping**. Via the link aggregation, the GS-4210-16UP4C allows the operation of a high-speed trunk to combine with multiple ports, and supports fail-over as well. Also, the **Link Layer Discovery Protocol (LLDP)** is the Layer 2 protocol included to help discover basic information about neighboring devices on the local broadcast domain.



### Efficient Traffic Control

The GS-4210-16UP4C is loaded with robust QoS features and powerful traffic management to enhance services to business-class data, voice and video solutions. The functionality includes broadcast/multicast **storm control**, per port **bandwidth control**, IP DSCP QoS priority and remarking. It guarantees the best performance for VoIP and video stream transmission, and empowers the enterprises to take full advantage of the limited network resources.

### Powerful Security

PLANET GS-4210-16UP4C offers comprehensive **IPv4/IPv6** Layer 2 to Layer 4 **Access Control List (ACL)** for enforcing security to the edge. It can be used to restrict network access by denying packets based on source and destination IP address, TCP/UDP ports or defined typical network applications. Its protection mechanism also comprises **802.1X port-based** user and device authentication, which can be deployed with RADIUS to ensure the port level security and block illegal users. With the **protected port** function, communication between edge ports can be prevented to guarantee user privacy. Furthermore, **Port security** function allows to limit the number of network devices on a given port.

### Advanced Network Security

The GS-4210-16UP4C also provides **DHCP snooping**, **IP source guard** and **dynamic ARP inspection** functions to prevent IP snooping from attack and discard ARP packets with invalid MAC address. The network administrators can now construct highly-secure corporate networks with considerably less time and effort than before.

### Friendly and Secure Management

For efficient management, the GS-4210-16UP4C is equipped with **web**, **Telnet** and **SNMP** management interfaces. With the built-in web-based management interface, the GS-4210-16UP4C offers an easy-to-use, platform-independent management

and configuration facility. By supporting the standard SNMP, the switch can be managed via any standard management software. For text-based management, the switch can be accessed via Telnet. Moreover, the GS-4210-16UP4C offers secure remote management by supporting **SSH**, **SSL** and **SNMP v3** connections which encrypt the packet content at each session.

### **Flexibility and Long-distance Extension Solution**

The four mini-GBIC slots built in the GS-4210-16UP4C support SFP auto-detection and dual speed as it features **100BASE-FX** and **1000BASE-SX/LX SFP** (Small Form-factor Pluggable) fiber transceivers to uplink to backbone switch and monitoring center in long distance. The distance can be extended from 550 meters to 2 kilometers (multi-mode fiber) and up to above 10/20/30/40/50/70/120 kilometers (single-mode fiber or WDM fiber). They are well suited for applications within the enterprise data centers and distributions.

### **Intelligent SFP Diagnosis Mechanism**

The GS-4210-16UP4C supports **SFP-DDM (Digital Diagnostic Monitor)** function that can easily monitor real-time parameters of the SFP for network administrator, such as optical output power, optical input power, temperature, laser bias current and transceiver supply voltage.

## 2. PRODUCT FEATURES

### Physical Port

- 20 10/100/1000BASE-T Gigabit RJ45 copper ports with 16-Port IEEE 802.3bt PoE++ injector
- 4 100/1000BASE-X mini-GBIC/SFP slots, shared with port-17 to port-20 compatible with 100BASE-FX SFP
- RJ45 console interface for switch basic management and setup

### Power over Ethernet

- Complies with IEEE 802.3bt Power over Ethernet Plus Plus
- Backward compatible with IEEE 802.3at Power over Ethernet Plus
- Up to 16 ports of IEEE 802.3bt PoE++/802.3at PoE+ devices powered
- 8 PoE ports with built-in 802.3bt PoE++ Type-4 90W injector function (Port-1 to Port-8)
- 8 PoE ports with built-in 802.3bt PoE++ Type-3 60W injector function (Port-9 to Port-16)
- Auto detects powered device (PD)
- Circuit protection prevents power interference between ports
- Remote power feeding up to 100 meters
- PoE management
  - Total PoE power budget control
  - Per port PoE function enable/disable
  - PoE port power feeding priority
  - Per PoE port power limitation
  - PD classification detection
  - PoE extend mode control to support power feeding up to a distance of up to 160 meters
- Intelligent PoE features
  - PD alive check
  - PoE schedule

### Layer 2 Features

- Prevents packet loss with back pressure (half-duplex) and IEEE 802.3x pause frame flow control (full-duplex)
- High performance Store and Forward architecture, broadcast storm control, and runt/CRC filtering that eliminates erroneous packets to optimize the network bandwidth
- Supports VLAN
  - IEEE 802.1Q tagged VLAN
  - Provider Bridging (VLAN Q-in-Q) support (IEEE 802.1ad)
  - Protocol VLAN
  - Voice VLAN
  - Private VLAN
  - Management VLAN
  - GVRP

- Supports **Spanning Tree Protocol**
  - STP (Spanning Tree Protocol)
  - RSTP (Rapid Spanning Tree Protocol)
  - MSTP (Multiple Spanning Tree Protocol)
  - STP BPDU Guard, BPDU filtering and BPDU forwarding

- Supports **Link Aggregation**
  - IEEE 802.3ad Link Aggregation Control Protocol (LACP)
  - Cisco ether-channel (static trunk)

- Provides port mirror (many-to-1)
- Loop protection to avoid broadcast loops

#### ▶ **Quality of Service**

- Ingress and egress rate limit per port bandwidth control
- Storm control support
  - Broadcast/Unknown unicast/Unknown multicast
- Traffic classification
  - IEEE 802.1p CoS
  - TOS/DSCP/IP precedence of IPv4/IPv6 packets
- Strict priority and Weighted Round Robin (WRR) CoS policies

#### ▶ **Multicast**

- Supports IPv4 IGMP snooping v2 and v3
- Supports IPv6 MLD snooping v1, v2
- IGMP querier mode support
- IGMP snooping port filtering
- MLD snooping port filtering

#### ▶ **Security**

- Authentication
  - IEEE 802.1X port-based network access authentication
  - Built-in RADIUS client to cooperate with the RADIUS servers
  - RADIUS/TACACS+ login user access authentication
- Access control list
  - IPv4/IPv6 IP-based ACL
  - MAC-based ACL
- MAC security
  - Static MAC
  - MAC filtering
- Port security for source MAC address entries filtering
- DHCP snooping to filter distrusted DHCP messages
- Dynamic ARP Inspection discards ARP packets with invalid MAC address to IP address binding
- IP source guard prevents IP spoofing attacks

- DoS attack prevention
- SSH/SSL

▶ **Management**

- IPv4 and IPv6 dual stack management
- Switch management interface
  - Web switch management
  - Telnet command line interface
  - SNMP v1, v2c and v3
  - SSH and SSL secure access
- User privilege levels control
- Built-in Trivial File Transfer Protocol (TFTP) client
- BOOTP and DHCP for IP address assignment
- System maintenance
  - Firmware upload/download via HTTP/TFTP
  - Configuration upload/download through web interface
  - Dual images
  - Hardware reset button for system reboot or reset to factory default
- SNTP Network Time Protocol
- Cable diagnostics
- Link Layer Discovery Protocol (LLDP) and LLDP-MED
- SNMP trap for interface link up and link down notification
- Event message logging to remote Syslog server
- Four RMON groups (history, statistics, alarms and events)
- PLANET smart discovery utility
- Smart fan with speed control

### 3. PRODUCT SPECIFICATIONS

#### 3.1 MAIN COMPONENTS

<b>Switch ASIC:</b>	Realtek RTL8382M	x 1
<b>Giga PHY:</b>	Realtek RTL8218B	x 1
<b>Combo PHY:</b>	Realtek RTL8214FC	x 1
<b>Flash:</b>	16M bytes	x 1
<b>DDR RAM:</b>	128M bytes	x 1
<b>PoE Chip:</b>	Microchip PD69200C	x 1
	Microchip PD69208T4	x 2
	Microchip PD69208M	x 2
<b>Open Frame Power Supply:</b>	Output: 12V DC, 8.3A; 54V DC, 14.8A	x 1

#### 3.2 FUNCTION SPECIFICATIONS

<b>Product</b>	<b>GS-4210-16UP4C</b>
<b>Hardware Specifications</b>	
<b>Copper Ports</b>	20 x 10/100/1000BASE-T RJ45 auto-MDI/MDI-X port
<b>SFP/mini-GBIC Slots</b>	4 x 100/1000BASE-X SFP interface shared with port-17 to port-20 Supports 100/1000Mbps dual mode and DDM
<b>PoE Injector Port</b>	16 ports with 802.3bt PoE++ injector function with port-1 to port-16
<b>Switch Architecture</b>	Store-and-Forward
<b>Switch Fabric</b>	40Gbps/non-blocking
<b>Switch Throughput@64Bytes</b>	29.7Mpps
<b>Address Table</b>	8K entries
<b>Shared Data Buffer</b>	4.1 megabits
<b>Flow Control</b>	IEEE 802.3x pause frame for full-duplex Back pressure for half-duplex
<b>Jumbo Frame</b>	10K bytes
<b>Reset Button</b>	< 5 sec: System reboot > 5 sec: Factory default
<b>LED</b>	PWR, SYS, LNK/ACT, PoE-in-use, 1000, FAN1, FAN2, FAN3, PoE PWR
<b>Power Requirements</b>	100~240V AC, 50/60Hz, auto-sensing
<b>Dimensions (W x D x H)</b>	440 x 300 x 44.5 mm, 1U height
<b>ESD Protection</b>	4kV Contact Discharge 8kV Air Discharge

<b>Enclosure</b>	Metal
<b>Weight</b>	4900g
<b>Power Consumption/Dissipation</b>	740 watts (max.)/2539 BTU
<b>Fan</b>	3 x smart fan
<b>Power over Ethernet</b>	
<b>PoE Standard</b>	802.3bt PoE++ PSE Backward compatible with IEEE 802.3af/802.3at PoE PSE
<b>PoE Power Supply Type</b>	<ul style="list-style-type: none"> <li>■ 802.3bt</li> <li>■ UPoE</li> <li>■ End-span</li> <li>■ Mid-span</li> <li>■ Force</li> </ul>
<b>PoE Power Output</b>	Per port 54V DC <ul style="list-style-type: none"> <li>■ 802.3bt Type-4 mode, Port-1 to Port-8: maximum 90 watts</li> <li>■ 802.3bt Type-3 mode, Port-9 to Port-16: maximum 60 watts</li> <li>■ UPoE mode, Port-1 to Port-8: maximum 95 watts</li> <li>■ UPoE-mode, Port-9 to Port-24: maximum 72 watts</li> <li>■ Force mode: maximum 60 watts</li> <li>■ End-span mode: maximum 36 watts</li> <li>■ Mid-span mode: maximum 36 watts</li> </ul>
<b>Power Pin Assignment</b>	802.3at End-span: 1/2(-), 3/6(+) 802.3at Mid-span: 4/5(+), 7/8(-) UPoE: 1/2(-), 3/6(+),4/5(+), 7/8(-) 802.3bt : 1/2(-), 3/6(+),4/5(+), 7/8(-)
<b>PoE Power Budget</b>	600 watts (max.)
<b>PoE Ability PD @ 15 watts</b>	16 units
<b>PoE Ability PD @ 30 watts</b>	16 units
<b>PoE Ability PD @ 60 watts</b>	10 units
<b>PoE Ability PD @ 90 watts</b>	6 units
<b>Layer 2 Functions</b>	
<b>Port Mirroring</b>	TX/RX/both Many-to-1 monitor
<b>VLAN</b>	802.1Q tagged-based VLAN Up to 256 VLAN groups, out of 4094 VLAN IDs 802.1ad Q-in-Q tunneling Voice VLAN Protocol VLAN Private VLAN (Protected port) GVRP

<b>Link Aggregation</b>	IEEE 802.3ad LACP and static trunk Supports 4 groups of 4-port trunk
<b>Spanning Tree Protocol</b>	IEEE 802.1D Spanning Tree Protocol (STP) IEEE 802.1w Rapid Spanning Tree Protocol (RSTP) IEEE 802.1s Multiple Spanning Tree Protocol (MSTP)
<b>IGMP Snooping</b>	IGMP (v2/v3) snooping IGMP querier Up to 256 multicast groups
<b>MLD Snooping</b>	MLD (v1/v2) snooping, up to 256 multicast groups
<b>Access Control List</b>	IPv4/IPv6 IP-based ACL/MAC-based ACL
<b>QoS</b>	8 mapping IDs to 8 level priority queues <ul style="list-style-type: none"> <li>- Port number</li> <li>- 802.1p priority</li> <li>- 802.1Q VLAN tag</li> <li>- DSCP field in IP packet</li> </ul> Traffic classification based, strict priority and WRR
<b>Security</b>	IEEE 802.1X port-based authentication Built-in RADIUS client to cooperate with RADIUS server RADIUS/TACACS+ user access authentication IP-MAC port binding MAC filtering Static MAC address DHCP Snooping and DHCP Option82 STP BPDU guard, BPDU filtering and BPDU forwarding DoS attack prevention ARP inspection IP source guard
<b>Management Functions</b>	
<b>Basic Management Interfaces</b>	Web browser; Telnet; SNMP v1, v2c Firmware upgrade by HTTP/TFTP Protocol through Ethernet network Remote/Local syslog System log LLDP Protocol SNTP
<b>Secure Management Interfaces</b>	SSHv2, TLS v1.2, SSL, SNMP v3
<b>SNMP MIBs</b>	RFC 1213 MIB-II RFC 1215 Generic Traps RFC 1493 Bridge MIB RFC 2674 Bridge MIB Extensions RFC 2737 Entity MIB (v2) RFC 2819 RMON (1, 2, 3, 9) RFC 2863 Interface Group MIB RFC 3635 Ethernet-like MIB
<b>Standards Conformance</b>	

<b>Regulatory Compliance</b>	FCC Part 15 Class A, CE, LVD
<b>Standards Compliance</b>	<p>IEEE 802.3 10BASE-T  IEEE 802.3u 100BASE-TX/100BASE-FX  IEEE 802.3z Gigabit SX/LX  IEEE 802.3ab Gigabit 1000T  IEEE 802.3x flow control and back pressure  IEEE 802.3ad port trunk with LACP  IEEE 802.1D Spanning Tree Protocol  IEEE 802.1w Rapid Spanning Tree Protocol  IEEE 802.1s Multiple Spanning Tree Protocol  IEEE 802.1p Class of Service  IEEE 802.1Q VLAN tagging  IEEE 802.1x Port Authentication Network Control  IEEE 802.1ab LLDP  IEEE 802.3af Power over Ethernet  IEEE 802.3at Power over Ethernet Plus  IEEE 802.3bt Power over Ethernet Plus Plus  RFC 768 UDP  RFC 793 TFTP  RFC 791 IP  RFC 792 ICMP  RFC 2068 HTTP  RFC 1112 IGMP v1  RFC 2236 IGMP v2  RFC 3376 IGMP v3  RFC 2710 MLD v1  RFC 3810 MLD v2</p>
<b>Environment</b>	
<b>Operating</b>	<p>Temperature: 0 ~ 50 degrees C  Relative Humidity: 5 ~ 95% (non-condensing)</p>
<b>Storage</b>	<p>Temperature: -20 ~ 70 degrees C  Relative Humidity: 5 ~ 95% (non-condensing)</p>

### 3.3 PHYSICAL SPECIFICATIONS:

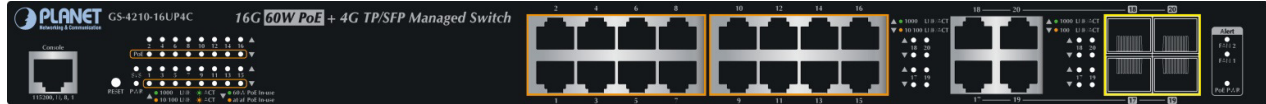
**Dimensions:**

440 x 300 x 44.5 mm (W x D x H), 1U height

**Weight:**

4479g

■ **Front Panel:**

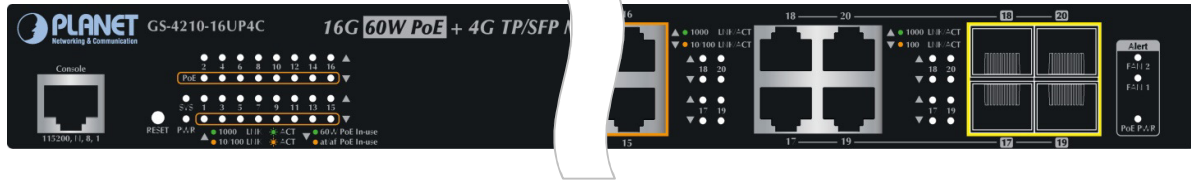


■ **Rear Panel:**



■ **LED Definition**

GS-4210-16UP4C:



■ **System Alert**

LED	Color	Function
PWR	Green	Lights to indicate that the Switch has power.
SYS	Green	Lights to indicate the system is working. Off to indicate the system is booting.
FAN 1	Red	Lights to indicate that FAN1 is down.
FAN 2	Red	Lights to indicate that FAN2 is down.
PoE PWR	Red	Lights to indicate that the PoE power is down.

■ **10/100/1000BASE-T Interfaces (Port-1 to Port-16)**

LED	Color	Function
Ethernet	Green	<b>Lights:</b> To indicate that the port is operating at 1000Mbps. <b>Blinks:</b> To indicate that the switch is actively sending or receiving data over that port.
	Orange	<b>Lights:</b> To indicate that the port is operating at 10/100Mbps. <b>Blinks:</b> To indicate that the switch is actively sending or receiving data over that port.

<b>PoE</b>	<b>Green</b>	<b>Lights:</b> To indicate the port is providing DC in-line power with 802.3bt PoE++ mode. <b>Off:</b> To indicate the connected device is not a PoE powered device (PD)
	<b>Orange</b>	<b>Lights:</b> To indicate the port is providing DC in-line power with end-span/mid-span mode. <b>Off:</b> To indicate the connected device is not a PoE powered device (PD).

■ **10/100/1000BASE-T Interfaces (Port-17 to Port-20)**

LED	Color	Function
<b>1000</b>	<b>Green</b>	<b>Lights:</b> To indicate that the port is operating at 1000Mbps. <b>Blinks:</b> To indicate that the switch is actively sending or receiving data over that port.
<b>10/100</b>	<b>Orange</b>	<b>Lights:</b> To indicate that the port is operating at 10/100Mbps. <b>Blinks:</b> To indicate that the switch is actively sending or receiving data over that port.

■ **100/1000BASE-SX/LX SFP Interfaces (Port-17 to Port-20)**

LED	Color	Function
<b>1000</b>	<b>Green</b>	<b>Lights:</b> To indicate that the port is operating at 1000Mbps. <b>Blinks:</b> To indicate that the switch is actively sending or receiving data over that port.
<b>100</b>	<b>Orange</b>	<b>Lights:</b> To indicate that the port is operating at 100Mbps. <b>Blinks:</b> To indicate that the switch is actively sending or receiving data over that port.

### 3.4 ENVIRONMENTAL SPECIFICATIONS

**Operating:**

**Temperature:** 0°C ~ 50 degrees C  
**Relative Humidity:** 20% ~ 95% (non-condensing)

**Storage:**

**Temperature:** -20°C ~ 70 degrees C  
**Relative Humidity:** 20% ~ 95% (non-condensing)

### 3.5 ELECTRICAL SPECIFICATIONS

Model	<b>GS-4210-16UP4C</b>	
<b>AC Power Input Voltage:</b>	100 ~ 240VAC, 50/60Hz, auto-sensing.	
<b>Power Consumption</b>	110V	<b>20 watts/68 BTU</b>
<b>(System on):</b>	220V	<b>20 watts/68 BTU</b>
<b>Power Consumption</b>	110V	<b>27 watts/92 BTU</b>

<b>(Ethernet Full Load Steady):</b>	220V	<b>26 watts/89 BTU</b>
<b>Power Consumption</b>	110V	<b>740 watts/2539 BTU</b>
<b>(PoE Full Loading):</b>	220V	<b>740 watts/2539 BTU</b>

### 3.6 TEMPERATURE DETECTION SPECIFICATIONS

GS-4210-16UP4C:

Smart Fan Speed Control

PoE Chip Temperature Value	Status
< 42 degrees C	Fan is in low speed
> 48 degrees C	Fan is in high speed

### 3.7 REGULATORY COMPLIANCE

FCC Class A, CE.

### 3.8 RELIABILITY

MTBF > 50,000 hrs @ 25 degrees C

### 3.9 BASIC PACKAGING

- GS-4210-16UP4C Switch x 1
- Quick Installation Guide x 1
- Power Cord x 1
- RS-232 to RJ45 Cable x 1
- SFP Dust Cap x 4
- Two Rack-mounting Brackets with Attachment Screws x 2

### 3.10 PACKING DIMENSIONS

**Dimensions:** 520 (W) x 450 (D) x 90 mm (H)

**Weight:** 5.17 KG (gross weight)

**Quantity:** 2pcs in one carton