

MPN: LPP270

by Logon PATCHPANEL 1U CAT6 UNSHIELDED 24 PORTS - TOOLLESS

Specifications

Type

19" 24-port UTP toolless patch panel

Colour: Black

Krone IDC

Electrical

Contact resistance: 20m ohm

Insulation resistance: ≥ 500 m ohm @ 100V DC

Withstand voltage: DC1000V AC700V RMS 60Hz, 1MIN

CAT6 permanent link: Conform to ANSI/TIA/EIA 568B. 2-10

Environmental

Storage: -40° / $+70^{\circ}$

Operation: -10° / $+60^{\circ}$

Mechanical

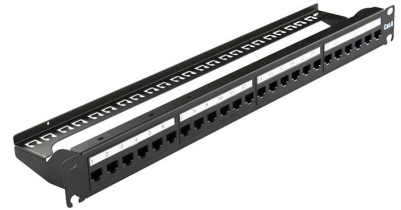
Metal material: Cold rolled plate

IDC material: PC UL94V-0, accept 22-26AWG solid wire

Terminal: Phosphor bronze, tin gold 3U"

RJ45 contact life: 750 times min

IDN life: 250 times min



Specyfikacja

Package dimensions	Gross Weight (Package, kg)	0,65 kg
Product dimensions	Net Weight (Product, kg)	0,65 kg
Vendor information	Brand Name	Lanview

Inne obrazy

